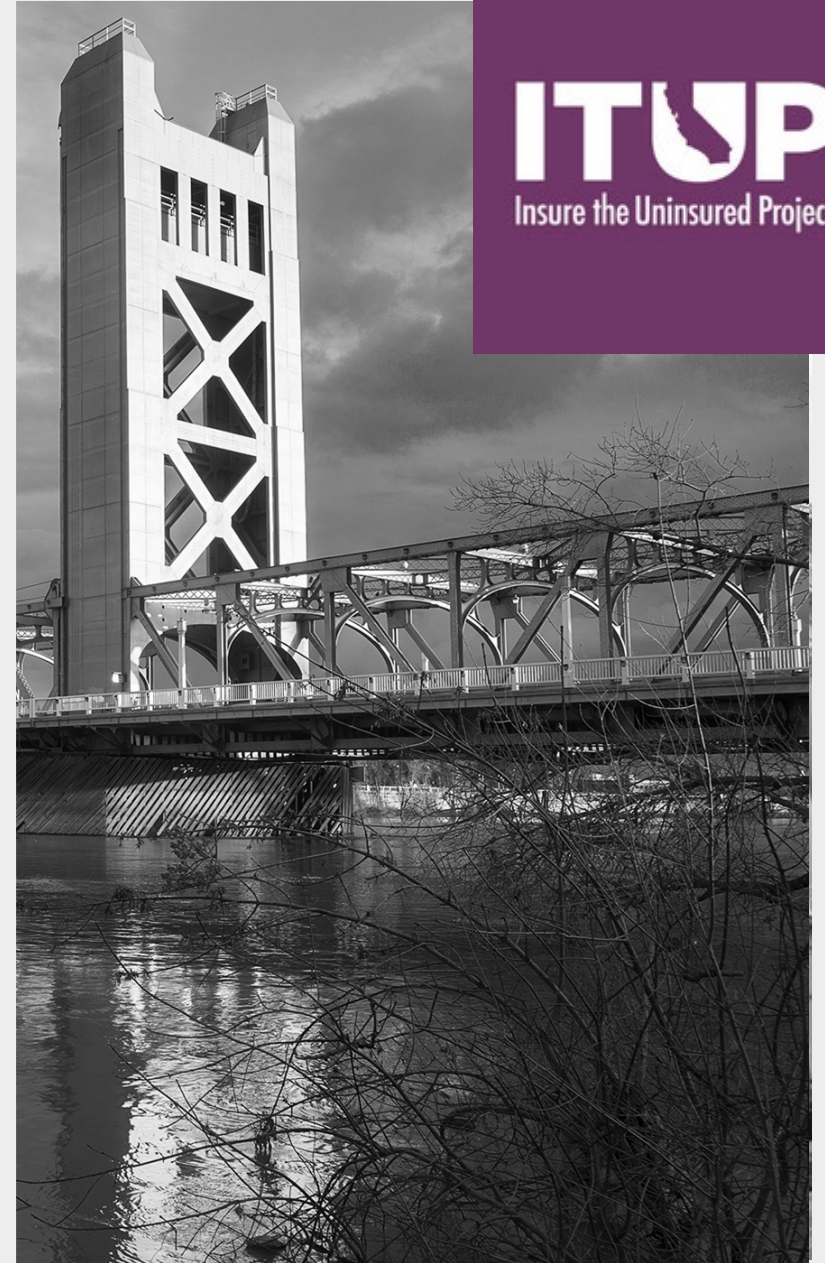


# Confronting Social Forces Driving Incarceration

Thursday, June 26, 2025

1:00 p.m. – 2:00 p.m.



This event is generously sponsored  
by...



**S I E R R A   H E A L T H**  
**F O U N D A T I O N**

# Housekeeping



- **This session is being recorded.** The meeting, links and resources will be emailed to participants and posted to the ITUP website after the meeting.
- **Closed Captioning is available.** To enable captions, select the “CC” or transcript icon from your toolbar.
- **Submit your questions** at any time during today’s webinar using the Q&A function on your screen.
- **Chat is open** and we encourage you to engage throughout today’s discussion.

# Welcomes and Introductions



**Jana Wright, MPH (she/her)**  
Director of Policy,  
Insure the Uninsured Project (ITUP)



# Agenda for Today



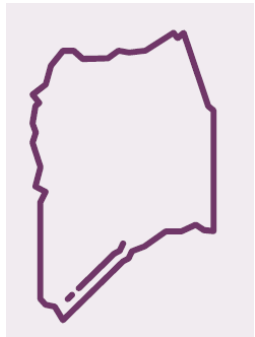
AGENDA*	
1:00 – 1:10 p.m.	<b>Welcome and Introductions</b> <b>Jana Wright, MPH</b> (she/her), Director of Policy, Insure the Uninsured Project (ITUP)
1:10 - 1:55 p.m. <i>Including Q&amp;A</i>	<b>Panel: Breaking the Cycle—Addressing Root Causes, Reentry, and Community Healing</b> <b>Jonathan Freedman, MPSH</b> (he/him), Senior Advisor, Health Management Associates (HMA), and Board Treasurer, ITUP Board of Directors ( <i>moderator</i> ) <b>Tracie Neal</b> (she/her), Chief Probation Officer, Shasta County <b>Sydney Turner</b> (she/her), Director of Public Policy, Medi-Cal, Health Net <b>Dr. John Zweifler, MD, MPH</b> (he/him), Medical Consultant, Fresno County Department of Public Health
1:55 – 2:00 p.m.	<b>Wrap Up</b>

\*Agenda is subject to change.

# Highlights from the JI-Stakeholder Meetings



Shasta County



San Joaquin County



Stanislaus County



## Newly Released:

# Examining Incarceration Drivers and Promising Solutions Across Shasta, San Joaquin, and Stanislaus Counties

### SYSTEMIC GAPS IMPACTING JUSTICE AND RECOVERY



#### Behavioral Health Service Gaps<sup>16, 17</sup>

- Limited Treatment Resources
- Rural Access Barriers
- Inadequate Coordination in Systems



#### Housing Instability and Homelessness<sup>18, 19, 20</sup>

- Insufficient Affordable Housing Options
- Scarce Supportive Housing
- Gaps in Transitional Housing Options



#### Substance Use Disorder Treatment Deficiencies<sup>21</sup>

- Limited Treatment Facilities Capacity
- Insufficient Integration of Services
- Weak Long-Term Recovery Support Systems



#### Systemic Coordination Challenges<sup>22</sup>

- Disconnected Agencies
- Fragmented Delivery Services
- Poor Reentry and Transition Services



#### Workforce Development Limitations<sup>23, 24</sup>

- Inadequate Job Training Programs
- Insufficient Economic Opportunities
- Limited Sustainable Employment Pathways

### Promising Interventions – Disrupting Recidivism

Increasing the reliance of community-based alternatives to incarceration does not lead to higher crime or recidivism rates. However, the following strategies have demonstrated strong effectiveness in achieving public safety goals.

#### • Intensive Supervision with Swift Response<sup>25</sup>

This model keeps individuals in the community under close supervision, using immediate proportionate responses to address violations. California's 'flash incarceration' policy reflects this approach, substituting short jail stays for longer revocations.<sup>26, 27</sup> Unfortunately, counties report that new local charges remain more common than supervision violations or flash incarceration.<sup>28</sup>

#### • Housing First Stabilization Programs

The Housing First approach tackles recidivism by providing immediate, permanent housing without requiring sobriety or treatment compliance.<sup>29</sup> By stabilizing basic needs first, these programs reduce returns to custody and support long-term outcomes. Effective implementation involves collaboration among corrections, housing agencies, and service providers to identify high-risk individuals' pre-release, secure housing, and deliver wraparound support.<sup>30</sup> This model complements intensive supervision by offering stability essential for success, while also reducing costs linked to repeated incarceration and homelessness.<sup>31</sup>

#### • Targeted Services Based on Risk-Need-Responsivity (RNR)

Programs following the RNR framework have proven particularly effective in disrupting recidivism by addressing risk, need, and responsivity factors by<sup>32, 33</sup>:

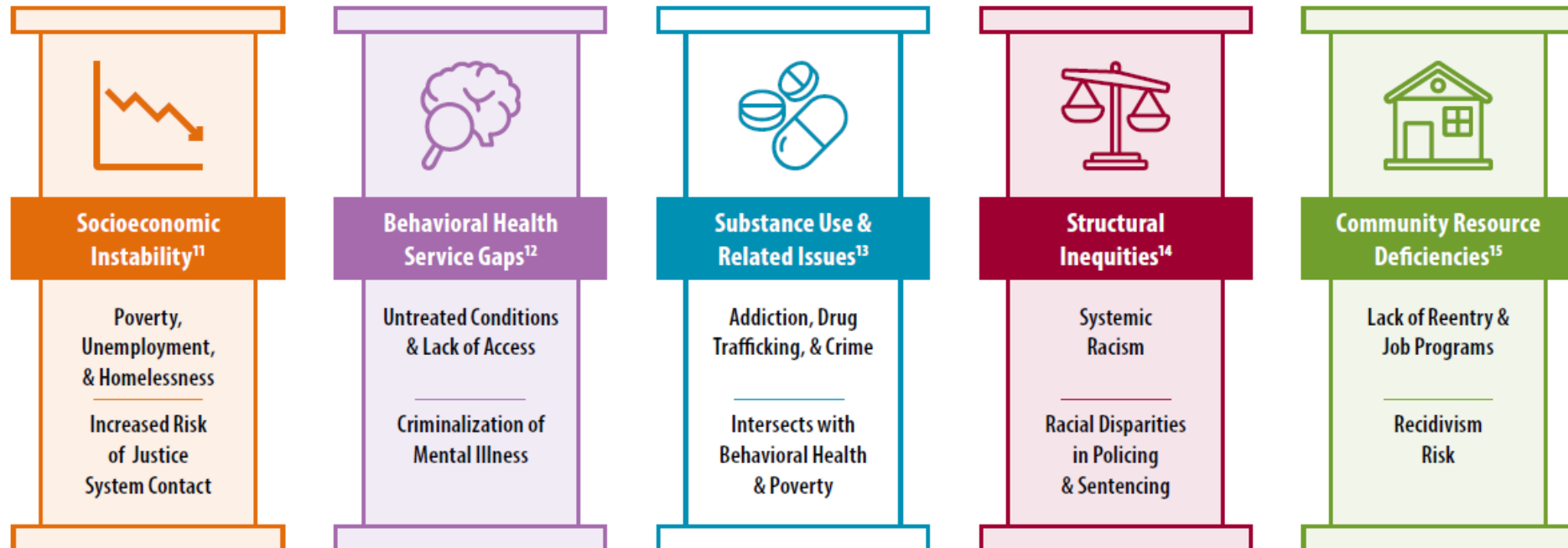
- Implementing risk assessment tools to identify and target high-risk offenders for intervention.
- Tailoring interventions to address specific criminogenic needs contributing to reoffending.
- Customizing approaches to align with offenders' learning styles and motivations for more effective rehabilitation.

When implemented in coordination, these interventions establish a comprehensive policy framework for reducing recidivism. By aligning swift accountability measures with targeted treatment of risk factors for reoffending and stable housing solutions, counties can address the root social determinants of incarceration in a more holistic and effective manner. This integrated approach not only delivers better public safety outcomes, but also proves more fiscally responsible than continued reliance on incarceration. Long-term success depends on sustained cross-sector collaboration among justice systems, health care providers, housing agencies, and community-based organizations (CBOs) committed to the shared goals of rehabilitation and reintegration.



# Examining Incarceration Drivers and Promising Solutions Across Shasta, San Joaquin, and Stanislaus Counties

## 5 PILLARS DRIVING INCARCERATION





# Moderator for Upcoming Panel



**Jonathan Freedman, MPSH (he/him)**  
Senior Advisor & Board Treasurer,  
Health Management Associates (HMA)  
& ITUP Board of Directors



# Breaking the Cycle—Addressing Root Causes, Reentry, and Community Healing



**Tracie Neal (she/her)**  
Chief Probation Officer,  
Shasta County



**Sydney Turner (she/her)**  
Director of Public Policy, Medi-Cal  
Health Net



**Dr. John Zweifler, MD, MPH (he/him)**  
Medical Consultant, Fresno County  
Department of Public Health

This event is generously sponsored  
by...



**S I E R R A   H E A L T H**  
**F O U N D A T I O N**

# Please Participate: BH Older Adults Survey



- **Survey in collaboration with California Department of Aging and sponsored by West Health**
- **Closes July 3rd!**



# Thank You!

## Stay up to Date with ITUP!

Sign up for [ITUP's Weekly Newsletters Here!](#) 



@ITUP



@InsuretheUninsuredProject



@InsuretheUninsuredProject



@InsuretheUninsuredProject



info@itup.org