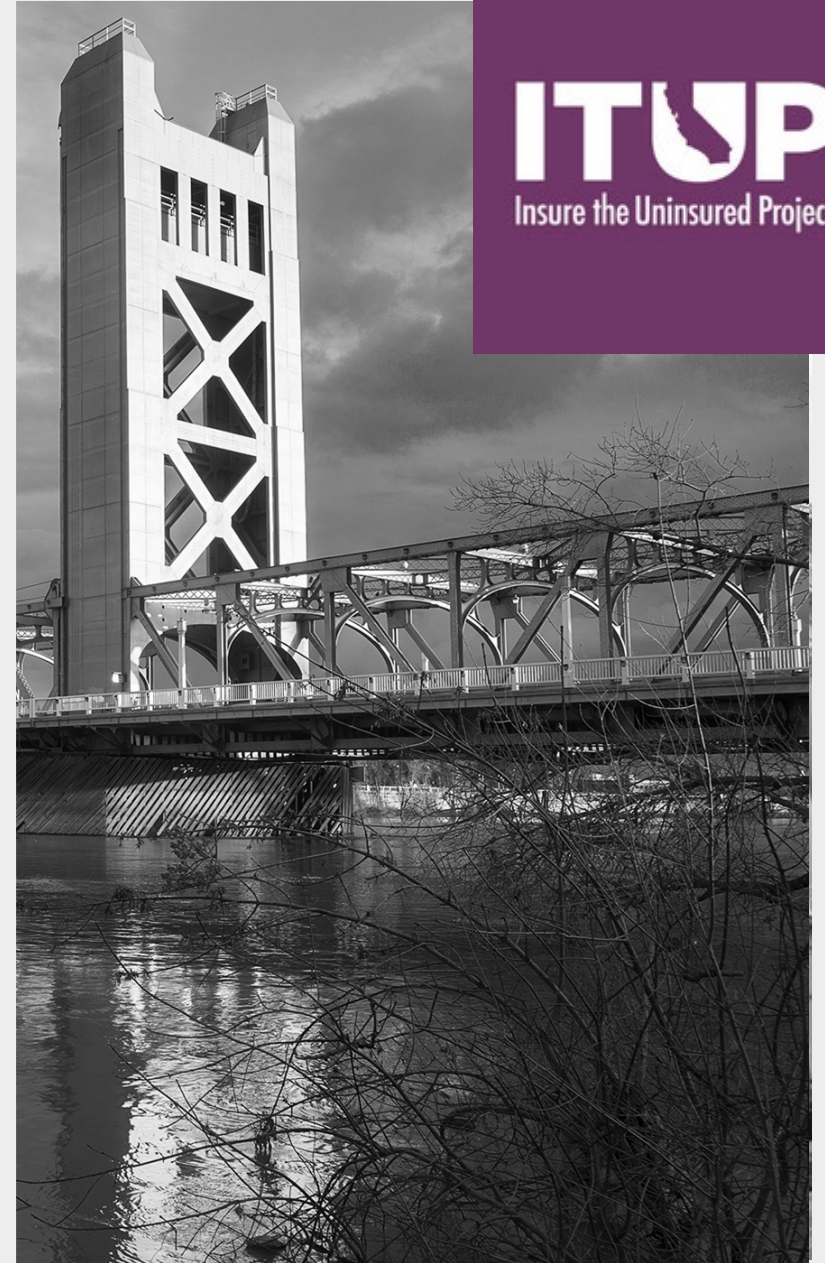


From Crisis to Care: A Policy Forum on Maternal Mental Health

Thursday, May 21, 2025

1:00 p.m. – 2:00 p.m.



This event is generously sponsored
by...



Promise Health Plan

Housekeeping



- **This session is being recorded.** The meeting, links and resources will be emailed to participants and posted to the ITUP website after the meeting.
- **Closed Captioning is available.** To enable captions, select the “CC” or transcript icon from your toolbar.
- **Submit your questions** at any time during today’s webinar using the Q&A function on your screen.
- **Chat is open** and we encourage you to engage throughout today’s discussion.

Welcomes and Introductions



Jana Wright, MPH (she/her)
Director of Policy,
Insure the Uninsured Project (ITUP)

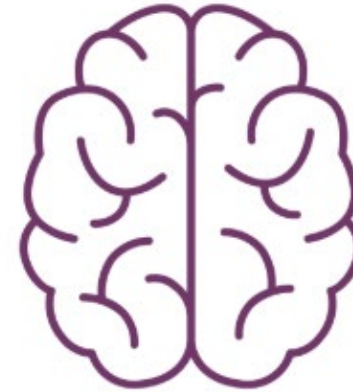
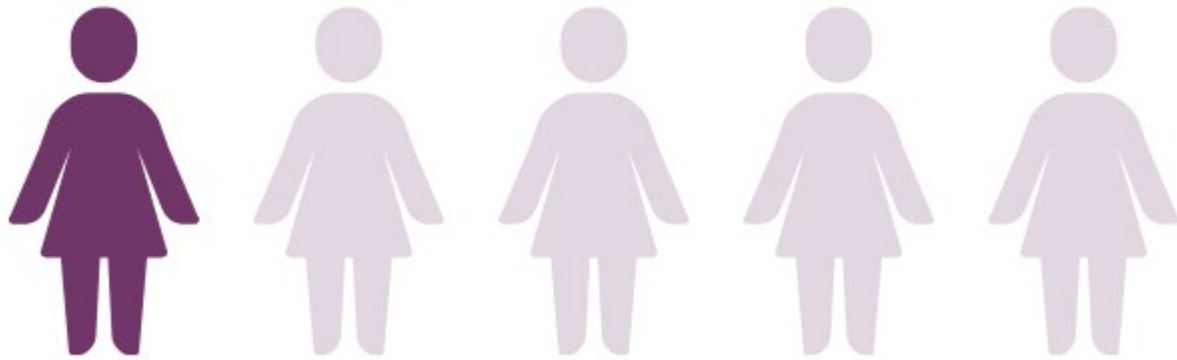


Agenda for Today



AGENDA*	
1:00 – 1:10 p.m.	Welcome and Introductions Jana Wright, MPH (she/her), Director of Policy, Insure the Uninsured Project (ITUP)
1:10 - 1:55 p.m. <i>Including Q&A</i>	Panel: Bridging the Gap—Advancing Maternal Mental Health in Action Rana Suliman, MPH (she/her), Senior Director, Transform Health (<i>moderator</i>) Sherri Callahan, RN , (she/her), Manager, Initial Health Appointment (IHA) & Comprehensive Perinatal Services Program (CPSP) Oversight, Blue Shield Promise Health Plan Dr. Chiana Ghant, DSW, LMSW, MA (she/her), Medical Social Worker, Veterans Health Administration Mia Hemstad (she/her), Communications Director, Maternal Mental Health Leadership Alliance Kelly O'Connor (she/her), Executive Director, Maternal Mental Health NOW
1:55 – 2:00 p.m.	Wrap Up

Setting the Context: Fast-Facts for Maternal Mental Health (MMH)



Accounts for
22%
Pregnancy-Related
Deaths

1 in **5** Mothers are Impacted
by Mental Health Conditions

Mental Health Conditions are a
Leading Cause of Maternal Deaths

Barriers to Accessing Care

- Feelings of shame, stigma, guilt
- Expense and/or lack of access to health care
- Social biases in the health care system
- Logistical challenges (i.e., transportation or childcare)
- Distrust of the health care system
- Fear that child protective services or immigration agencies will become involved
- Fear of being considered a “bad mom”
- Racial, cultural, and religious beliefs

10%

of Fathers Experience
Postpartum Depression



*Women of color and women
of low income are **MORE LIKELY**
to experience maternal mental health conditions and
LESS LIKELY to be able to access care.*

The Cost of Untreated MMH Conditions



*The cost of not treating MMH Conditions is
\$32,000 per mother-infant pair
each year in the U.S.*



Overwhelmed



Negative Thoughts



\$14 Billion

**The Cost of Untreated
Maternal Mental Health Conditions**



Depression



Anxiety

Moderator for Upcoming Panel



Rana Suliman, MPH (she/her/hers)
Senior Director, Transform Health



Bridging the Gap—Advancing Maternal Mental Health in Action



Sherri Callahan, RN (she/her)
Manager,
Initial Health Appointment (IHA)
& Comprehensive Perinatal Services
Program (CPSP) Oversight,
Blue Shield Promise



Dr. Chiana, DSW, LMSW, MA (she/her)
Medical Social Worker,
Veterans Health Administration



Mia Hemstad (she/her)
Communications Director,
Maternal Mental Health
Leadership Alliance



Kelly O'Connor (she/her)
Executive Director,
Maternal Mental Health
NOW

Register For ITUP's Last Policy Forum!



[Register Here!](#)



This event is generously sponsored
by...



Promise Health Plan

Thank You!

Stay up to Date with ITUP!

Sign up for [ITUP's Weekly Newsletters Here!](#)
[Complete the Event Evaluation](#)



@ITUP



@InsuretheUninsuredProject



@InsuretheUninsuredProject



@InsuretheUninsuredProject



info@itup.org