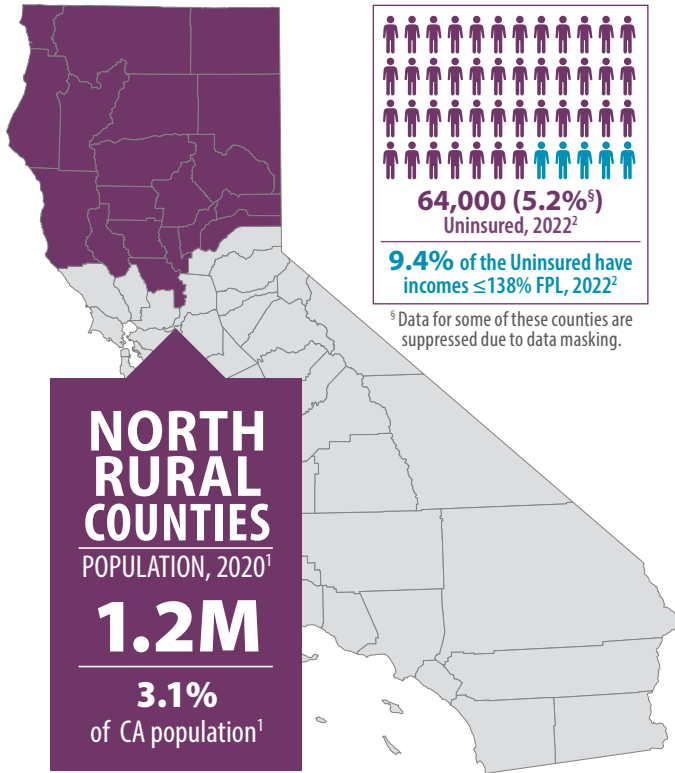


# North Rural Counties

July 2024

BUTTE, COLUSA, DEL NORTE, GLENN, HUMBOLDT, LAKE, LASSEN, MENDOCINO, MODOC, NEVADA, PLUMAS, SHASTA, SIERRA, SISKIYOU, SUTTER, TEHAMA, TRINITY, YUBA



	Population <sup>1</sup>	Uninsured, 2022 <sup>2</sup>	Uninsured, Incomes ≤ 138% Federal Poverty Level (FPL), 2022 <sup>2</sup>
<b>Butte</b>	211,632	10,000 (4.7%)	-
<b>Shasta</b>	182,155	1,000 (0.5%*)	-
<b>Humboldt</b>	136,463	14,000 (10.3%*)	2,000 (1.5%*)
<b>Nevada</b>	102,241	2,000 (2.0%*)	1,000 (1.0%*)
<b>Sutter</b>	99,633	12,000 (12.0%*)	-
<b>Mendocino</b>	91,601	7,000 (7.6%*)	1,000 (1.1%*)
<b>Yuba</b>	81,575	5,000 (6.1%*)	1,000 (1.2%*)
<b>Lake</b>	68,163	3,000 (4.4%*)	1,000 (1.5%*)
<b>Tehama</b>	65,829	6,000 (9.1%*)	-
<b>Glenn<sup>2</sup></b>	28,917	<b>Aggregated Data for Tehama, Glenn, and Colusa Counties</b>	
<b>Colusa<sup>2</sup></b>	21,839		
<b>Siskiyou</b>	44,076	4,000 (9.1%*)	-
<b>Lassen</b>	32,730	<b>Aggregated Data for Siskiyou, Lassen, Del Norte, Plumas, Trinity, Modoc, and Sierra Counties</b>	
<b>Del Norte</b>	27,743		
<b>Plumas</b>	19,790		
<b>Trinity</b>	16,112		
<b>Modoc</b>	8,700		
<b>Sierra</b>	3,236		

(-) Notes a value unavailable due to data masking. | \* Data for this county is considered statistically unstable.

**FIGURE 1. Race/Ethnicity Among the Uninsured, 2022<sup>2</sup>**

Percent by Race	County Population							Insured							Uninsured						
	Latinx	White	Black	AI/AN	Asian	NH/PI	2+	Latinx	White	Black	AI/AN	Asian	NH/PI	2+	Latinx	White	Black	AI/AN	Asian	NH/PI	2+
<b>Butte</b>	16.0%	72.2%	-	-	-	-	6.4%*	74.8%*	98.4%*	-	-	-	-	100.0%*	-	1.6%*	-	-	-	-	-
<b>Shasta</b>	14.3%	80.4%	-	-	1.9%*	-	2.6%*	99.9%*	99.4%*	-	-	100.0%*	-	99.3%*	-	0.6%*	-	-	-	-	-
<b>Humboldt</b>	12.1%*	75.4%*	-	3.8%*	4.4%*	-	4.1%*	72.6%*	95.6%*	-	83.2%*	56.9%*	-	60.1%*	27.4%*	4.4%*	-	-	-	-	39.9%*
<b>Nevada</b>	12.0%	84.6%	-	-	-	-	2.6%*	88.2%*	98.9%*	-	-	-	-	97.9%*	11.8%*	1.1%*	-	-	-	-	-
<b>Sutter</b>	31.4%	47.1%	0.6%*	1.9%*	16.8%*	-	2.1%*	83.3%*	99.1%*	100.0%*	32.5%*	70.7%*	-	100.0%*	16.7%*	-	-	-	-	-	-
<b>Mendocino</b>	27.8%	65.6%	-	2.0%*	2.4%*	-	1.7%*	92.5%*	91.4%*	-	100.0%*	100.0%*	-	66.2%*	7.5%*	8.6%*	-	-	-	-	-
<b>Yuba</b>	26.7%	56.6%	1.5%*	0.6%*	7.5%*	-	5.6%*	83.6%*	98.9%*	87.6%*	-	82.7%*	-	100.0%*	16.4%*	-	-	-	17.3%*	-	-
<b>Lake</b>	22.4%	70.8%	-	0.9%*	2.2%*	-	2.6%*	88.6%*	98.3%*	-	100.0%*	71.8%*	-	96.3%*	11.4%*	1.7%*	-	-	-	-	-
<b>Aggregated Data for Tehama, Glenn, and Colusa Counties</b>																					
	32.4%*	58.4%	-	1.3%*	1.4%*	3.7%*	2.7%*	99.3%*	91.5%*	-	100.0%*	100.0%*	100.0%*	100.0%*	-	8.5%*	-	-	-	-	-
<b>Aggregated Data for Siskiyou, Lassen, Del Norte, Plumas, Trinity, Modoc, and Sierra Counties</b>																					
	4.9%*	77.6%	-	12.1%*	0.6%*	3.6%*	1.2%*	96.4%*	97.2%*	-	98.6%*	100.0%*	-	97.9%*	-	2.8%*	-	-	-	-	-

AI/AN=American Indian/Alaska Native | NH/PI = Native Hawaiian/Pacific Islander | 2+ = Two or More Races | \* Data for these counties are considered statistically unstable.

(-) Notes a value unavailable due to data masking.



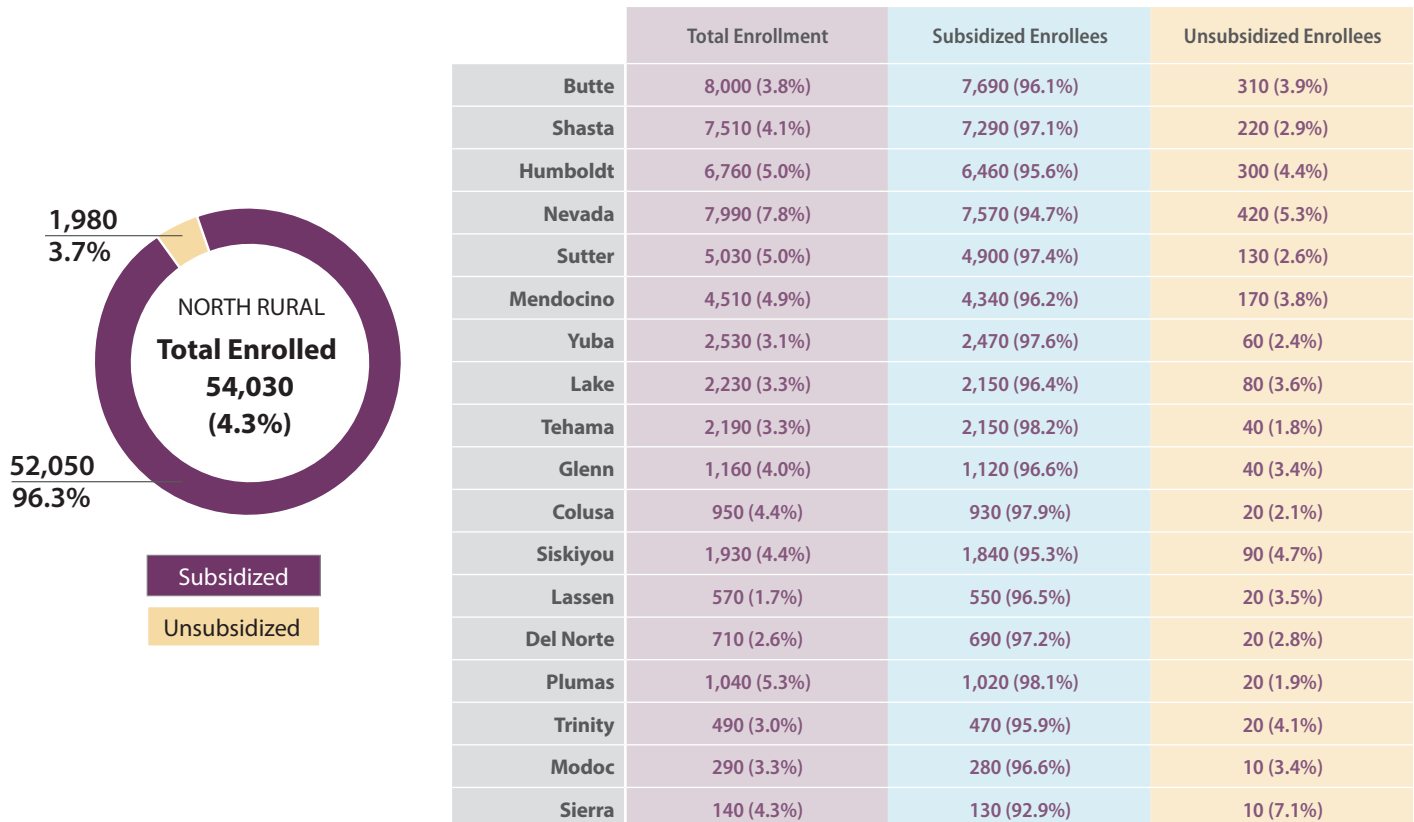
**FIGURE 2. Employer-Sponsored Coverage, 2022<sup>2</sup>**

	Employer-Sponsored Coverage Among North Rural Counties	Race/Ethnicity Breakdown Among North Rural Counties with Employer-Sponsored Coverage						
		Latinx	White	Black	AI/AN	Asian	NH/PI	2+
<b>Butte</b>	97,000 (48.0%)	10.1%	77.3%*	-	-	-	-	7.2%*
<b>Shasta</b>	85,000 (48.1%)	13.4%*	81.9%*	-	-	3.4%*	-	1.0%*
<b>Humboldt</b>	44,000 (33.9%)	13.8%*	76.4%*	-	-	6.8%*	-	2.5%*
<b>Nevada</b>	37,000 (37.7%)	7.3%*	88.0%	-	-	-	-	-
<b>Sutter</b>	39,000 (40.2%)	19.1%*	67.0%*	-	-	12.1%*	-	-
<b>Mendocino</b>	32,000 (37.3%)	24.7%*	71.0%*	-	-	-	-	-
<b>Yuba</b>	39,000 (48.6%)	18.3%*	69.5%*	2.0%*	-	6.6%*	-	3.5%*
<b>Lake</b>	14,000 (21.2%)	7.9%*	85.1%*	-	-	-	-	4.3%*
<b>Aggregated Data for Tehama, Glenn, and Colusa Counties</b>								
	38,000 (33.0%)	30.2%*	65.7%*	-	2.3%*	-	-	-
<b>Aggregated Data for Siskiyou, Lassen, Del Norte, Plumas, Trinity, Modoc, and Sierra Counties</b>								
	35,000 (26.3%)	8.7%*	84.3%*	-	4.5%*	1.4%*	-	-

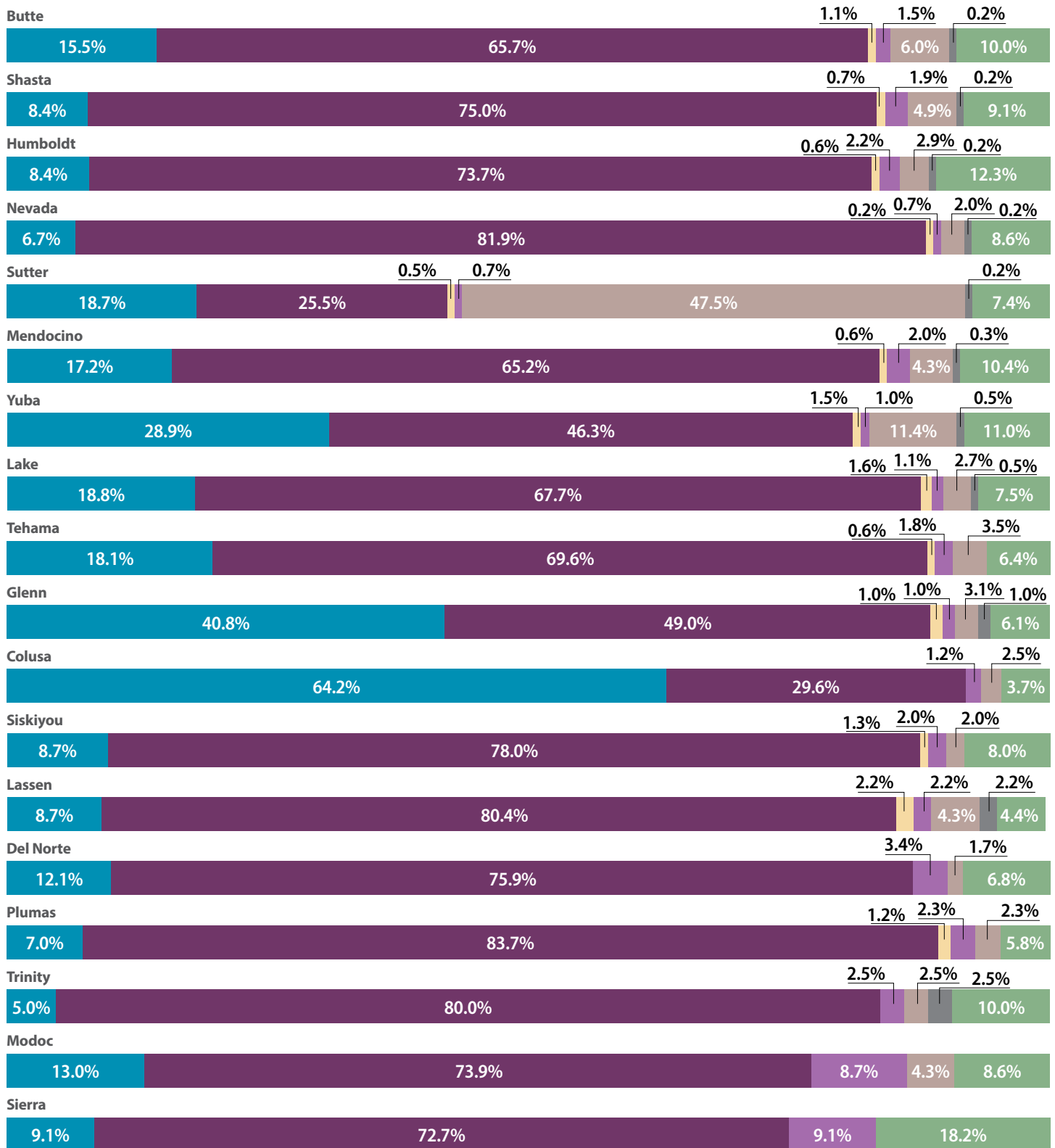
AI/AN=American Indian/Alaska Native | NH/PI = Native Hawaiian/Pacific Islander | 2+ = Two or More Races | \* Data for these counties are considered statistically unstable.  
(-) Notes a value unavailable due to data masking.

## COVERED CALIFORNIA

**FIGURE 3. Percent of Counties' Populations Enrolled in Covered California, December 2023<sup>3</sup>**



Covered California's privacy policy rounds all figures to the nearest 10. As a result, grand totals shown may be more than 100 percent.

**FIGURE 4. Covered California Enrollment by Race/Ethnicity, December 2023<sup>3</sup>**

■ Latinx ■ White ■ Black ■ American Indian/Alaska Native ■ Asian ■ Native Hawaiian/Pacific Islander ■ Multiple Races or Other

There is no data available for the Asian, Native Hawaiian/Pacific Islander, and Black categories in some North Rural counties.



**FIGURE 5. Covered California Enrollment by FPL, December 2023<sup>3</sup>**

	Under 138% FPL	Between 138% and 400% FPL	Between 400% and 600% FPL	Over 600% FPL
<b>Butte</b>	2.4%	81.4%	9.5%	4.9%
<b>Shasta</b>	2.7%	80.6%	10.8%	4.4%
<b>Humboldt</b>	3.8%	79.5%	9.9%	4.6%
<b>Nevada</b>	2.4%	72.1%	13.9%	8.5%
<b>Sutter</b>	3.2%	85.4%	7.4%	2.8%
<b>Mendocino</b>	4.2%	77.4%	10.4%	6.0%
<b>Yuba</b>	4.7%	85.4%	7.1%	2.0%
<b>Lake</b>	4.5%	81.1%	8.5%	3.6%
<b>Tehama</b>	3.2%	81.7%	11.0%	3.2%
<b>Glenn</b>	3.4%	84.5%	8.6%	2.6%
<b>Colusa</b>	4.2%	83.2%	7.4%	4.2%
<b>Siskiyou</b>	3.6%	76.7%	11.9%	5.2%
<b>Lassen</b>	3.5%	82.5%	7.0%	5.3%
<b>Del Norte</b>	4.2%	80.3%	9.9%	2.8%
<b>Plumas</b>	2.9%	77.9%	11.5%	7.7%
<b>Trinity</b>	2.0%	81.6%	12.2%	2.0%
<b>Modoc</b>	3.4%	86.1%	6.9%	3.4%
<b>Sierra</b>	7.1%	71.4%	7.1%	7.1%

Enrollments where the FPL of the member is not known are not included here. Covered California's data privacy policy rounds all figures to the nearest 10. As a result, grand totals shown may be more than 100%.

**FIGURE 6. Covered California Enrollment by Health Plan, December 2023<sup>3</sup>**

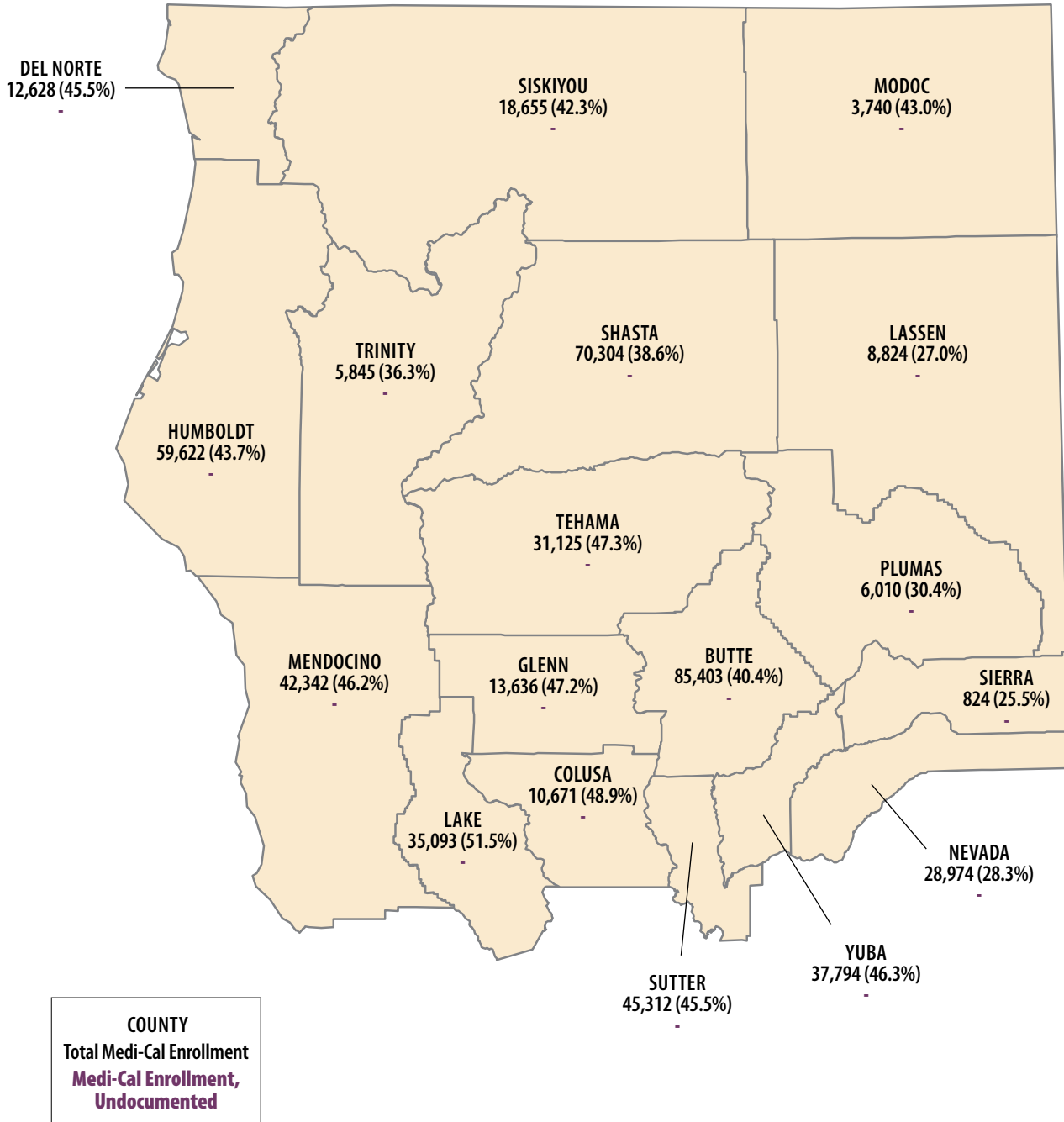
	Aetna Health CVS	Anthem Blue Cross	Blue Shield	Health Net	Kaiser Permanente	LA Care Health Plan	Molina Healthcare	Oscar Health Plan	Valley Health Plan	Western Advantage
<b>Butte</b>	-	3,710	4,250	10	30	10	10	10	10	10
<b>Shasta</b>	-	3,770	3,730	10	10	-	-	10	-	10
<b>Humboldt</b>	-	2,990	3,750	10	10	10	10	10	-	-
<b>Nevada</b>	10	2,860	5,040	10	70	10	-	-	-	10
<b>Sutter</b>	-	2,480	2,450	-	110	-	-	-	-	10
<b>Mendocino</b>	-	1,770	2,710	-	30	10	-	-	10	10
<b>Yuba</b>	10	840	910	-	770	-	-	-	-	10
<b>Lake</b>	-	990	1,220	-	10	-	-	10	-	10
<b>Tehama</b>	-	1,090	1,100	-	10	-	-	-	-	-
<b>Glenn</b>	-	620	540	-	10	-	-	-	-	-
<b>Colusa</b>	-	430	520	-	10	-	-	-	-	-
<b>Siskiyou</b>	-	1,030	880	-	10	10	-	-	-	10
<b>Lassen</b>	-	390	180	-	-	-	-	-	-	-
<b>Del Norte</b>	-	350	360	-	10	-	-	-	-	-
<b>Plumas</b>	-	580	460	-	10	-	-	-	-	-
<b>Trinity</b>	-	240	250	-	10	-	-	-	-	-
<b>Modoc</b>	-	140	150	-	10	-	-	-	-	-
<b>Sierra</b>	-	70	60	-	-	-	-	-	-	-

Covered California's privacy policy rounds all figures to the nearest 10. As a result, grand totals shown may be slightly different from the totals in the individual plan data.



## MEDI-CAL

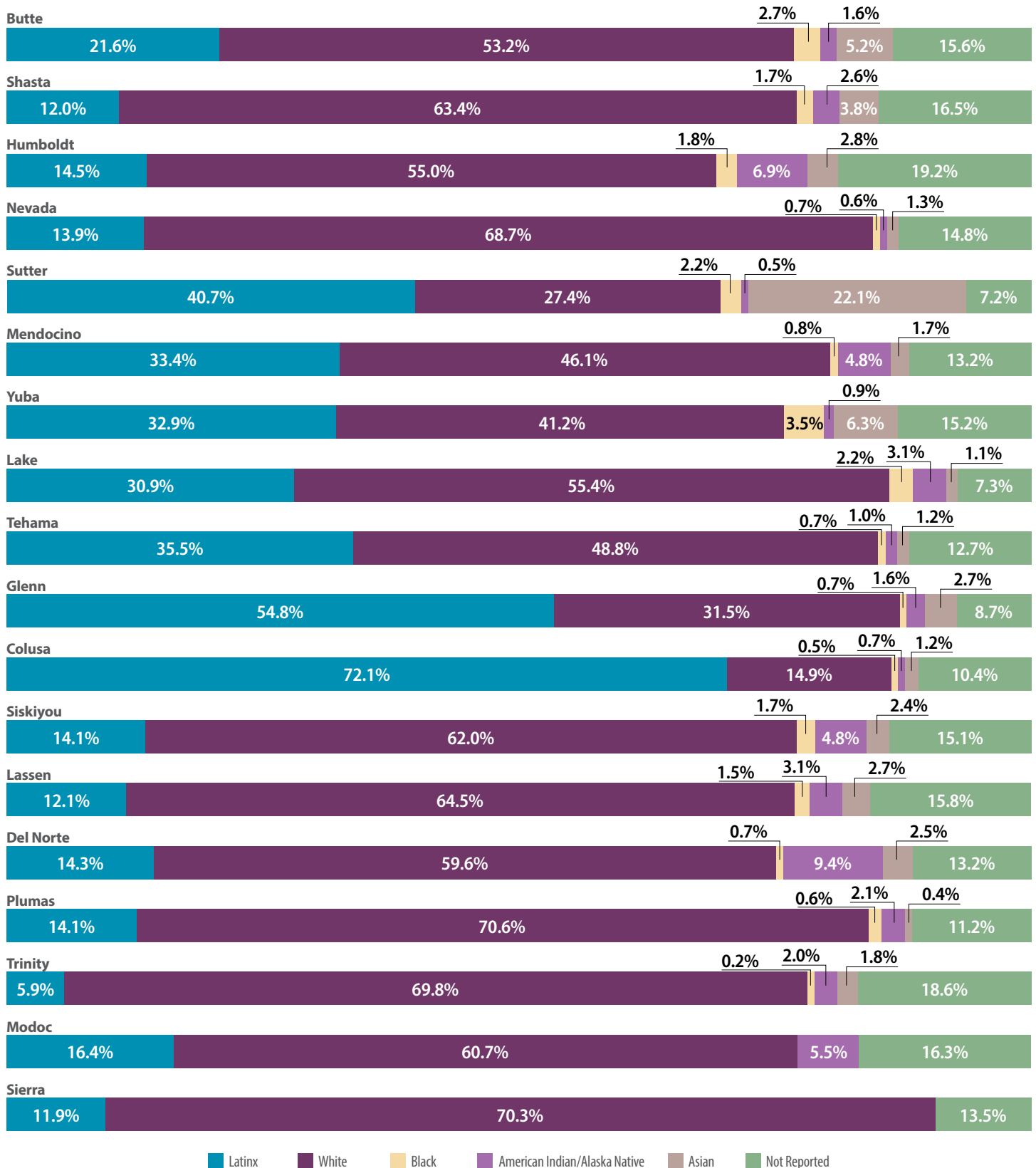
FIGURE 7. Medi-Cal Enrollment, April 2024<sup>4,5</sup>



(-) Notes a value unavailable due to data masking.



Total Medi-Cal Coverage  
in the Rural North Counties  
516,802 (41.6%)

**FIGURE 8. Medi-Cal Enrollment by Race/Ethnicity, April 2024<sup>6</sup>**Data for some race/ethnicity categories are not available in **Modoc** and **Sierra** counties.



**FIGURE 9. Medi-Cal Enrollment in Managed Care and Fee-For-Service (FFS), April 2024<sup>7</sup>**

	MCP Enrollment	Partnership Health Plan	Kaiser Permanente	Medi-Cal FFS Enrollment
<b>Butte</b>	85,659	85,659		-
<b>Shasta</b>	69,710	69,710		594
<b>Humboldt</b>	59,240	59,240		382
<b>Nevada</b>	28,537	28,537		437
<b>Sutter</b>	43,906	43,906		1,406
<b>Mendocino</b>	41,483	41,483		859
<b>Yuba</b>	36,845	36,309	536	949
<b>Lake</b>	34,849	34,849		244
<b>Tehama</b>	30,966	30,966		159
<b>Glenn</b>	13,796	13,796		-
<b>Colusa</b>	10,405	10,405		266
<b>Siskiyou</b>	18,185	18,185		470
<b>Lassen</b>	8,643	8,643		181
<b>Del Norte</b>	12,459	12,459		169
<b>Plumas</b>	5,946	5,946		64
<b>Trinity</b>	5,624	5,624		221
<b>Modoc</b>	3,986	3,986		-
<b>Sierra</b>	872	872		-

□ = Health Plan does not operate in this county | (-) Notes a value unavailable due to data masking.



**FIGURE 10. Community Supports Elections by Managed Care Plans, June 2024<sup>8</sup>**

COMMUNITY SUPPORTS			
	Housing Transition Navigation Services		Nursing Facility Transition/ Diversion to Assisted Living Facilities
	Housing Deposits		Community Transition Services/ Nursing Facility Transition to a Home
	Housing Tenancy and Sustaining Services		Personal Care and Homemaker Services
	Short-Term Post-Hospitalization Housing		Environmental Accessibility Adaptations (Home Modifications)
	Recuperative Care (Medical Respite)		Medically-Supportive Food/ Medically Tailored Meals
	Respite Services		Sobering Centers
	Day Habilitation Programs		Asthma Remediation

	Partnership Health Plan	Kaiser Permanente
Butte	9	
Shasta	8	
Humboldt	8	
Nevada	8	
Sutter	9	13
Mendocino	8	
Yuba	9	14
Lake	8	
Tehama	9	
Glenn	9	
Colusa	9	
Siskiyou	8	
Lassen	8	
Del Norte	8	
Plumas	8	
Trinity	8	
Modoc	8	
Sierra	8	

\*Some Community Supports may not be available to all members or in all areas of the county.





**FIGURE 11. Community Supports in Calendar Year 2022<sup>9</sup>**

**TOTAL  
NORTH RURAL COUNTIES  
MANAGED CARE PLAN (MCP)  
MEMBERS\***

**472,252**

\* Total MCP Members Enrolled in Average Month

\*\* Number of Community Supports Offered by One or More MCPs

§ Total Number of Community Supports Provided to MCP Members

§§ Number of Community Supports Received per 10,000 MCP Members

# Notes a number under 11 or a number that one can reasonably use to deduce a number under 11.

	Total MCP Members	Number of Services Available**	Number of Services Provided <sup>§</sup>	Utilization Rate <sup>§§</sup>
Butte	71,787	7	12	2
Shasta	69,319	6	212	31
Humboldt	60,132	6	#	#
Nevada	24,075	10	42	17
Sutter	37,841	8	12	3
Mendocino	40,439	6	16	4
Yuba	31,334	8	19	6
Lake	34,307	6	#	#
Tehama	25,461	8	#	#
Glenn	11,998	9	0	0
Colusa	9,379	9	#	#
Siskiyou	19,178	6	#	#
Lassen	8,667	6	0	0
Del Norte	12,453	6	#	#
Plumas	5,712	8	0	0
Trinity	5,528	6	#	#
Modoc	3,998	6	0	0
Sierra	644	8	0	0

## MEDICARE

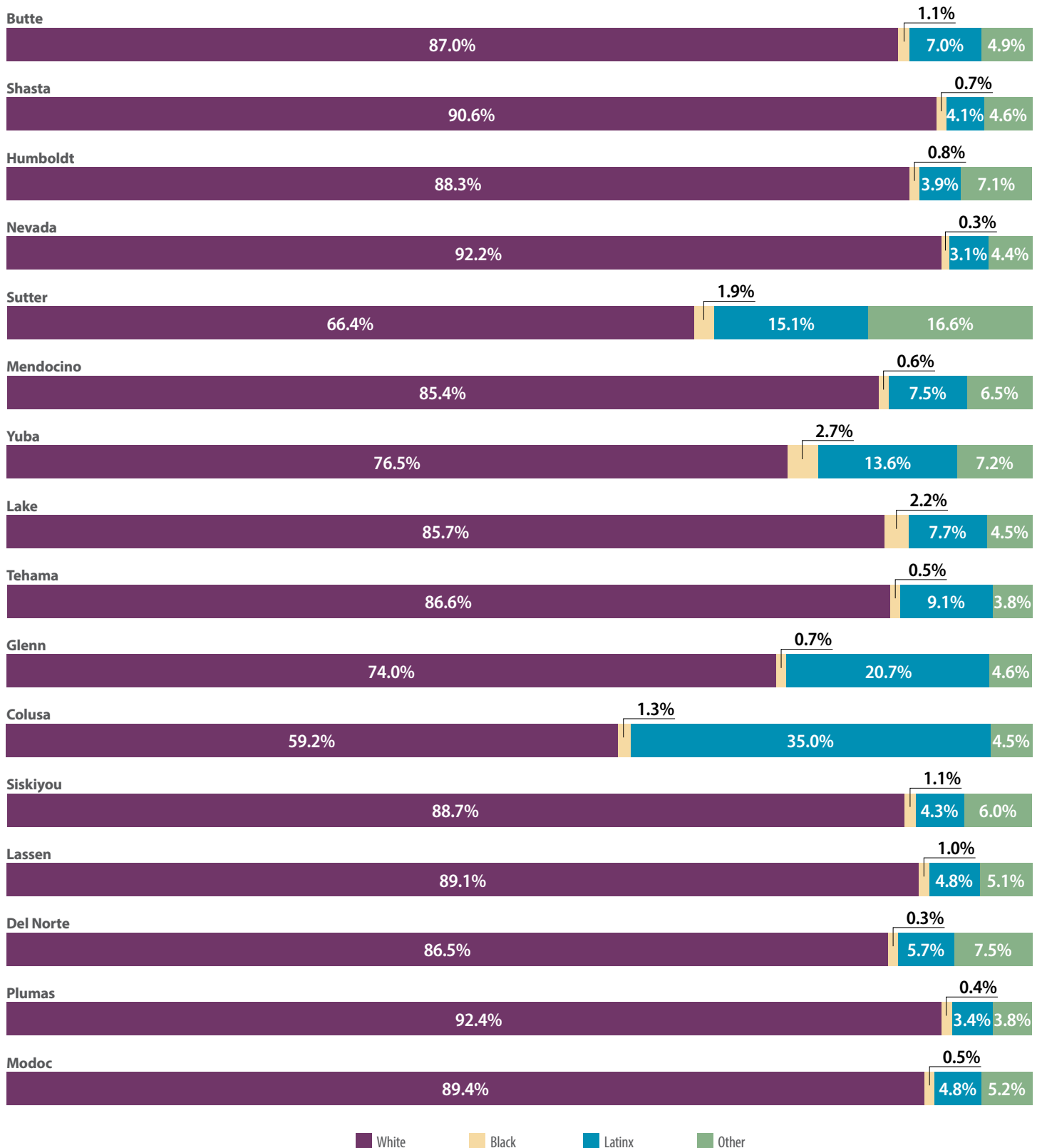
**FIGURE 12. Medicare Enrollment and Percent of Counties' Population, 2021<sup>4,9</sup>**

**Total Medicare  
Enrollment  
Among  
North Rural  
Counties**

**276,618**  
**22.3%**

	Medicare	Medicare Advantage	FFS	Dual Eligible** (April 2024) <sup>5</sup>
Butte	43,739 (20.7%)	5,193 (11.9%)	38,546 (88.1%)	11,566 (26.4%)
Shasta	46,081 (25.3%)	4,813 (10.4%)	41,268 (89.6%)	10,835 (23.5%)
Humboldt	28,601 (21.0%)	1,538 (5.4%)	27,063 (94.6%)	7,443 (26.0%)
Nevada	29,013 (28.4%)	6,139 (21.2%)	22,874 (78.8%)	3,754 (12.9%)
Sutter	16,799 (16.9%)	1,966 (11.7%)	14,833 (88.3%)	5,283 (31.4%)
Mendocino	22,431 (24.5%)	2,833 (12.6%)	19,598 (87.4%)	5,352 (23.9%)
Yuba	12,315 (15.1%)	2,532 (20.6%)	9,783 (79.4%)	4,238 (34.4%)
Lake	16,424 (24.1%)	2,118 (12.9%)	14,306 (87.1%)	5,507 (33.5%)
Tehama	14,651 (22.3%)	1,935 (13.2%)	12,716 (86.8%)	3,973 (27.1%)
Glenn	5,566 (19.2%)	315 (5.7%)	5,251 (94.3%)	1,683 (30.2%)
Colusa	3,682 (16.9%)	302 (8.2%)	3,380 (91.8%)	1,204 (32.7%)
Siskiyou	13,205 (30.0%)	489 (3.7%)	12,716 (96.3%)	3,249 (24.6%)
Lassen	4,976 (15.2%)	212 (4.3%)	4,764 (95.7%)	1,230 (24.7%)
Del Norte	6,206 (22.4%)	248 (4.0%)	5,958 (96.0%)	1,908 (30.7%)
Plumas	6,179 (31.2%)	431 (7.0%)	5,748 (93.0%)	989 (16.0%)
Trinity	3,405 (21.1%)	143 (4.2%)	3,262 (95.8%)	888 (26.1%)
Modoc	2,496 (28.7%)	90 (3.6%)	2,406 (96.4%)	675 (27.0%)
Sierra	849 (26.2%)	45 (5.3%)	804 (94.7%)	183 (21.6%)

\*\*Dual Eligibles are those eligible for Medicare and Medi-Cal, also referred to as Medi Medis.

**FIGURE 13. Medicare Enrollment by Race/Ethnicity, 2021<sup>8</sup>**

This dataset suppresses data that is less than 11. For this reason, **Trinity** and **Sierra** are excluded from this figure.



## NOTES

All decimals rounded to nearest tenth.

1. United States Census Bureau, [2020 Census Redistricting Data](#), Accessed: April 12, 2024.
2. UCLA Center for Health Policy Research, [2022 California Health Interview Survey](#), Public Use File, Accessed: April 12, 2024.
3. Covered California, December 2023, [Active Member Profile](#), Accessed: April 12, 2024.
4. Department of Health Care Services, [Medi-Cal Certified Eligibles Data Table by County and Dual Status](#), April 2024, Accessed: June 12, 2024.
5. Department of Health Care Services, [Medi-Cal Certified Eligibles Data Table by County and Aid Code Group](#), April 2024, Accessed: June 12, 2024.
6. Department of Health Care Services, [Medi-Cal Certified Eligibles Data Table Race/Ethnicity and Age](#), April 2024, Accessed: June 12, 2024.
7. Department of Health Care Services, [Medi-Cal Managed Care Enrollment Report](#), April 2024, Accessed: June 12, 2024.
8. Department of Health Care Services, [CalAIM Community Supports – Managed Care Plan Elections](#), June 2024, Accessed: June 12, 2024.
9. Department of Health Care Services, [County-Level Data Summary for Community Supports in CY 2022](#), Accessed: April 12, 2024.
10. Centers for Medicare and Medicaid Services, [Medicare Geographic Variation – by National, State & County](#), 2021, Public Use File, Accessed: April 12, 2024.

Each year ITUP releases Regional Health Coverage fact sheets for its 10 ITUP Regional Equity Collaborative locations (formerly ITUP Regional Workgroups). These publications are overviews highlighting key coverage facts across all coverage types county-by-county.

## About ITUP

ITUP is an independent, nonprofit, health policy institute that has been a central voice in the California health landscape for more than two decades. ITUP serves as a trusted expert, grounded in statewide and regional connections with a network of policymakers, health care leaders, and stakeholders. The mission of ITUP is to promote innovative and workable policy solutions that expand health care access and improve the health of all Californians.

ITUP is generously supported by the following funders:

- California Health Care Foundation
- The California Endowment
- The California Wellness Foundation



@ITUP



@InsuretheUninsuredProject



@InsuretheUninsuredProject



www.ITUP.org