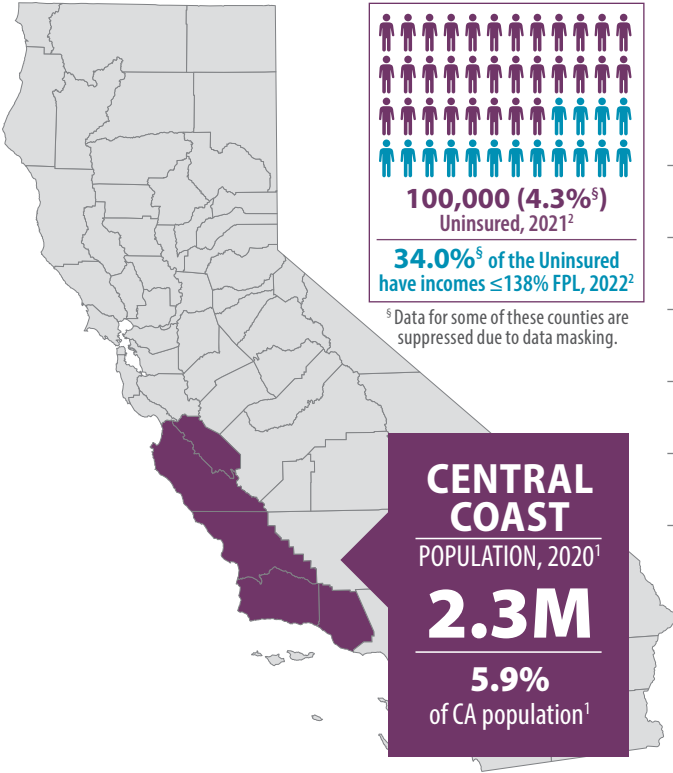


Central Coast Counties

July 2024

MONTEREY, SAN BENITO, SAN LUIS OBISPO, SANTA BARBARA, SANTA CRUZ, VENTURA



	Population ¹	Uninsured, 2022 ²	Uninsured, Incomes ≤ 138% Federal Poverty Level (FPL), 2022 ²
Ventura	843,843	44,000 (5.2%*)	16,000 (1.9%*)
Santa Barbara	448,229	21,000 (4.7%*)	-
Monterey	439,035	33,000 (7.5%)	18,000 (4.1%*)
San Luis Obispo	282,424	-	-
Santa Cruz	270,861	-	-
San Benito	64,209	2,000 (3.1%*)	-

* Data for these counties are considered statistically unstable. | (-) Notes a value unavailable due to data masking.

FIGURE 1. Race/Ethnicity Among the Uninsured, 2022²

Percent by Race	County Population							Insured							Uninsured							
	Latinx	White	Black	AI/AN	Asian	NH/PI	2+	Latinx	White	Black	AI/AN	Asian	NH/PI	2+	Latinx	White	Black	AI/AN	Asian	NH/PI	2+	
Ventura	43.4%	45.6%	2.6%*	-	7.0%	-	1.5%*	90.5%*	100.0%*	69.1%*	-	92.7%*	-	100.0%*	9.5%*	-	-	-	-	-	-	-
Santa Barbara	48.0%	44.4%	0.5%*	-	4.9%*	-	2.2%*	92.6%*	96.6%*	100.0%*	-	100.0%*	-	100.0%*	7.4%*	3.4%*	-	-	-	-	-	-
Monterey	59.6%	30.0%	3.0%*	-	2.9%*	-	3.9%*	88.4%	97.4%*	100.0%*	-	92.9%*	-	98.5%*	11.6%	2.6%*	-	-	-	-	-	-
San Luis Obispo	18.4%	70.8%	-	1.3%*	6.9%	-	2.6%*	100.0%*	98.1%*	-	100.0%*	100.0%*	-	100.0%*	-	-	-	-	-	-	-	-
Santa Cruz	36.9%*	56.8%*	1.5%*	-	2.3%*	-	2.5%*	100.0%*	98.3%*	100.0%*	-	100.0%*	-	92.8%*	-	-	-	-	-	-	-	-
San Benito	57.4%	36.9%	-	-	2.4%*	-	1.4%*	97.4%*	98.6%*	-	-	87.6%*	-	96.6%*	2.6%*	-	-	-	-	-	-	-

AI/AN=American Indian/Alaska Native | NH/PI = Native Hawaiian/Pacific Islander | 2+ = Two or More Races | * Data for these counties are considered statistically unstable. (-) Notes a value unavailable due to data masking.



FIGURE 2. Employer-Sponsored Coverage, 2022²



Total Employer-Sponsored Coverage in the Central Coast
1,133,000 (48.2%)

	Employer-Sponsored Coverage Among Central Coast Counties	Race/Ethnicity Breakdown Among Central Coast Counties with Employer-Sponsored Coverage						
		Latinx	White	Black	AI/AN	Asian	NH/PI	2+
Ventura	413,000 (50.5%)	33.4%	51.5%	-	-	11.5%	-	2.7%*
Santa Barbara	199,000 (46.9%)	45.7%	48.2%	-	-	2.7%*	-	3.2%*
Monterey	190,000 (46.3%)	49.3%	38.6%	5.0%*	-	3.1%*	-	3.9%*
San Luis Obispo	128,000 (49.1%)	19.5%	77.2%	-	-	1.1%*	-	2.1%*
Santa Cruz	166,000 (65.4%)	38.0%*	56.8%*	-	-	3.3%*	-	1.9%*
San Benito	37,000 (57.1%)	52.1%	42.8%	-	-	2.5%*	-	1.8%*

AI/AN=American Indian/Alaska Native | NH/PI = Native Hawaiian/Pacific Islander | 2+ = Two or More Races | * Data for these counties are considered statistically unstable. (-) Notes a value unavailable due to data masking.

COVERED CALIFORNIA

FIGURE 3. Percent of Counties’ Populations Enrolled in Covered California, December 2023³

	Total Enrollment	Subsidized Enrollees	Unsubsidized Enrollees
Ventura	43,240 (5.1%)	40,170 (92.9%)	3,070 (7.1%)
Santa Barbara	18,970 (4.2%)	17,220 (90.8%)	1,750 (9.2%)
Monterey	13,060 (3.0%)	12,190 (93.3%)	870 (6.7%)
San Luis Obispo	15,010 (5.3%)	14,000 (93.3%)	1,010 (6.7%)
Santa Cruz	12,350 (4.6%)	11,200 (90.7%)	1,150 (9.3%)
San Benito	2,130 (3.3%)	2,050 (96.2%)	80 (3.8%)

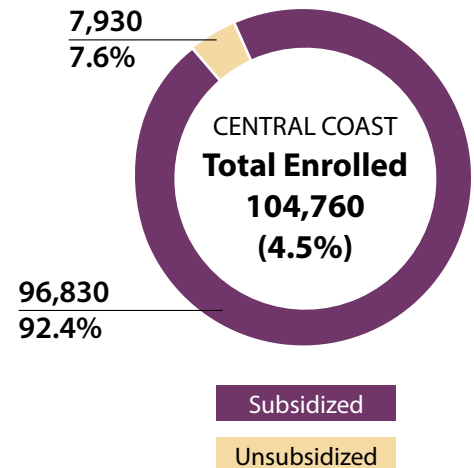




FIGURE 4. Covered California Enrollment by Race/Ethnicity, December 2023³

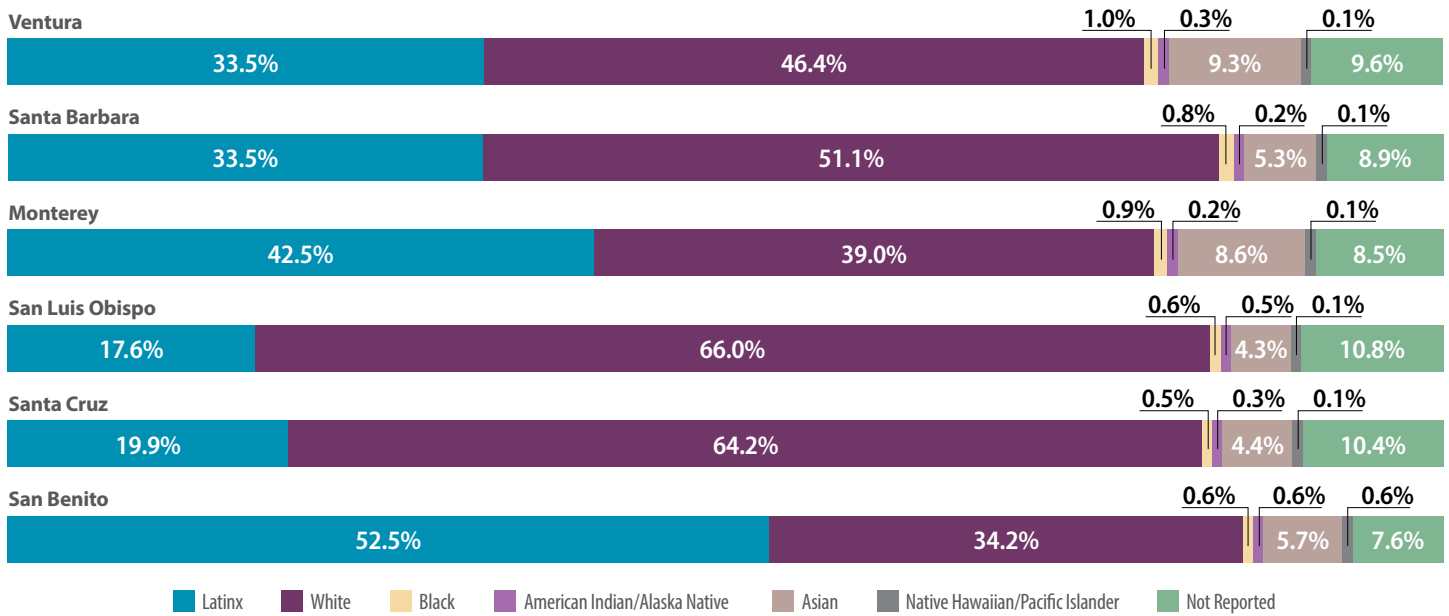


FIGURE 5. Covered California Enrollment by FPL, December 2023³

	Under 138% FPL	Between 138% and 400% FPL	Between 400% and 600% FPL	Over 600% FPL
Ventura	2.6%	77.9%	10.4%	5.3%
Santa Barbara	3.7%	70.7%	12.4%	7.9%
Monterey	3.4%	76.2%	11.3%	5.7%
San Luis Obispo	3.4%	74.1%	12.3%	7.0%
Santa Cruz	3.3%	69.3%	14.2%	8.3%
San Benito	2.3%	78.9%	12.2%	4.7%

Enrollments where the FPL of the member is not known are not included.

FIGURE 6. Covered California Enrollment by Health Plan, December 2023³

	Aetna Health CVS	Anthem Blue Cross	Health Net	Kaiser Permanente	Blue Shield	Western Health Advantage	LA Care Health Plan	Oscar Health Plan	Valley Health Plan	Sharp Health Plan	Molina Healthcare
Ventura	-	480	20	12,010	30,640	-	50	50	-	-	10
Santa Barbara	10	760	10	60	18,130	-	10	10	-	10	10
Monterey	-	490	10	70	10,180	-	10	-	2,310	-	-
San Luis Obispo	10	320	10	40	14,640	-	10	10	10	-	10
Santa Cruz	-	200	10	7,540	4,590	10	10	10	10	10	10
San Benito	-	240	-	50	1,250	-	10	-	590	-	-

Covered California's privacy policy rounds all figures to the nearest 10. As a result, grand totals shown may be slightly different from the totals in the individual plan data. (-) Notes plans that do not participate in the county.



MEDI-CAL

FIGURE 7. Medi-Cal Enrollment, January 2024^{4,5}

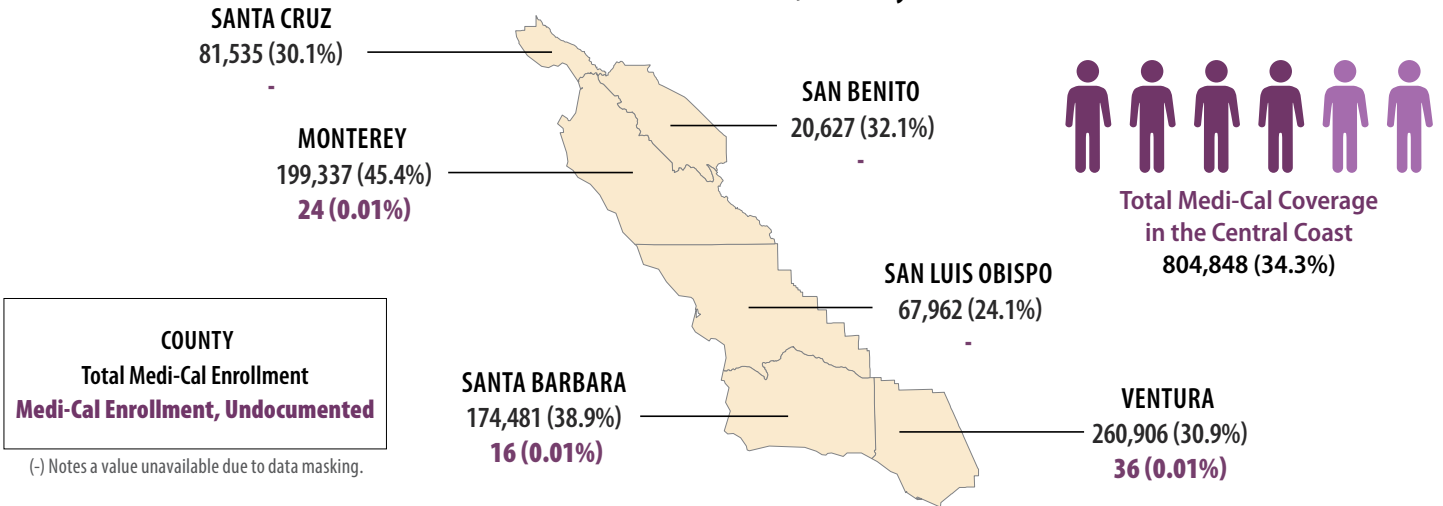


FIGURE 8. Medi-Cal Enrollment by Race/Ethnicity, January 2024⁶

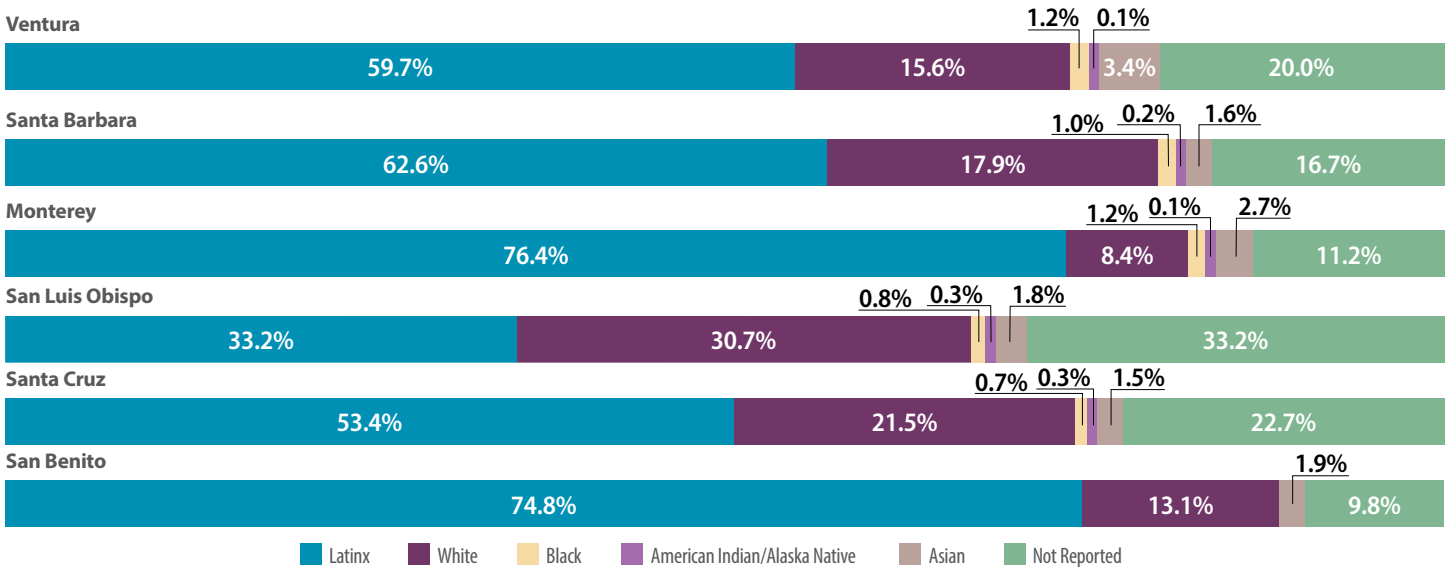


FIGURE 9. Medi-Cal Enrollment in Managed Care and Fee-For-Service (FFS), February 2024⁷

	MCP Enrollment	Gold Coast Health Plan	Kaiser Permanente	CenCal Health	Central California Alliance for Health	Medi-Cal FFS Enrollment
Ventura	257,424	250,305	7,119			3,482
Santa Barbara	172,809			172,809		1,672
Monterey	197,916				197,916	1,421
San Luis Obispo	68,295			68,295		-
Santa Cruz	80,126		117		80,009	1,409
San Benito	20,449				20,449	178

□ = Health Plan does not operate in this county. | (-) Notes a value unavailable due to data masking.



FIGURE 10. Community Supports Elections by Managed Care Plans, March 2024⁸

COMMUNITY SUPPORTS	
Housing Transition Navigation Services	Nursing Facility Transition/ Diversion to Assisted Living Facilities
Housing Deposits	Community Transition Services/ Nursing Facility Transition to a Home
Housing Tenancy and Sustaining Services	Personal Care and Homemaker Services
Short-Term Post-Hospitalization Housing	Environmental Accessibility Adaptations (Home Modifications)
Recuperative Care (Medical Respite)	Medically-Supportive Food/ Medically Tailored Meals
Respite Services	Sobering Centers
Day Habilitation Programs	Asthma Remediation

	Gold Coast Health Plan	Kaiser Permanente	CenCal Health	Central California Alliance for Health	Anthem Blue Cross
Ventura	14	13			
Santa Barbara			10		
Monterey				10	
San Luis Obispo			10		
Santa Cruz		13		9	
San Benito				9	14

*Some Community Supports may not be available to all members or in all areas of the county.

FIGURE 11. Community Supports in Calendar Year 2022⁹

TOTAL CENTRAL COAST
MANAGED CARE PLAN (MCP)
MEMBERS*

727,077

	Total MCP Members	Number of Services Available**	Number of Services Provided [§]	Utilization Rate ^{§§}
Ventura	238,537	6	328	14
Santa Barbara	154,347	2	18	1
Monterey	180,076	7	992	55
San Luis Obispo	65,522	2	15	2
Santa Cruz	77,842	6	701	90
San Benito	10,753	8	#	#

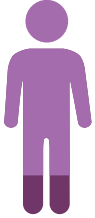
* Total MCP Members Enrolled in Average Month | ** Number of Community Supports Offered by One or More MCPs
 § Total Number of Community Supports Provided to MCP Members | §§ Number of Community Supports Received per 10,000 MCP Members
 # denotes a number under 11 or a number that one can reasonably use to deduce a number under 11



MEDICARE

FIGURE 12. Medicare Enrollment and Percent of Counties' Population, 2021^{4,10}

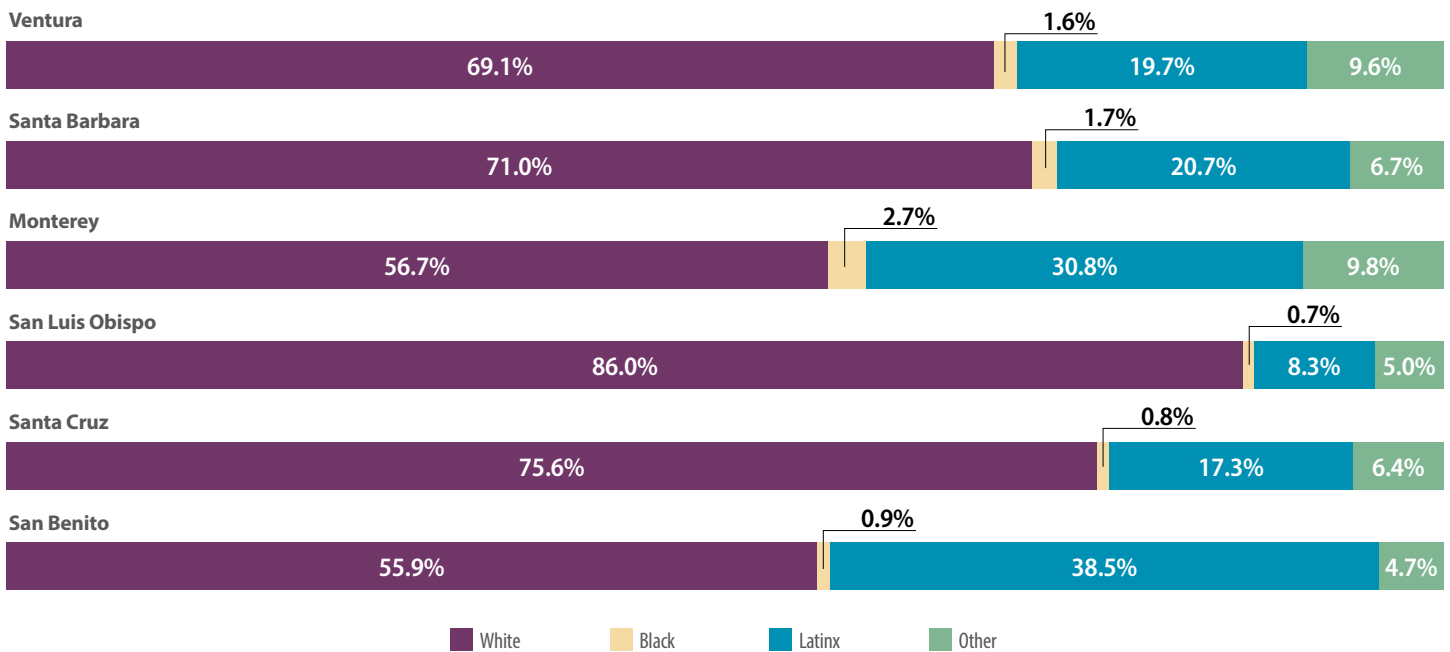
Total Medicare Coverage in the Central Coast
407,293 (17.3%)



	Medicare	Medicare Advantage	Fee-for-Service	Dual Eligible** (January 2024) ⁵
Ventura	146,735 (17.4%)	63,414 (43.2%)	83,321 (56.8%)	27,294 (18.6%)
Santa Barbara	74,272 (16.6%)	15,424 (20.8%)	58,848 (79.2%)	15,028 (20.2%)
Monterey	62,866 (14.3%)	8,254 (13.1%)	54,612 (86.9%)	15,212 (24.2%)
San Luis Obispo	65,008 (23.0%)	14,489 (22.3%)	50,519 (77.7%)	7,726 (11.9%)
Santa Cruz	49,738 (18.4%)	10,733 (21.6%)	39,005 (78.4%)	9,557 (19.2%)
San Benito	8,674 (13.5%)	1,772 (20.4%)	6,902 (79.6%)	1,858 (21.4%)

**Dual Eligibles are those eligible for Medicare and Medi-Cal, also referred to as Medi Medis.

FIGURE 13. Medicare Enrollment by Race/Ethnicity, 2021¹⁰





NOTES

All decimals rounded to nearest tenth.

1. United States Census Bureau, [2020 Census Redistricting Data](#), Accessed: April 12, 2024.
2. UCLA Center for Health Policy Research, [2022 California Health Interview Survey](#), Public Use File, Accessed: April 12, 2024.
3. Covered California, December 2023, [Active Member Profile](#), Accessed: April 12, 2024.
4. Department of Health Care Services, [Medi-Cal Certified Eligibles Data Table by County and Dual Status](#), January 2024, Accessed: April 12, 2024.
5. Department of Health Care Services, [Medi-Cal Certified Eligibles Data Table by County and Aid Code Group](#), January 2024, Accessed: April 12, 2024.
6. Department of Health Care Services, [Medi-Cal Certified Eligibles Data Table Race/Ethnicity and Age](#), January 2024, Accessed: April 12, 2024.
7. Department of Health Care Services, [Medi-Cal Managed Care Enrollment Report](#), February 2024, Accessed: April 12, 2024.
8. Department of Health Care Services, [CalAIM Community Supports – Managed Care Plan Elections](#), March 2024, Accessed: April 12, 2024.
9. Department of Health Care Services, [County-Level Data Summary for Community Supports in CY 2022](#), Accessed: April 12, 2024.
10. Centers for Medicare and Medicaid Services, [Medicare Geographic Variation – by National, State & County](#), 2021, Public Use File, Accessed: April 12, 2024.

Each year ITUP releases Regional Health Coverage fact sheets for its 10 ITUP Regional Equity Collaborative locations (formerly ITUP Regional Workgroups). These publications are overviews highlighting key coverage facts across all coverage types county-by-county.

About ITUP

ITUP is an independent, nonprofit, health policy institute that has been a central voice in the California health landscape for more than two decades. ITUP serves as a trusted expert, grounded in statewide and regional connections with a network of policymakers, health care leaders, and stakeholders. The mission of ITUP is to promote innovative and workable policy solutions that expand health care access and improve the health of all Californians.

ITUP is generously supported by the following funders:

- California Health Care Foundation
- The California Endowment
- The California Wellness Foundation



@ITUP



@InsuretheUninsuredProject



@InsuretheUninsuredProject



www.ITUP.org