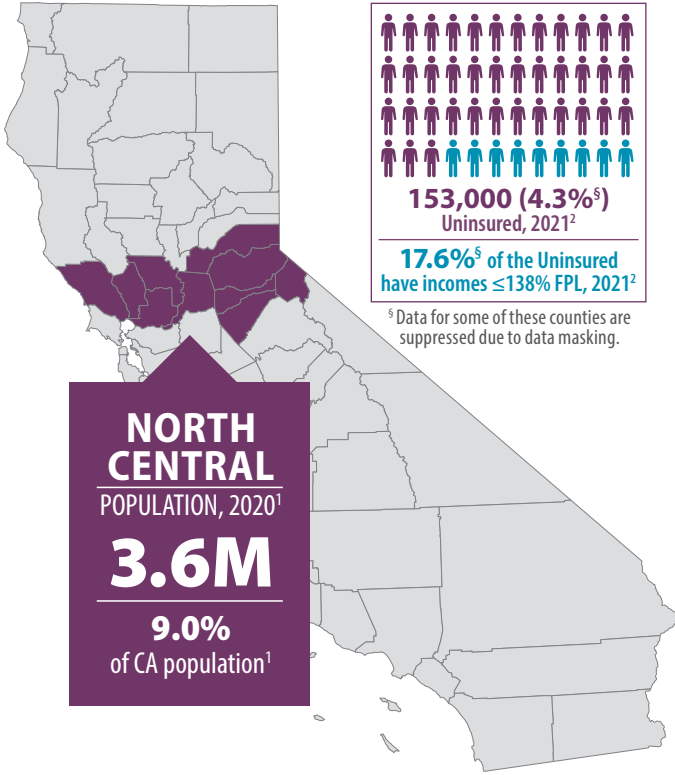


North Central Counties

July 2023

ALPINE, AMADOR, CALAVERAS, EL DORADO, NAPA, PLACER, SACRAMENTO, SOLANO, SONOMA, YOLO



[§] Data for some of these counties are suppressed due to data masking.

	Population ¹	Uninsured, 2021 ²	Uninsured, Incomes \leq 138% Federal Poverty Level (FPL), 2021 ²
Sacramento	1,585,055	50,000 (3.3%)	6,000 (0.4%)
Sonoma	488,863	27,000 (5.7%)	15,000 (3.1%)
Solano	453,491	28,000 (6.6%*)	-
Placer	404,739	11,000 (2.7%*)	-
Yolo	216,403	8,000 (4.0%*)	4,000 (1.8%)
El Dorado	191,185	4,000 (2.0%*)	-
Napa	138,019	10,000 (7.9%*)	2,000 (1.4%)

* Data for these counties are considered statistically unstable. | (-) Notes a value unavailable due to data masking.

	Population ¹
Calaveras	45,292
Amador	40,474
Alpine	1,204

In the California Health Interview Survey dataset², Alpine, Amador, and Calaveras data for this metric are grouped together with ITUP-designated Central Valley counties: Inyo, Mono, and Tuolumne. Data for the uninsured with incomes at or below 138% FPL are not available for these counties due to data masking. See ITUP's Central Valley Regional Coverage Fact Sheet (coming July 2023) for more data on Inyo, Mariposa, Mono, and Tuolumne counties.

Total Number of Uninsured in Amador, Alpine, Calaveras, Inyo, Mariposa, Mono, and Tuolumne counties combined: **5,000 (2.8%)**

FIGURE 1. Race/Ethnicity Among the Uninsured, 2021²

Percent by Race	County Population							Insured							Uninsured						
	Latinx	White	Black	AI/AN	Asian	NH/PI	2+	Latinx	White	Black	AI/AN	Asian	NH/PI	2+	Latinx	White	Black	AI/AN	Asian	NH/PI	2+
Sacramento	23.1%	46.4%	9.5%	0.9%*	14.7%	1.8%*	3.7%	92.5%	97.1%	100.0%*	100.0%*	98.2%*	100.0%*	100.0%*	7.5%	2.9%	-	-	1.8%*	-	-
Sonoma	25.2%	64.0%	1.9%*	-	4.0%*	-	4.5%	87.1%*	97.2%*	-	-	100.0%*	-	100.0%*	12.9%*	2.8%*	-	-	-	-	-
Solano	26.1%	39.3%	15.5%	-	14.7%	-	4.5%	93.3%*	96.3%*	81.1%*	-	96.6%*	-	100.0%*	-	3.7%*	-	-	-	-	-
Placer	13.7%	74.3%	2.0%*	-	5.6%	-	2.1%*	88.4%*	99.1%*	92.1%*	-	100.0%*	-	100.0%*	11.6%*	-	-	-	-	-	-
Yolo	31.8%	47.6%	2.8%*	-	14.5%	-	3.2%*	94.0%*	99.5%*	74.1%*	-	92.4%*	-	100.0%*	6.0%*	-	-	-	7.6%*	-	-
El Dorado	13.9%	77.5%	0.7%*	0.5%*	4.0%	-	3.0%	100.0%*	97.4%*	100.0%*	100.0%*	100.0%*	-	100.0%*	-	2.6%*	-	-	-	-	-
Napa	39.7%	52.7%	-	-	5.5%*	-	1.9%*	81.6%*	99.0%*	-	-	100.0%*	-	97.0%*	18.4%*	1.0%*	-	-	-	-	-

In the California Health Interview Survey dataset², Alpine, Amador, and Calaveras data for these metrics are grouped together with ITUP-designated Central Valley counties: Inyo, Mono, and Tuolumne. In addition, much of the race ethnicity for this group of counties is masked due to data privacy policies. **For these reasons, Alpine, Amador, and Calaveras are excluded from this figure.**



FIGURE 2. Employer-Sponsored Coverage, 2021²

	Employer-Sponsored Coverage Among North Central Counties	Race/Ethnicity Breakdown Among North Central Counties with Employer-Sponsored Coverage						
		Latinx	White	Black	AI/AN	Asian	NH/PI	2+
Sacramento	843,000 (56.0%)	17.3%	48.0%	9.5%	1.1%*	17.6%	-	4.5%*
Sonoma	251,000 (53.0%)	22.0%	69.4%	-	-	0.8%*	-	5.8%*
Solano	196,000 (46.5%)	19.7%	43.0%	9.8%	-	20.5%	-	7.0%*
Placer	226,000 (58.2%)	5.5%*	81.4%	-	-	6.4%*	-	3.5%*
Yolo	145,000 (68.4%)	27.1%	54.0%	1.8%*	-	13.8%	-	3.3%*
El Dorado	104,000 (55.1%)	14.3%	76.8%	-	-	3.9%*	-	3.4%*
Napa	62,000 (46.9%)	29.5%	59.7%	-	-	7.8%*	-	2.5%*
Amador, Alpine, Calaveras, Inyo, Mariposa, Mono, and Tuolumne**	81,000 (46.7%)	9.7%*	78.7%	-	4.8%*	1.0%*	-	5.7%*

** In the California Health Interview Survey dataset², **Alpine, Amador,** and **Calaveras** data for this metric are grouped together with ITUP-designated Central Valley counties: Inyo, Mono, and Tuolumne. See ITUP's Central Valley Regional Coverage Fact Sheet (coming July 2023) for more data on Inyo, Mariposa, Mono, and Tuolumne counties.
 AI/AN=American Indian/Alaska Native | NH/PI = Native Hawaiian/Pacific Islander | 2+ = Two or More Races | * Data for these counties are considered statistically unstable.
 (-) Notes a value unavailable due to data masking

COVERED CALIFORNIA

FIGURE 3. Percent of Counties' Populations Enrolled in Covered California, December 2022³

	Total Enrollment	Subsidized Enrollees	Unsubsidized Enrollees
Sacramento	60,350 (3.8%)	56,340 (93.4%)	4,020 (6.7%)
Sonoma	23,800 (4.9%)	21,450 (90.1%)	2,350 (9.9%)
Solano	13,730 (3.0%)	12,760 (92.9%)	970 (7.1%)
Placer	18,900 (4.7%)	17,360 (91.9%)	1,530 (8.1%)
Yolo	6,900 (3.2%)	6,270 (90.9%)	630 (9.1%)
El Dorado	9,600 (5.0%)	8,880 (92.5%)	720 (7.5%)
Napa	5,660 (4.1%)	5,060 (89.4%)	600 (10.6%)
Calaveras	1,950 (4.3%)	1,860 (95.4%)	90 (4.6%)
Amador	1,580 (3.9%)	1,510 (95.6%)	70 (4.4%)
Alpine	40 (3.3%)	40 (100.0%)	10 (25.0%)

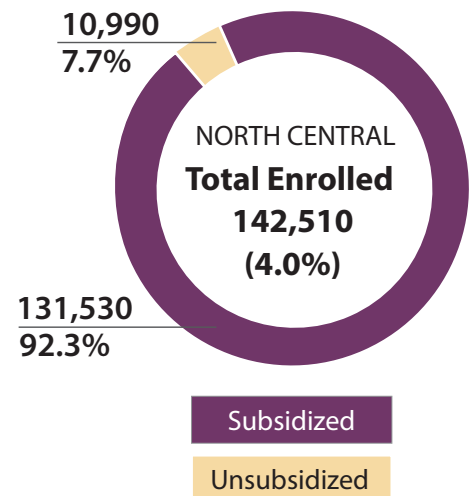
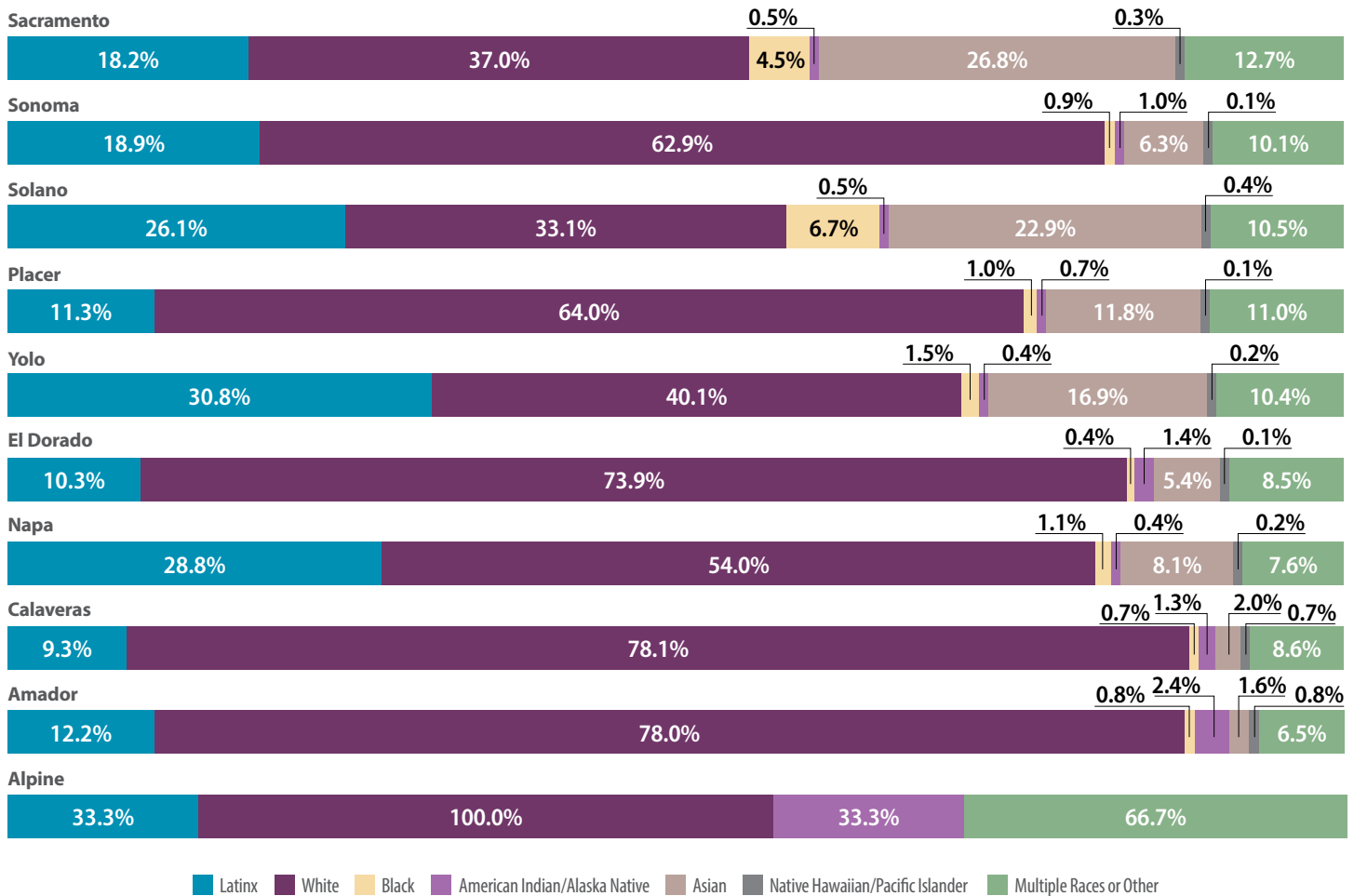




FIGURE 4. Covered California Enrollment by Race/Ethnicity, December 2022³



Covered California's data privacy policy rounds all figures to the nearest 10. As a result, grand totals shown may be more than 100 percent. Alpine county data, because of these rounding policies and a small population size, is particularly skewed. In addition, there was no data available for Black, Asian, and Native Hawaiian/Pacific Islander race/ethnicity categories in Alpine County.

FIGURE 5. Covered California Enrollment by FPL, December 2022³

	Under 138% FPL	Between 138% and 400% FPL	Between 400% and 600% FPL	Over 600% FPL
Sacramento	4.0%	82.9%	7.2%	3.2%
Sonoma	2.7%	73.8%	12.4%	6.4%
Solano	4.5%	79.8%	8.7%	4.0%
Placer	3.0%	75.6%	11.0%	6.2%
Yolo	2.9%	79.6%	9.1%	3.9%
El Dorado	2.8%	73.9%	12.1%	7.2%
Napa	3.9%	70.0%	13.6%	6.9%
Calaveras	3.6%	77.9%	10.8%	5.6%
Amador	3.2%	81.6%	8.9%	4.4%
Alpine	25.0%	100.0%	25.0%	25.0%

Enrollments where the FPL of the member is not known are not included here. Covered California's data privacy policy rounds all figures to the nearest 10. As a result, grand totals shown may be more than 100 percent. **Alpine county data, because of these rounding policies and a small population size, is particularly skewed.**



FIGURE 6. Covered California Enrollment by Health Plan, December 2022³

	Anthem Blue Cross	Blue Shield	Health Net	Kaiser Permanente	Valley Health Plan	Western Health Advantage
Sacramento	1,580	12,380	520	44,040	-	1,830
Sonoma	1,030	2,610	-	17,490	-	2,650
Solano	410	670	-	11,870	-	770
Placer	1,320	5,400	240	11,340	-	600
Yolo	290	2,170	100	3,830	10	510
El Dorado	1,090	3,560	-	4,130	-	810
Napa	170	660	10	4,360	-	470
Calaveras	870	1,080	-	10	-	-
Amador	360	880	-	340	-	-
Alpine	10	40	-	-	-	-

Covered California's privacy policy rounds all figures to the nearest 10. As a result, grand totals shown may be slightly different from the totals in the individual plan data.

MEDI-CAL

FIGURE 7. Medi-Cal Enrollment, February 2023^{4,5}

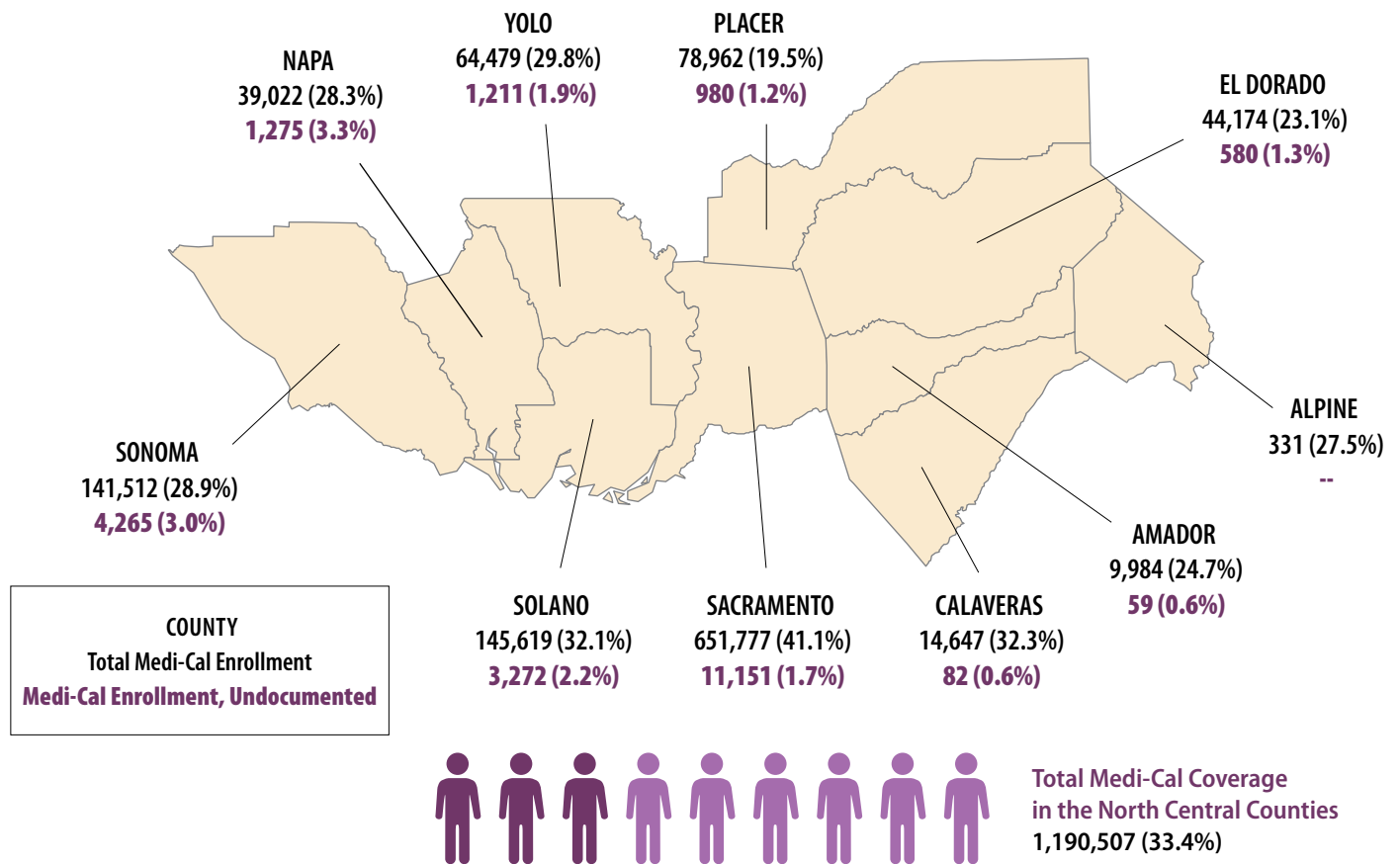
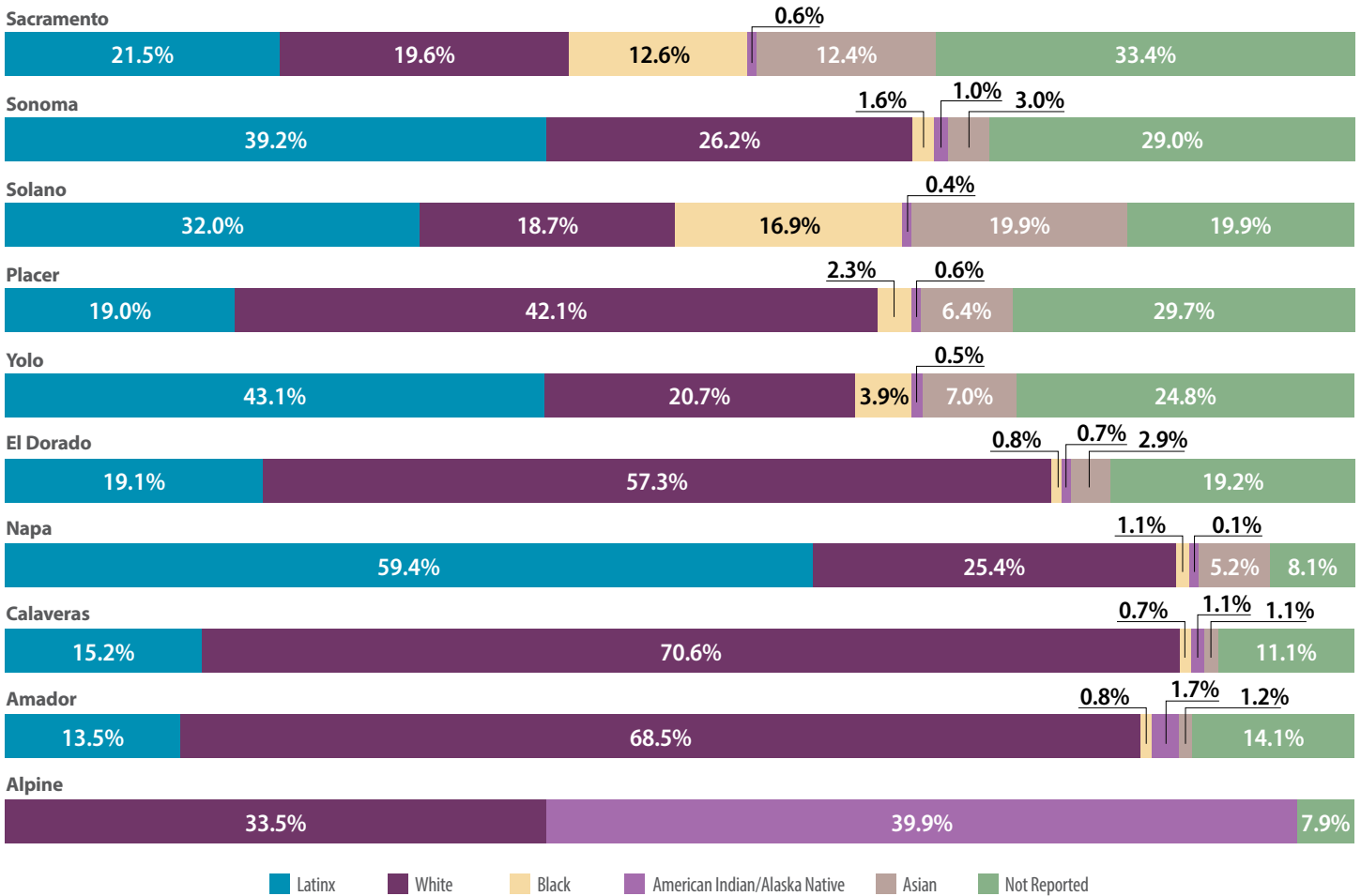




FIGURE 8. Medi-Cal Enrollment by Race/Ethnicity, February 2023⁶



For Alpine county, there is no data available for the following race/ethnicity categories: Latinx, Black, and Asian.

FIGURE 9. Medi-Cal Enrollment in Managed Care and Fee-For-Service (FFS), March 2023⁷

	Medi-Cal MCP Enrollment	Aetna	Health Net	Kaiser Permanente	Anthem Blue Cross	Molina Healthcare	Partnership Health Plan	California Health & Wellness	Medi-Cal FFS Enrollment
Sacramento	603,676	27,998	145,939	128,911	237,694	63,134			48,101
Sonoma	133,496						133,496		8,016
Solano	139,582						139,582		6,037
Placer	73,548			13,937	43,774			15,837	5,414
Yolo	63,256						63,256		1,223
El Dorado	40,703			3,311	15,948			21,444	3,471
Napa	35,643						35,643		3,379
Calaveras	13,397				7,119			6,278	1,250
Amador	9,262			272	6,948			2,042	722
Alpine	266				190			76	65

□ = Health Plan does not operate in this county



FIGURE 10. Community Supports Elections by Managed Care Plans, March 2023⁸

	Aetna	Anthem Blue Cross	Health Net	Kaiser Permanente	Molina Healthcare	Partnership Health Plan	California Health & Wellness
Sacramento	14	14	14	14	14		
Sonoma						8	
Solano						8	
Placer		14		14			14
Yolo						8	
El Dorado		14		14			14
Napa						8	
Calaveras		14					14
Amador		14		14			14
Alpine		14					14

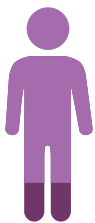
*Some Community Supports may not be available to all members or in all areas of the county.



MEDICARE

FIGURE 11. Medicare Enrollment and Percent of Counties' Population, 2021^{5,8}

Total Medicare Coverage in the North Central Counties
633,556 (17.8%)

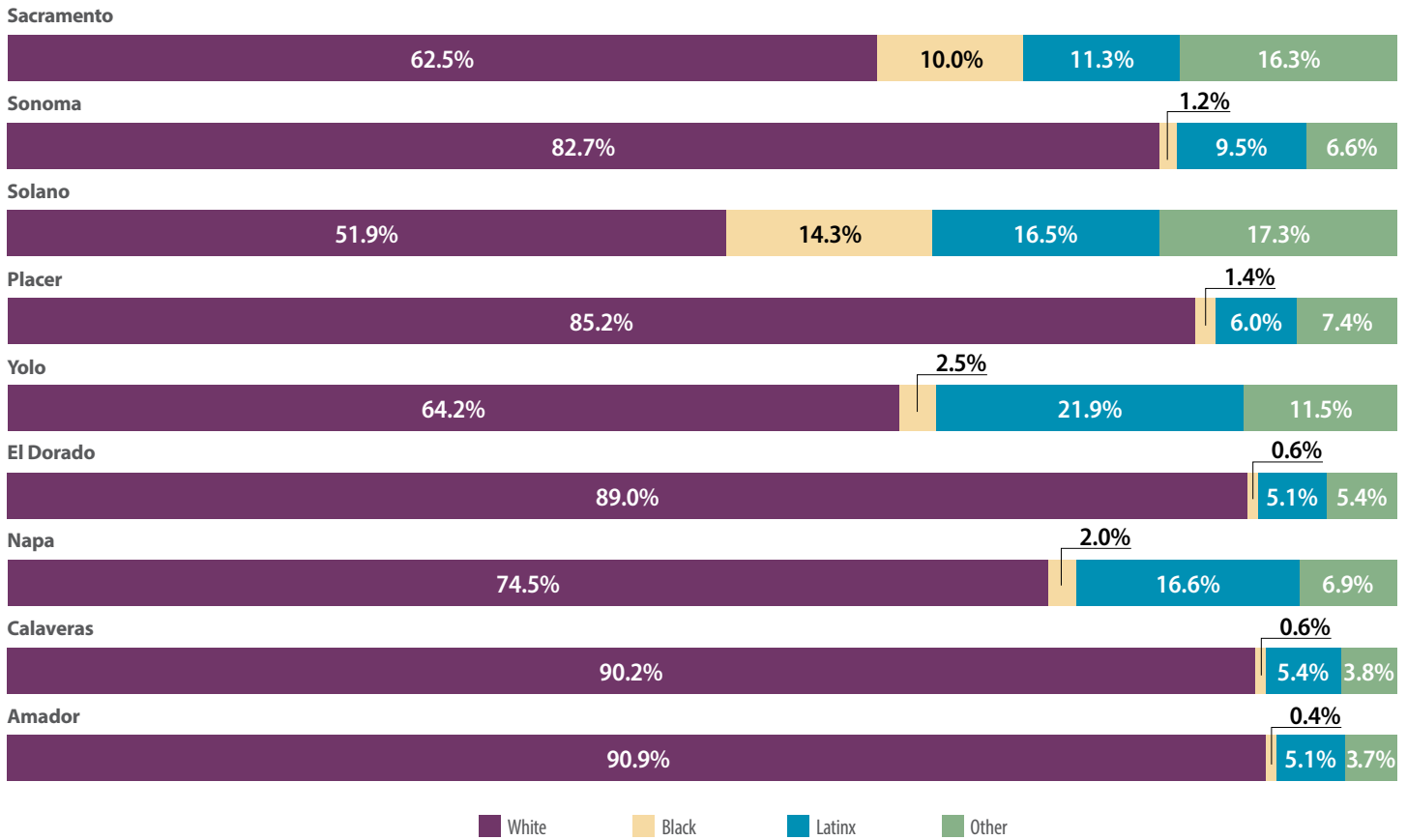


	Medicare	Medicare Advantage	FFS	Dual Eligible** (February 2023) ⁵
Sacramento	242,206 (15.3%)	151,845 (62.7%)	90,361 (37.3%)	71,424 (29.5%)
Sonoma	103,251 (21.1%)	56,754 (55.0%)	46,497 (45.0%)	15,797 (15.3%)
Solano	75,901 (16.7%)	42,703 (56.3%)	33,198 (43.7%)	16,329 (21.5%)
Placer	84,382 (20.8%)	48,328 (57.3%)	36,054 (42.7%)	9,229 (10.9%)
Yolo	30,839 (14.3%)	16,594 (53.8%)	14,245 (46.2%)	7,087 (23.0%)
El Dorado	44,195 (23.1%)	18,891 (42.7%)	25,304 (57.3%)	5,367 (12.1%)
Napa	28,114 (20.4%)	13,231 (47.1%)	14,883 (52.9%)	4,653 (16.6%)
Calaveras	13,040 (28.8%)	1,502 (11.5%)	11,538 (88.5%)	1,883 (14.4%)
Amador	11,368 (28.1%)	3,263 (28.7%)	8,105 (71.3%)	1,384 (12.2%)
Alpine	260 (21.6%)	21 (8.1%)	239 (91.9%)	39 (15.0%)

**Dual Eligibles are those eligible for Medicare and Medi-Cal, also referred to as Medi Medis. Due to small sample sizes and data privacy policies, percentages may equal more than 100 percent. Alpine county is particularly skewed.



FIGURE 12. Medicare Enrollment by Race/Ethnicity, 2021⁸



Due to small sample sizes and data privacy policies, percentages may equal more than 100 percent. All race/ethnicity data is masked for Alpine county, therefore, this county is excluded from this figure.



NOTES

All decimals rounded to nearest tenth.

1. United States Census Bureau, [2020 Census Redistricting Data](#), Accessed: March 27, 2023.
2. UCLA Center for Health Policy Research, [2021 California Health Interview Survey](#), Public Use File, Accessed: March 27, 2023.
3. Covered California, December 2022, [Active Member Profile](#), Accessed: April 10, 2023.
4. Department of Health Care Services, [Medi-Cal Certified Eligibles Data Table by County and Dual Status](#), February 2023, Accessed: April 10, 2023.
5. Department of Health Care Services, [Medi-Cal Certified Eligibles Data Table by County and Aid Code Group](#), February 2023, Accessed: April 10, 2023.
6. Department of Health Care Services, [Medi-Cal Certified Eligibles Data Table Race/Ethnicity and Age](#), February 2023, Accessed: April 10, 2023.
7. Department of Health Care Services, [Medi-Cal Managed Care Enrollment Report](#), March 2023, Accessed: April 10, 2023.
8. Department of Health Care Services, [CalAIM Community Supports – Managed Care Plan Elections](#), February 2023, Accessed: March 27, 2023.
9. Centers for Medicare and Medicaid Services, [Medicare Geographic Variation – by National, State & County](#), 2021, Public Use File, Accessed: March 27, 2023.

Each year ITUP releases Regional Health Coverage fact sheets for its 11 ITUP Regional Workgroup (listening session) locations. These publications are overviews highlighting key coverage facts across all coverage types county-by-county.

About ITUP

ITUP is an independent, nonprofit, health policy institute that has been a central voice in the California health landscape for more than two decades. ITUP serves as a trusted expert, grounded in statewide and regional connections with a network of policymakers, health care leaders, and stakeholders. The mission of ITUP is to promote innovative and workable policy solutions that expand health care access and improve the health of all Californians.

ITUP is generously supported by the following funders:

- California Health Care Foundation
- The California Endowment
- The California Wellness Foundation



@ITUP



@InsuretheUninsuredProject



@InsuretheUninsuredProject



www.itup.org