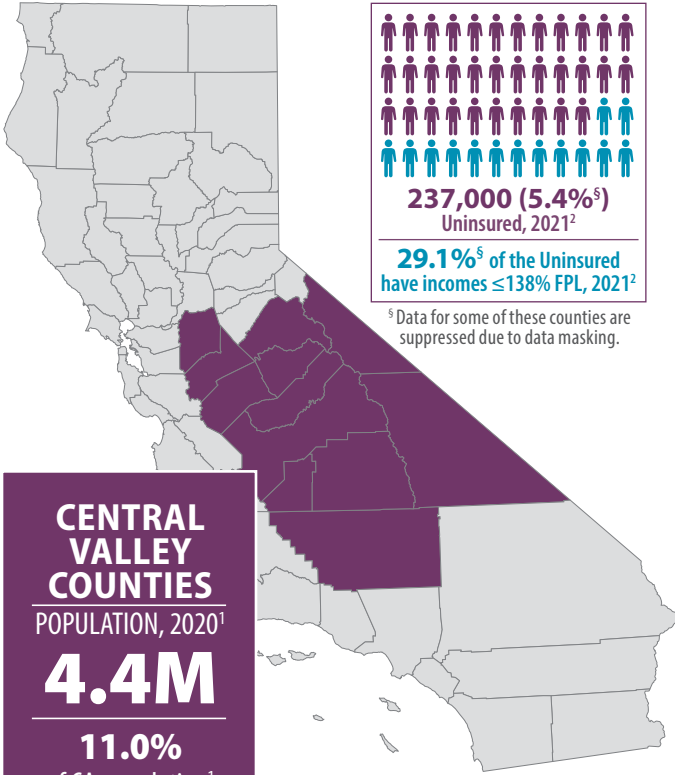


# Central Valley Counties

July 2023

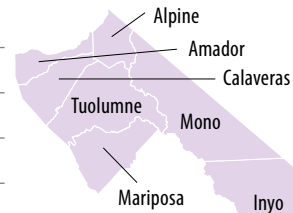
FRESNO, INYO, KERN, KINGS, MADERA, MARIPOSA, MERCED, MONO, SAN JOAQUIN, STANISLAUS, TULARE, TUOLUMNE



	Population <sup>1</sup>	Uninsured, 2021 <sup>2</sup>	Uninsured, Incomes ≤ 138% Federal Poverty Level (FPL), 2021 <sup>2</sup>
Fresno	1,008,654	53,000 (5.4%*)	19,000 (1.9%)
Kern	909,235	80,000 (9.4%)	33,000 (3.6%)
San Joaquin	779,233	28,000 (3.7%*)	-
Stanislaus	552,878	5,000 (0.9%*)	-
Tulare	473,117	29,000 (6.2%*)	-
Merced	281,202	3,000 (1.0%*)	-
Madera	156,255	16,000 (10.8%*)	9,000 (5.8%)
Kings	152,486	18,000 (12.5%)	8,000 (5.2%)

\* Data for these counties are considered statistically unstable. | (-) Notes a value unavailable due to data masking.

	Population <sup>1</sup>
Tuolumne	55,620
Inyo	19,016
Mariposa	17,131
Mono	13,195



**Total Number of Uninsured** in Amador, Alpine, Calaveras, Inyo, Mariposa, Mono, and Tuolumne counties combined: **5,000 (2.8%)**

In the California Health Interview Survey dataset<sup>2</sup>, Inyo, Mariposa, Mono, and Tuolumne data for this metric are grouped together with ITUP-designated North Central counties: Alpine, Amador, and Calaveras. Data for the uninsured with incomes at or below 138 percent FPL are not available for these counties due to data masking. See ITUP's North Central Regional Coverage Fact Sheet for more data on Alpine, Amador, and Calaveras counties.

**FIGURE 1. Race/Ethnicity Among the Uninsured, 2021<sup>2</sup>**

Percent by Race	County Population							Insured							Uninsured							
	Latinx	White	Black	AI/AN	Asian	NH/PI	2+	Latinx	White	Black	AI/AN	Asian	NH/PI	2+	Latinx	White	Black	AI/AN	Asian	NH/PI	2+	
<b>Fresno</b>	52.9%	30.0%	3.3%*	1.4%*	10.0%	0.2%*	2.3%	92.5%*	95.6%*	100.0%*	100.0%*	98.9%*	100.0%*	100.0%*	7.5%*	-	-	-	-	-	-	-
<b>Kern</b>	51.5%	36.8%	6.0%	-	2.4%	-	2.4%	85.1%	99.2%*	76.5%*	-	97.4%*	-	99.1%*	14.9%	-	-	-	-	-	-	-
<b>San Joaquin</b>	40.8%	33.3%	6.1%	-	16.9%	-	2.5%*	93.2%*	97.2%*	100.0%*	-	99.9%*	-	100.0%*	6.8%*	-	-	-	-	-	-	-
<b>Stanislaus</b>	45.8%	43.1%	5.4%	-	3.1%*	-	2.3%*	98.8%*	99.1%*	100.0%*	-	100.0%*	-	100.0%*	-	-	-	-	-	-	-	-
<b>Tulare</b>	62.8%	29.7%	1.4%*	0.2%*	3.3%*	-	2.6%*	90.7%*	99.1%*	100.0%*	100.0%*	100.0%*	-	96.1%*	9.3%*	-	-	-	-	-	-	-
<b>Merced</b>	57.7%	29.3%	3.7%*	-	6.3%	-	2.7%*	99.3%*	97.8%*	100.0%*	-	100.0%*	-	100.0%*	-	-	-	-	-	-	-	-
<b>Madera</b>	60.1%	35.1%	1.0%*	-	2.3%*	-	1.4%*	86.5%*	94.4%*	100.0%*	-	100.0%*	-	45.8%*	13.5%*	-	-	-	-	-	-	-
<b>Kings</b>	56.6%	32.5%	1.9%*	0.7%*	6.2%	-	1.8%*	80.6%	95.2%	100.0%*	100.0%*	100.0%*	-	100.0%*	19.4%	4.8%	-	-	-	-	-	-

In the California Health Interview Survey dataset<sup>2</sup>, Inyo, Mariposa, Mono, and Tuolumne data for these metrics are grouped together with ITUP-designated Central Valley counties: Alpine, Amador, and Calaveras. In addition, much of the race/ethnicity for this group of counties is masked due to data privacy policies. **For these reasons, Inyo, Mariposa, Mono, and Tuolumne are excluded from this figure.**

\*Data for these counties are considered statistically unstable. | (-) Notes are unavailable due to data masking.



**FIGURE 2. Employer-Sponsored Coverage, 2021<sup>2</sup>**

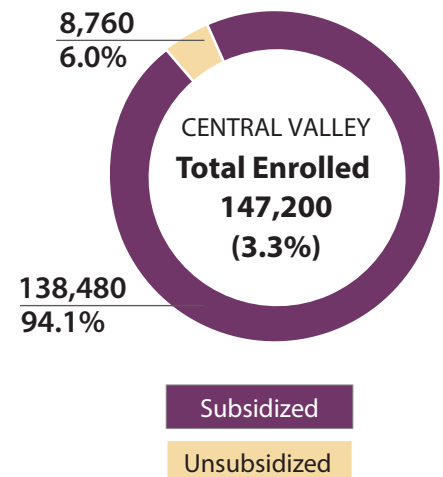
	Employer-Sponsored Coverage Among Central Valley Counties	Race/Ethnicity Breakdown Among Central Valley Counties with Employer-Sponsored Coverage						
		Latinx	White	Black	AI/AN	Asian	NH/PI	2+
<b>Fresno</b>	480,000 (48.4%)	43.1%	38.7%	3.6%*	-	11.5%	-	2.6%*
<b>Kern</b>	300,000 (35.2%)	35.9%	51.6%	4.7%*	-	2.4%*	-	2.7%*
<b>San Joaquin</b>	414,000 (55.2%)	42.9%	29.7%	6.9%	-	17.8%	-	2.7%*
<b>Stanislaus</b>	236,000 (43.6%)	36.9%	49.8%	8.4%*	-	3.1%*	-	1.5%*
<b>Tulare</b>	182,000 (38.8%)	62.2%	32.1%	-	-	2.7%*	-	1.9%*
<b>Merced</b>	101,000 (36.8%)	57.6%	30.2%	-	-	8.4%*	-	3.6%*
<b>Madera</b>	53,000 (36.0%)	47.3%	46.4%	1.1%*	-	3.8%*	-	1.4%*
<b>Kings</b>	58,000 (40.9%)	46.8%	36.4%	-	0.9%*	13.1%	-	1.3%*
<b>Amador, Alpine, Calaveras, Inyo, Mariposa, Mono, and Tuolumne**</b>	81,000 (46.7%)	9.7%*	78.7%	-	4.8%*	1.0%*	-	5.7%*

\*\* In the California Health Interview Survey dataset<sup>2</sup>, **Inyo, Mariposa, Mono, and Tuolumne** data for this metric are grouped together with ITUP-designated North Central counties: Alpine, Amador, and Calaveras counties. See ITUP's [North Central Regional Coverage Fact Sheet](#) for more data on Alpine, Amador, and Calaveras counties.  
 AI/AN=American Indian/Alaska Native | NH/PI = Native Hawaiian/Pacific Islander | 2+ = Two or More Races | \* Data for these counties are considered statistically unstable.  
 (-) Notes a value unavailable due to data masking

## COVERED CALIFORNIA

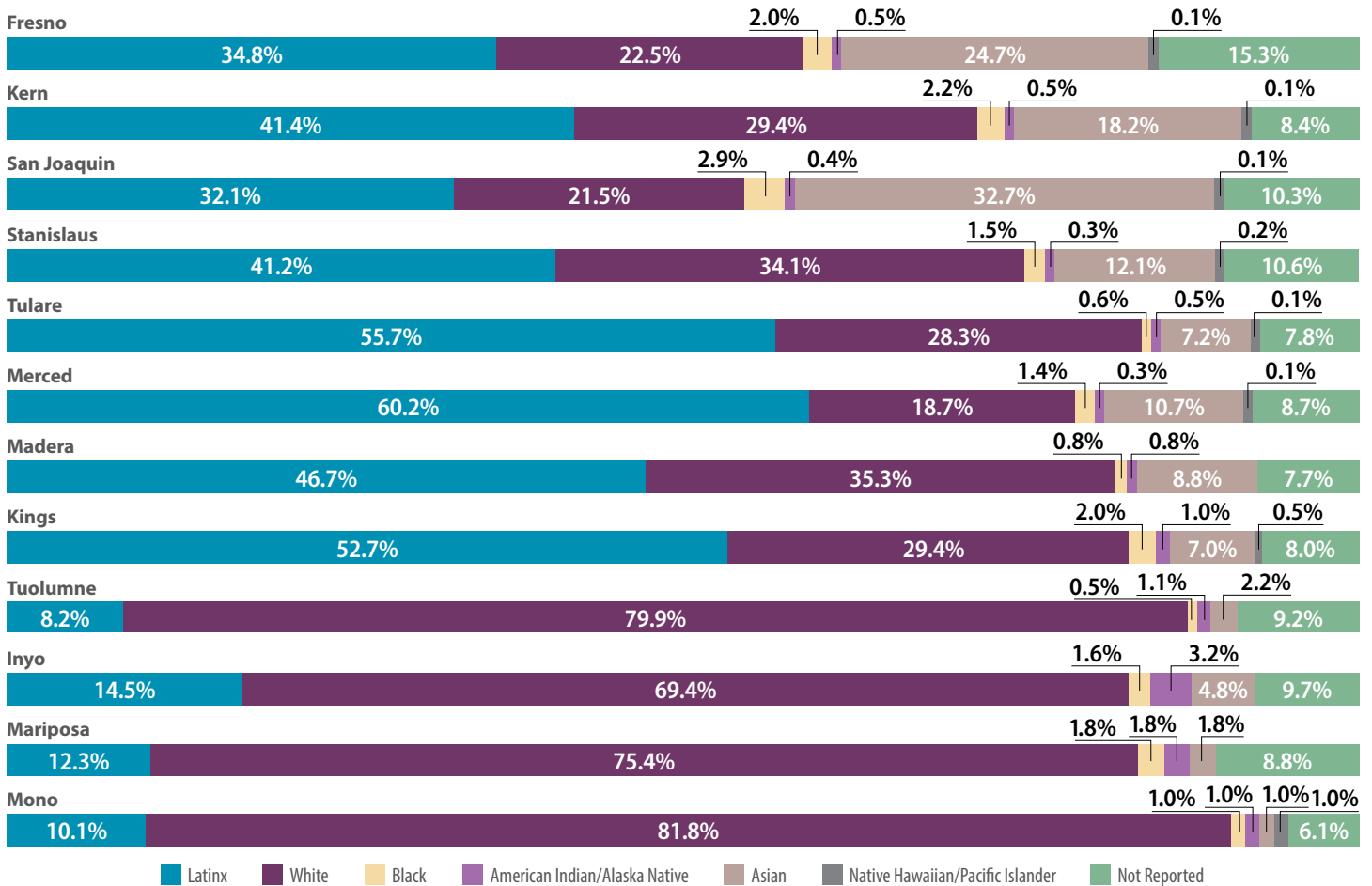
**FIGURE 3. Percent of Counties' Populations Enrolled in Covered California, December 2022<sup>3</sup>**

	Total Enrollment	Subsidized Enrollees	Unsubsidized Enrollees
<b>Fresno</b>	33,600 (3.3%)	31,190 (92.8%)	2,410 (7.2%)
<b>Kern</b>	22,820 (2.5%)	21,300 (93.3%)	1,520 (6.7%)
<b>San Joaquin</b>	34,040 (4.4%)	32,020 (94.1%)	2,020 (5.9%)
<b>Stanislaus</b>	21,120 (3.8%)	19,820 (93.8%)	1,310 (6.2%)
<b>Tulare</b>	11,060 (2.3%)	10,570 (95.6%)	490 (4.4%)
<b>Merced</b>	12,170 (4.3%)	11,920 (97.9%)	250 (2.1%)
<b>Madera</b>	4,850 (3.1%)	4,530 (93.4%)	330 (6.8%)
<b>Kings</b>	2,530 (1.7%)	2,370 (93.7%)	170 (6.7%)
<b>Tuolumne</b>	2,320 (4.2%)	2,250 (97.0%)	80 (3.4%)
<b>Inyo</b>	750 (3.9%)	710 (94.7%)	40 (5.3%)
<b>Mariposa</b>	750 (4.4%)	720 (96.0%)	30 (4.0%)
<b>Mono</b>	1,190 (9.0%)	1,080 (90.8%)	110 (9.2%)





**FIGURE 4. Covered California Enrollment by Race/Ethnicity, December 2022<sup>3</sup>**



Covered California's data privacy policy rounds all figures to the nearest 10. As a result, grand totals shown may be more than 100 percent. There was no data available for the Native Hawaiian/Pacific Islander race/ethnicity category in Madera, Tuolumne, Inyo, and Mariposa counties.

**FIGURE 5. Covered California Enrollment by FPL, December 2022<sup>3</sup>**

	Under 138% FPL	Between 138% and 400% FPL	Between 400% and 600% FPL	Over 600% FPL
Fresno	5.5%	84.5%	5.0%	1.9%
Kern	4.4%	85.3%	5.3%	2.0%
San Joaquin	4.4%	84.4%	6.5%	2.3%
Stanislaus	2.9%	85.2%	7.1%	2.2%
Tulare	4.7%	86.0%	5.2%	2.1%
Merced	2.3%	87.8%	7.2%	1.6%
Madera	3.3%	84.9%	6.6%	2.3%
Kings	4.7%	85.0%	5.9%	1.2%
Tuolumne	3.9%	81.5%	10.3%	3.9%
Inyo	4.0%	76.0%	12.0%	6.7%
Mariposa	2.7%	80.0%	9.3%	4.0%
Mono	1.7%	72.3%	11.8%	8.4%

Enrollments where the FPL of the member is not known are not included here. Covered California's data privacy policy rounds all figures to the nearest 10. As a result, grand totals shown may be more than 100 percent.



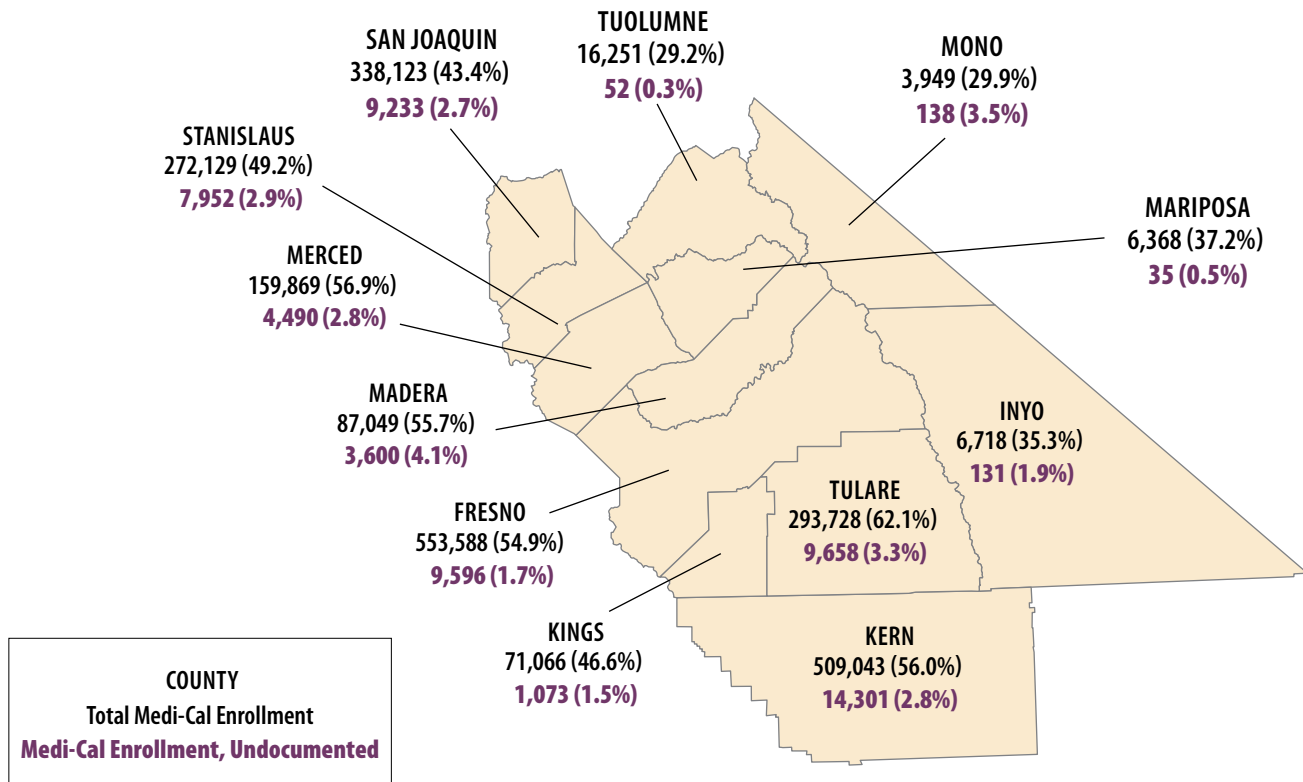
**FIGURE 6. Covered California Enrollment by Health Plan, December 2022<sup>3</sup>**

	Anthem Blue Cross	Blue Shield	Health Net	Kaiser Permanente	LA Care Health Plan	Molina Healthcare	Oscar Health Plan	Valley Health Plan
<b>Fresno</b>	2,810	21,270	10	9,520	-	-	-	-
<b>Kern</b>	230	15,820	1,820	4,950	-	10	10	-
<b>San Joaquin</b>	5,880	2,100	10	26,060	-	-	10	10
<b>Stanislaus</b>	5,430	1,650	10	14,040	-	-	-	-
<b>Tulare</b>	8,460	2,300	20	290	-	-	-	-
<b>Merced</b>	10,360	1,790	10	10	10	10	10	-
<b>Madera</b>	420	2,940	-	1,490	-	-	-	-
<b>Kings</b>	240	2,140	-	150	-	-	-	-
<b>Tuolumne</b>	1,150	1,170	-	10	-	-	-	-
<b>Inyo</b>	60	700	-	-	-	-	-	-
<b>Mariposa</b>	500	230	-	20	-	-	-	-
<b>Mono</b>	30	1,160	-	-	-	-	-	-

Covered California’s privacy policy rounds all figures to the nearest 10. As a result, grand totals shown may be slightly different from the totals in the individual plan data.  
 (-) Notes a value unavailable due to masking.

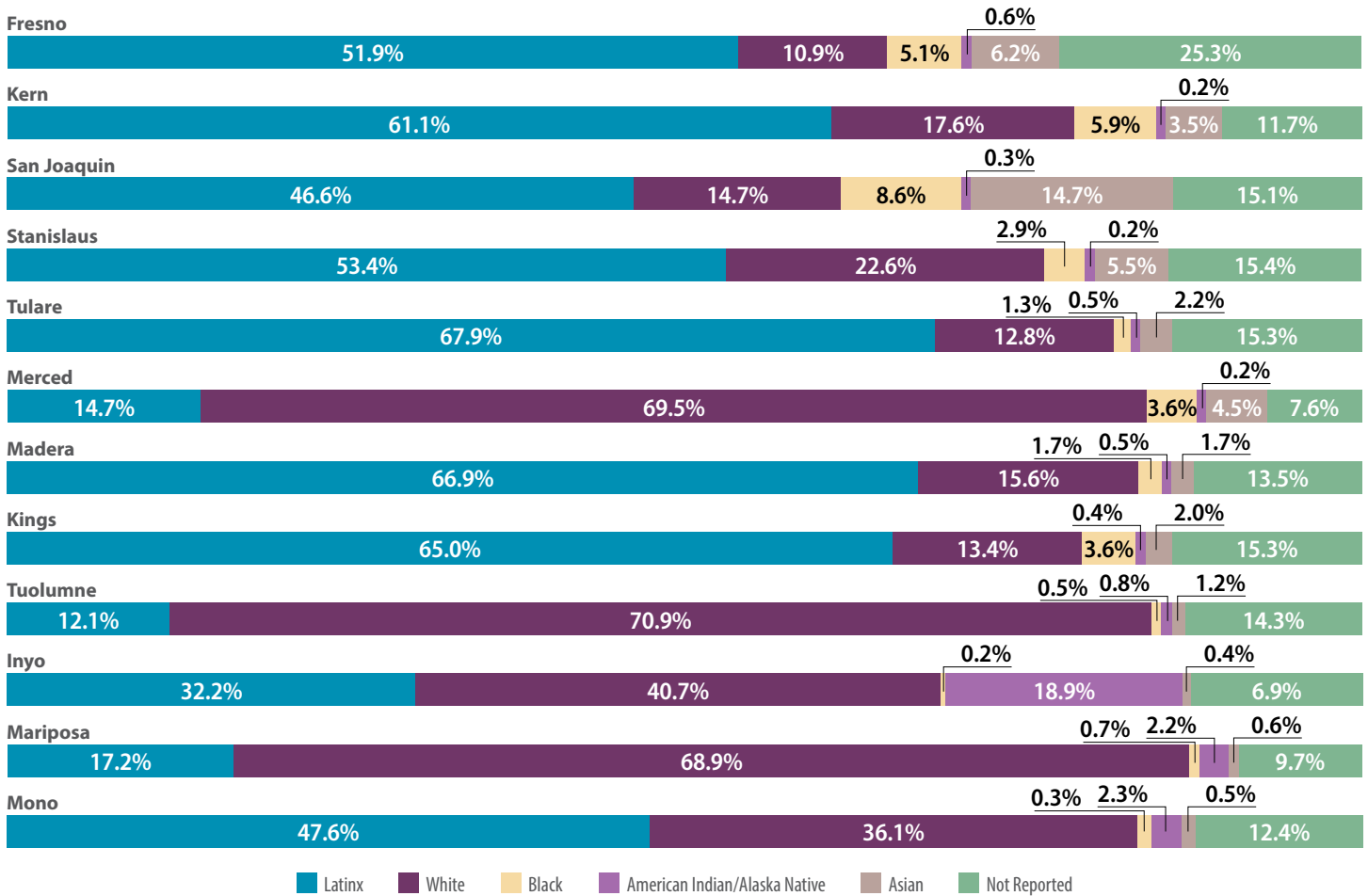
## MEDI-CAL

**FIGURE 7. Medi-Cal Enrollment, March 2023<sup>4,5</sup>**





**FIGURE 8. Medi-Cal Enrollment by Race/Ethnicity, March 2023<sup>6</sup>**



**FIGURE 9. Medi-Cal Enrollment in Managed Care and Fee-For-Service (FFS), March 2023<sup>7</sup>**

	Medi-Cal MCP Enrollment	Central California Alliance	Health Net	Anthem Blue Cross	CalViva Health	Kern Health Systems	Health Plan of San Joaquin	California Health & Wellness	Medi-Cal FFS Enrollment
Fresno	509,059			157,746	351,313				44,529
Kern	462,587		96,032			366,555			46,456
San Joaquin	308,519		31,983				276,536		29,604
Stanislaus	248,460		73,357				175,103		23,669
Tulare	269,080		131,402	137,678					24,648
Merced	151,913	151,913							7,956
Madera	77,987			30,579	47,408				9,062
Kings	64,569			25,797	38,772				6,497
Tuolumne	15,185			8,398			6,787		1,066
Inyo	5,778			3,401			2,377		940
Mariposa	5,895			4,614			1,281		473
Mono	3,344			2,202			1,142		605

□ = Health Plan does not operate in this county.



**FIGURE 10. Community Supports Elections by Managed Care Plans, February 2023<sup>8</sup>**

	Anthem Blue Cross	CalViva Health	Health Net	Kern Family Health Care	Health Plan of San Joaquin	Central California Alliance	California Health & Wellness
Fresno	14	14					
Kern			14	13			
San Joaquin			14		14		
Stanislaus			14		14		
Tulare	14		14				
Merced						8	
Madera	14	14					
Kings	14	14					
Tuolumne	14						14
Inyo	14						14
Mariposa	14						14
Mono	14						14

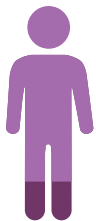
\*Some Community Supports may not be available to all members or in all areas of the county.



## MEDICARE

**FIGURE 11. Medicare Enrollment and Percent of Counties' Population, 2021<sup>4,9</sup>**

**Total Medicare Coverage in the Central Valley  
603,326 (13.7%)**

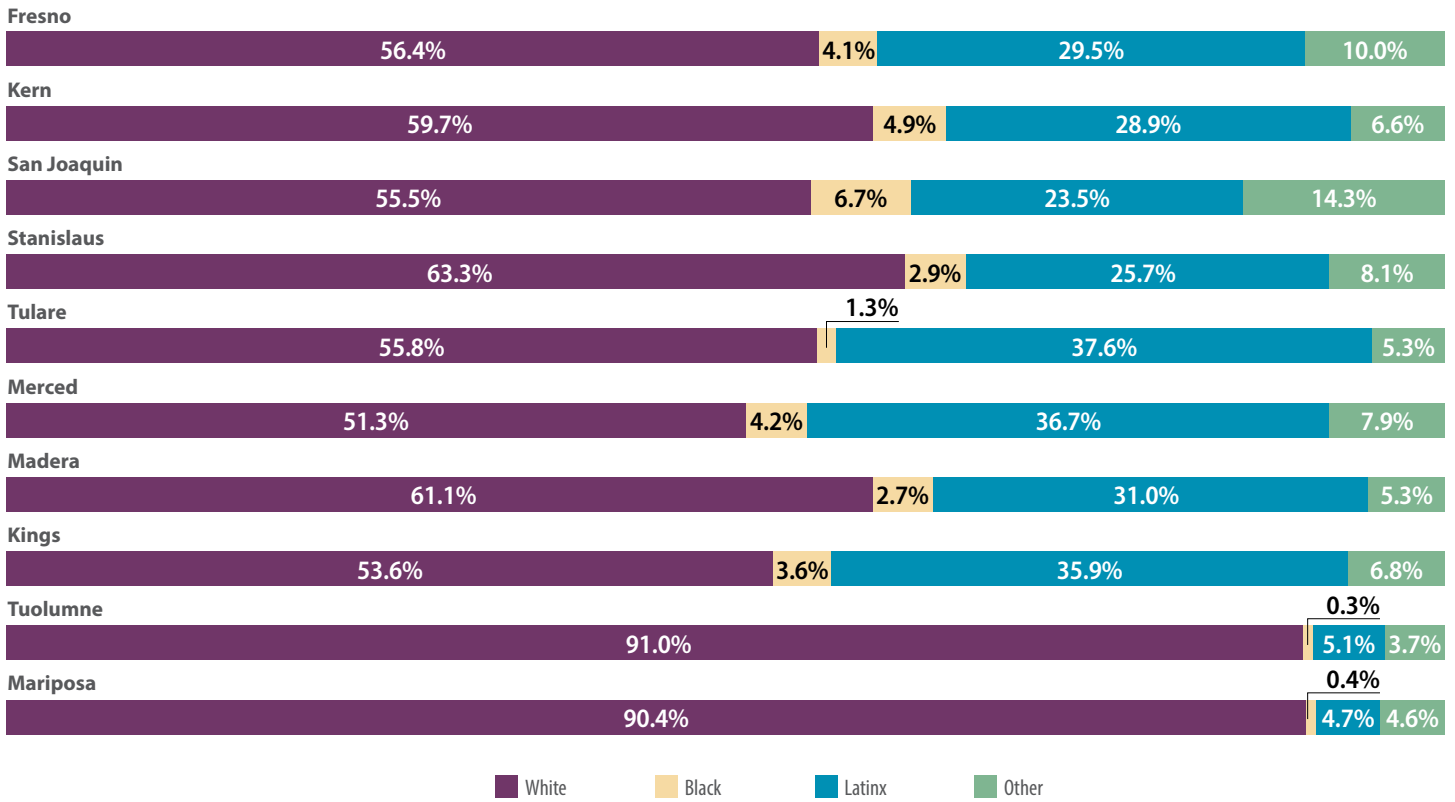


	Medicare	Medicare Advantage	Fee-for-Service	Dual Eligible** (February 2023) <sup>5</sup>
Fresno	133,485 (13.2%)	58,947 (44.2%)	74,538 (55.8%)	46,136 (34.6%)
Kern	115,230 (12.7%)	55,925 (48.5%)	59,305 (51.5%)	39,858 (34.6%)
San Joaquin	105,826 (13.6%)	56,973 (53.8%)	48,853 (46.2%)	31,835 (30.1%)
Stanislaus	83,791 (15.2%)	47,430 (56.6%)	36,361 (43.4%)	24,938 (29.8%)
Tulare	61,413 (13.0%)	18,874 (30.7%)	42,539 (69.3%)	24,142 (39.3%)
Merced	36,336 (12.9%)	7,985 (22.0%)	28,351 (78.0%)	13,380 (36.8%)
Madera	23,635 (15.1%)	10,781 (45.6%)	12,854 (54.4%)	6,589 (27.9%)
Kings	17,020 (11.2%)	5,469 (32.1%)	11,551 (67.9%)	5,894 (34.6%)
Tuolumne	15,608 (28.1%)	1,321 (8.5%)	14,287 (91.5%)	2,582 (16.5%)
Inyo	4,310 (22.7%)	430 (10.0%)	3,880 (90.0%)	836 (19.4%)
Mariposa	4,694 (27.4%)	497 (10.6%)	4,197 (89.4%)	874 (18.6%)
Mono	1,978 (15.0%)	123 (6.2%)	1,855 (93.8%)	236 (11.9%)

\*\*Dual Eligibles are those eligible for Medicare and Medi-Cal, also referred to as Medi Medis.  
Due to small sample sizes and data privacy policies, percentages may equal more than 100 percent.



**FIGURE 12. Medicare Enrollment by Race/Ethnicity, 2021<sup>8</sup>**



Due to small sample sizes and data privacy policies, percentages may equal more than 100 percent. **Inyo** and **Mono** counties are excluded from this figure because their race/ethnicity data is masked in the Medicare Geographic Variation dataset.



## NOTES

All decimals rounded to nearest tenth.

1. United States Census Bureau, [2020 Census Redistricting Data](#), Accessed: March 27, 2023.
2. UCLA Center for Health Policy Research, [2021 California Health Interview Survey](#), Public Use File, Accessed: March 27, 2023.
3. Covered California, December 2022, [Active Member Profile](#), Accessed: April 10, 2023.
4. Department of Health Care Services, [Medi-Cal Certified Eligibles Data Table by County and Dual Status](#), March 2023, Accessed: May 8, 2023.
5. Department of Health Care Services, [Medi-Cal Certified Eligibles Data Table by County and Aid Code Group](#), March 2023, Accessed: May 8, 2023.
6. Department of Health Care Services, [Medi-Cal Certified Eligibles Data Table Race/Ethnicity and Age](#), March 2023, Accessed: May 8, 2023.
7. Department of Health Care Services, [Medi-Cal Managed Care Enrollment Report](#), March 2023, Accessed: April 10, 2023.
8. Department of Health Care Services, [CalAIM Community Supports – Managed Care Plan Elections](#), February 2023, Accessed: March 27, 2023.
9. Centers for Medicare and Medicaid Services, [Medicare Geographic Variation – by National, State & County](#), 2021, Public Use File, Accessed: March 27, 2023.

Each year ITUP releases Regional Health Coverage fact sheets for its 11 ITUP Regional Workgroup (listening session) locations. These publications are overviews highlighting key coverage facts across all coverage types county-by-county.

### About ITUP

ITUP is an independent, nonprofit, health policy institute that has been a central voice in the California health landscape for more than two decades. ITUP serves as a trusted expert, grounded in statewide and regional connections with a network of policymakers, health care leaders, and stakeholders. The mission of ITUP is to promote innovative and workable policy solutions that expand health care access and improve the health of all Californians.

ITUP is generously supported by the following funders:

- California Health Care Foundation
- The California Endowment
- The California Wellness Foundation



@ITUP



@InsuretheUninsuredProject



@InsuretheUninsuredProject



www.itup.org