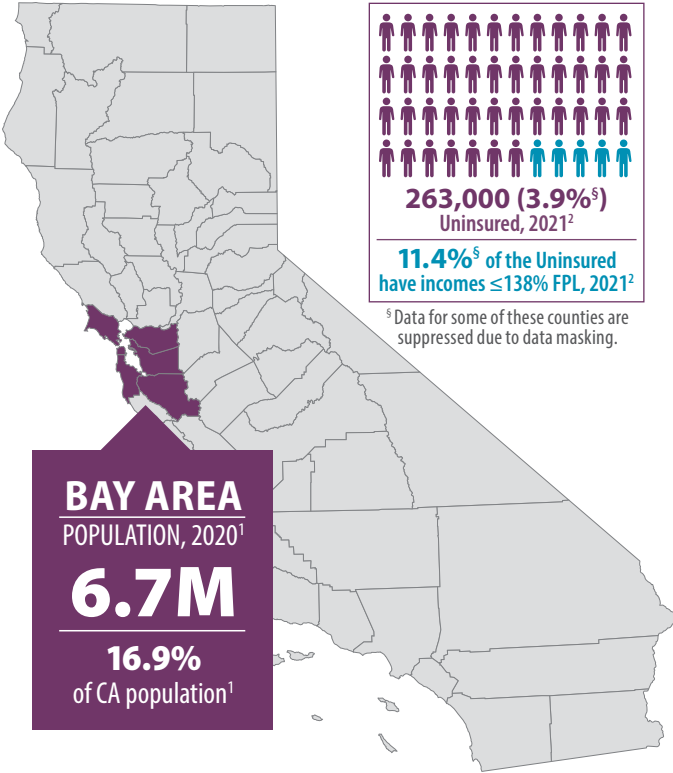


Bay Area Counties

July 2023

ALAMEDA, CONTRA COSTA, MARIN, SAN FRANCISCO, SAN MATEO, SANTA CLARA



	Population ¹	Uninsured, 2021 ²	Uninsured, Incomes ≤ 138% Federal Poverty Level (FPL), 2021 ²
Santa Clara	1,936,259	45,000 (2.4%)	-
Alameda	1,682,353	91,000 (5.6%)	7,000 (0.4%)
Contra Costa	1,165,927	58,000 (5.1%)	23,000 (2.0%)
San Francisco	873,965	30,000 (3.5%)	-
San Mateo	764,442	37,000 (4.8%*)	-
Marin	262,321	2,000 (0.8%*)	-

* Data for these counties are considered statistically unstable. | (-) Notes a value unavailable due to data masking.

FIGURE 1. Race/Ethnicity Among the Uninsured in Bay Area Counties, 2021²

Percent by Race	County Population							Insured							Uninsured						
	Latinx	White	Black	AI/AN	Asian	NH/PI	2+	Latinx	White	Black	AI/AN	Asian	NH/PI	2+	Latinx	White	Black	AI/AN	Asian	NH/PI	2+
Santa Clara	27.4%	33.4%	2.6%*	-	32.6%	-	4.0%	98.5%*	98.6%	100.0%*	-	95.7%*	-	97.8%*	1.5%*	1.4%*	-	-	4.3%*	-	-
Alameda	23.5%	33.4%	11.1%	0.3%*	27.9%	1.0%*	2.9%	85.4%	96.8%*	99.3%*	-	96.4%*	100.0%*	100.0%*	14.6%	3.2%*	-	-	3.6%*	-	-
Contra Costa	25.6%	45.3%	10.1%	-	13.4%	-	4.7%	90.2%	97.2%*	96.2%*	-	96.8%*	-	89.3%	9.8%	2.8%*	-	-	3.2%*	-	-
San Francisco	15.1%	44.0%	3.4%*	-	31.1%	0.8%*	5.7%	90.3%*	99.4%*	100.0%*	-	95.2%*	100.0%*	95.2%*	9.7%*	0.6%*	-	-	4.8%*	-	-
San Mateo	26.3%	40.6%	-	-	28.0%	-	3.9%	96.1%*	95.9%	-	-	92.3%*	-	100.0%*	-	4.1%*	-	-	7.7%*	-	-
Marin	18.1%	71.6%	-	-	4.9%*	-	3.7%*	96.7%*	99.7%*	-	-	100.0%*	-	100.0%*	-	-	-	-	-	-	-

AI/AN=American Indian/Alaska Native | NH/PI= Native Hawaiian/Pacific Islander | 2+= Two or More Races | * Data for these counties are considered statistically unstable. (-) Notes a value unavailable due to data masking



FIGURE 2. Employer-Sponsored Coverage, 2021²



Total Employer-Sponsored Coverage in the Bay Area
3,910,000 (58.4%)

	Employer-Sponsored Coverage Among Bay Area Counties	Race/Ethnicity Breakdown Among Bay Area Counties with Employer-Sponsored Coverage						
		Latinx	White	Black	AI/AN	Asian	NH/PI	2+
Santa Clara	1,253,000 (65.7%)	21.6%	37.1%	2.7%*	-	33.4%	-	5.1%
Alameda	937,000 (58.2%)	21.7%	36.7%	9.2%	-	28.4%	-	2.9%
Contra Costa	605,000 (53.8%)	23.8%	46.1%	8.4%	-	14.6%	-	6.7%
San Francisco	522,000 (60.5%)	11.1%	52.5%	3.3%*	-	25.1%	-	7.2%
San Mateo	459,000 (60.7%)	22.4%	42.3%	-	-	30.7%	-	4.0%
Marin	134,000 (54.4%)	12.4%	74.8%	-	-	7.4%*	-	2.4%*

AI/AN=American Indian/Alaska Native | NH/PI = Native Hawaiian/Pacific Islander | 2+ = Two or More Races | * Data for these counties are considered statistically unstable (-) Notes a value unavailable due to data masking

COVERED CALIFORNIA

FIGURE 3. Percent of Counties’ Populations Enrolled in Covered California, September 2022³

	Total Enrollment	Subsidized Enrollees	Unsubsidized Enrollees
Santa Clara	64,120 (3.3%)	56,980 (88.9%)	7,140 (11.1%)
Alameda	75,260 (4.5%)	67,730 (90.0%)	7,530 (10.0%)
Contra Costa	51,970 (4.5%)	47,470 (91.3%)	4,500 (8.7%)
San Francisco	33,970 (3.9%)	29,070 (85.6%)	4,910 (14.5%)
San Mateo	27,610 (3.6%)	24,710 (89.5%)	2,900 (10.5%)
Marin	13,900 (5.3%)	11,830 (85.1%)	2,070 (14.9%)

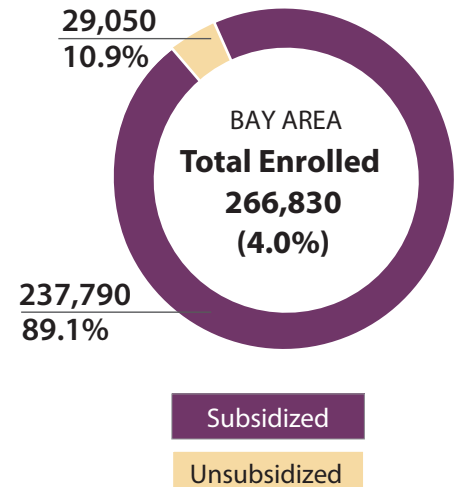




FIGURE 4. Covered California Enrollment by Race/Ethnicity, September 2022³

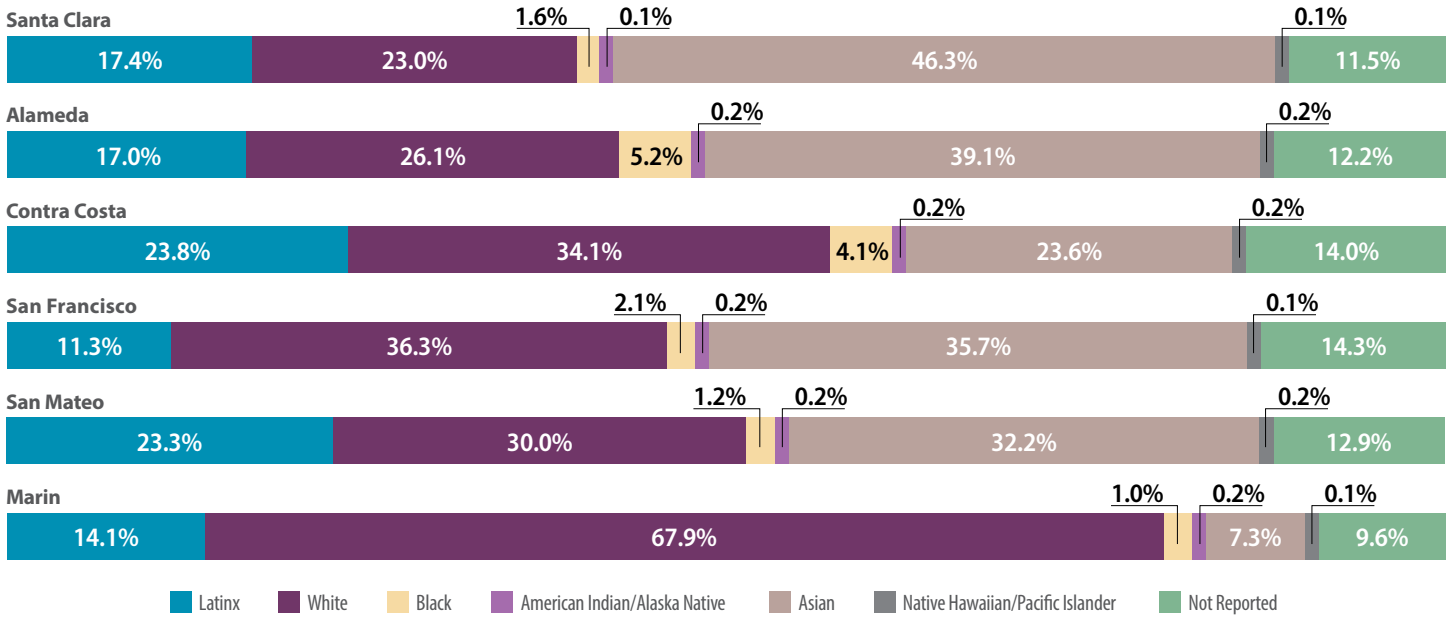


FIGURE 5. Covered California Enrollment by FPL, September 2022³

	Under 138% FPL	Between 138% and 400% FPL	Between 400% and 600% FPL	Over 600% FPL
Santa Clara	2.2%	76.8%	9.8%	5.9%
Alameda	2.5%	78.4%	10.0%	5.0%
Contra Costa	2.0%	78.2%	10.5%	5.3%
San Francisco	1.8%	73.7%	10.4%	7.3%
San Mateo	2.0%	75.1%	11.2%	6.6%
Marin	1.9%	68.1%	12.9%	9.0%

Enrollments where the FPL of the member is not known are not included

FIGURE 6. Covered California Enrollment by Health Plan, September 2022³

	Anthem Blue Cross	Health Net	Kaiser Permanente	Blue Shield	Bright Healthcare	Molina Healthcare	LA Care Health Plan	Oscar Health Plan	Valley Health Plan	Chinese Community Health Plan	Western Health Advantage	Sharp Health Plan
Santa Clara	5,570	-	34,640	5,590	10	-	10	10	18,320	-	-	-
Alameda	1,670	10	59,940	13,620	-	10	10	10	10	-	10	10
Contra Costa	470	80	40,400	10,590	440	-	-	-	10	10	-	-
San Francisco	1,500	20	20,930	8,310	-	10	10	540	10	2,670	-	-
San Mateo	300	30	20,980	5,540	-	-	-	140	-	620	-	10
Marin	330	20	8,780	3,300	-	-	-	-	-	-	1,470	-

Covered California's privacy policy rounds all figures to the nearest 10. As a result, grand totals shown may be slightly different from the totals in the individual plan data.

(-) Notes a value unavailable due to data masking



MEDI-CAL

FIGURE 7. Medi-Cal Enrollment, January 2023^{4,5}



Total Medi-Cal Coverage in the Bay Area
1,775,701 (26.5%)

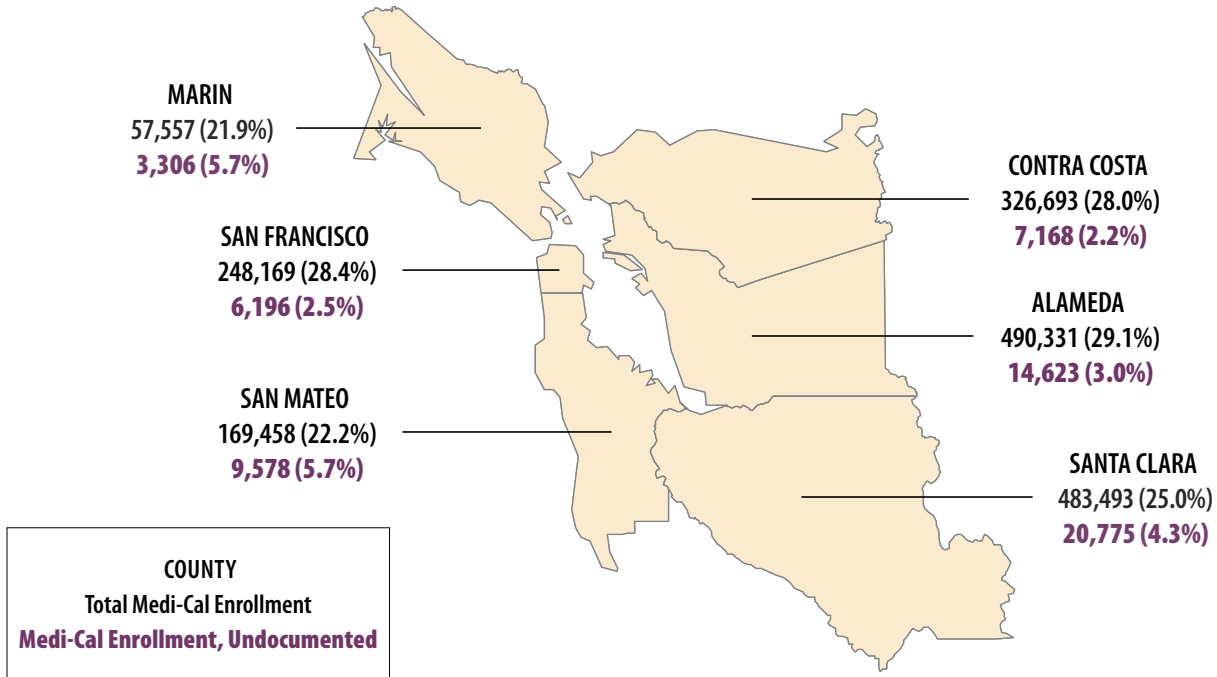


FIGURE 8. Medi-Cal Enrollment by Race/Ethnicity January 2023⁶

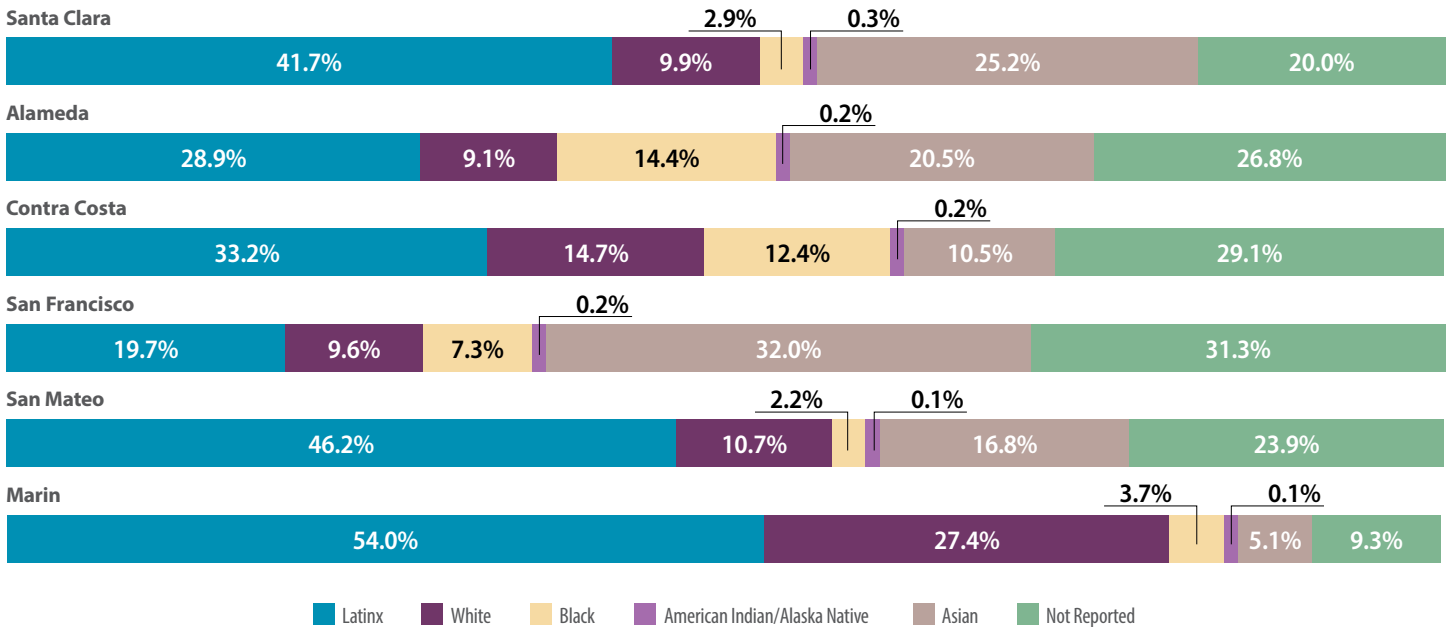




FIGURE 9. Medi-Cal Enrollment in Managed Care and Fee-For-Service (FFS), January 2023⁷

	Medi-Cal Managed Care Plan Enrollment	Anthem Blue Cross	Santa Clara Family Health	Alameda Alliance for Health	Contra Costa Health Plan	San Francisco Health Plan	Health Plan of San Mateo	Partnership Health Plan of California	Medi-Cal FFS Enrollment
Santa Clara	414,913	90,447	324,466						68,580
Alameda	407,634	82,953		324,681					82,697
Contra Costa	281,539	37,583			243,956				45,154
San Francisco	200,272	28,356				171,916			47,897
San Mateo	149,099						149,099		20,359
Marin	50,958							50,958	6,599

□ = Health Plan does not operate in this county

FIGURE 10. Community Supports Elections by Managed Care Plans, February 2023⁸

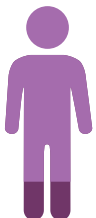
	Anthem Blue Cross	Santa Clara Family Health	Alameda Alliance for Health	Contra Costa Health Plan	San Francisco Health Plan	Health Plan of San Mateo	Partnership Health Plan of California
Santa Clara	14	14					
Alameda	14		8				
Contra Costa	14			13			
San Francisco	14				6		
San Mateo						9	
Marin							8

*Some Community Supports may not be available to all members or in all areas of the county.

MEDICARE

FIGURE 11. Medicare Enrollment and Percent of Counties' Population, 2021^{4,9}

Total Medicare Coverage in the Bay Area
963,915 (14.4%)

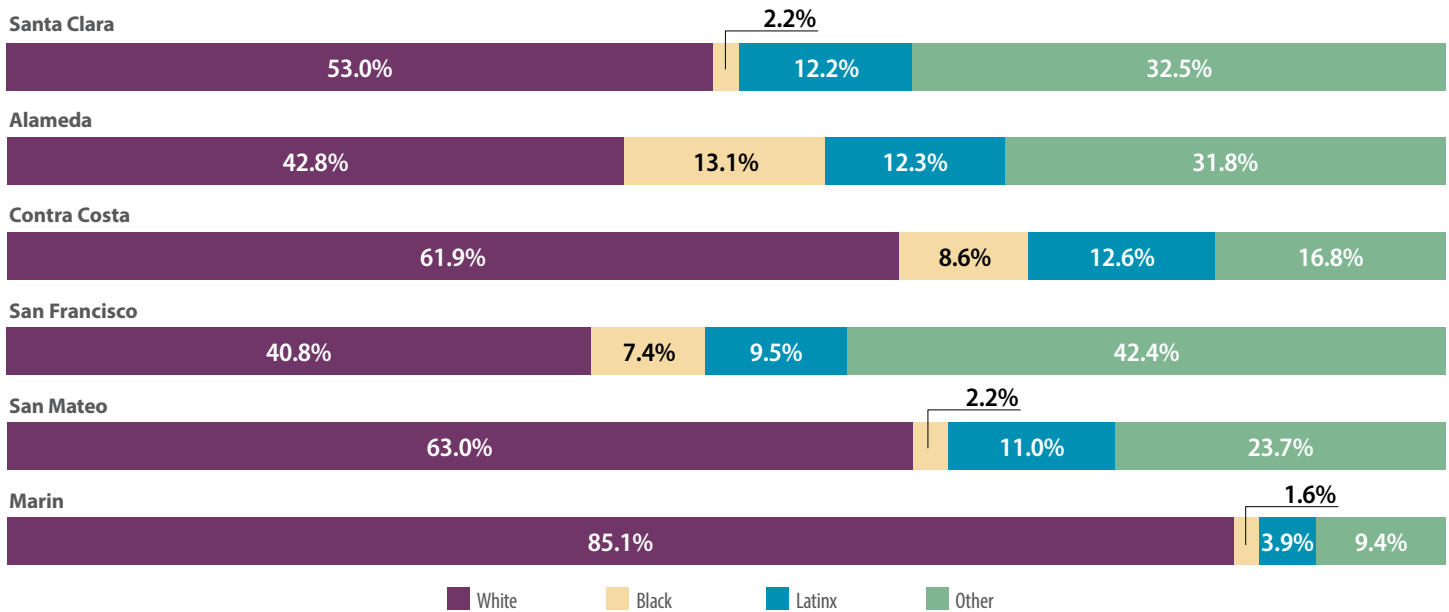


	Medicare	Medicare Advantage	Fee-for-Service	Dual Eligible** (February 2022) ⁵
Santa Clara	246,448 (12.7%)	136,867 (55.5%)	109,581 (44.5%)	64,336 (26.1%)
Alameda	222,906 (13.2%)	125,018 (56.1%)	97,888 (43.9%)	66,025 (29.6%)
Contra Costa	186,564 (16.0%)	107,111 (57.4%)	79,453 (42.6%)	36,204 (19.4%)
San Francisco	135,007 (15.4%)	69,775 (51.7%)	65,232 (48.3%)	52,796 (39.1%)
San Mateo	116,923 (15.3%)	65,872 (56.3%)	51,051 (43.7%)	19,918 (17.0%)
Marin	56,067 (21.4%)	27,064 (48.3%)	29,003 (51.7%)	6,163 (11.0%)

**Dual Eligibles are those eligible for Medicare and Medi-Cal, also referred to as Medi Medis



FIGURE 12. Medicare Enrollment, by Race/Ethnicity, 2021⁹



NOTES

All decimals rounded to nearest tenth.

1. United States Census Bureau, [2020 Census Redistricting Data](#), Accessed: March 27, 2023.
2. UCLA Center for Health Policy Research, [2021 California Health Interview Survey](#), Public Use File, Accessed: March 27, 2023.
3. Covered California, September 2022, [Active Member Profile](#), Accessed: March 27, 2023.
4. Department of Health Care Services, [Medi-Cal Certified Eligibles Data Table by County and Dual Status](#), January 2023, Accessed: March 27, 2023.
5. Department of Health Care Services, [Medi-Cal Certified Eligibles Data Table by County and Aid Code Group](#), January 2023, Accessed: March 27, 2023.
6. Department of Health Care Services, [Medi-Cal Certified Eligibles Data Table Race/Ethnicity and Age](#), January 2023, Accessed: March 27, 2023.
7. Department of Health Care Services, [Medi-Cal Managed Care Enrollment Report](#), January 2023, Accessed: March 27, 2023.
8. Department of Health Care Services, [CalAIM Community Supports – Managed Care Plan Elections](#), February 2023, Accessed: March 27, 2023.
9. Centers for Medicare and Medicaid Services, [Medicare Geographic Variation – by National, State & County](#), 2021, Public Use File, Accessed: March 27, 2023.

Each year ITUP releases Regional Health Coverage fact sheets for its 11 ITUP Regional Workgroup (listening session) locations. These publications are overviews highlighting key coverage facts across all coverage types county-by-county.

About ITUP

ITUP is an independent, nonprofit, health policy institute that has been a central voice in the California health landscape for more than two decades. ITUP serves as a trusted expert, grounded in statewide and regional connections with a network of policymakers, health care leaders, and stakeholders. The mission of ITUP is to promote innovative and workable policy solutions that expand health care access and improve the health of all Californians.

ITUP is generously supported by the following funders:

- California Health Care Foundation
- The California Endowment
- The California Wellness Foundation



@ITUP



@InsuretheUninsuredProject



@InsuretheUninsuredProject



www.itup.org