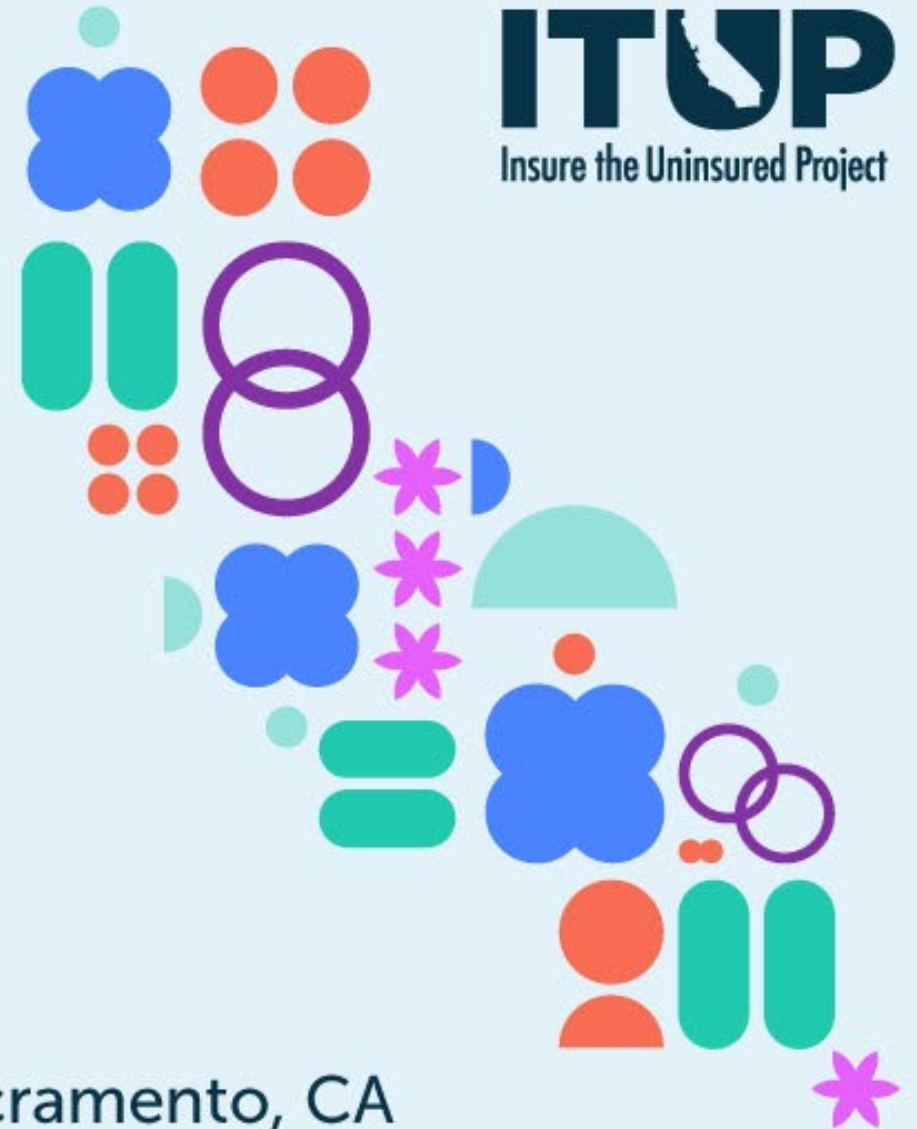


ITUP 27<sup>th</sup> Annual Conference

# CULTIVATING AN EQUITABLE FUTURE OF HEALTH

In-Person Conference • Feb. 6 -7, 2023 • Sacramento, CA



ITUP 27<sup>th</sup> Annual Conference • Feb. 6-7, 2023

# **CULTIVATING** **AN EQUITABLE FUTURE OF HEALTH**



## **SYSTEMIC CHANGE: INNOVATIONS FOSTERING AN ANTI-RACIST HEALTH CARE SYSTEM**

**#ITUP2023**

# SYSTEMIC CHANGE: INNOVATIONS FOSTERING AN ANTI-RACIST HEALTH CARE SYSTEM

CULTIVATING AN EQUITABLE  
FUTURE OF HEALTH

**Robert Phillips, MPA, MPH** (he/him)

Principal Managing Partner, Griffin McKenzie LLC and Member,  
ITUP Board of Directors (*Moderator*)

**Ronald Coleman Baeza, JD** (he/him)

Managing Director of Policy, California Pan-Ethnic Health  
Network

**Mayra E. Alvarez, MHA** (she/her)

President, The Children's Partnership

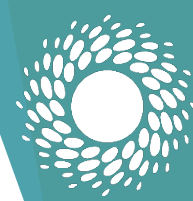
**Martha Santana-Chin, MBA** (she/her)

Medi-Cal and Medicare President, HealthNet

**Palav Babaria, MD, MHS** (she/her)

Chief Quality Officer and Deputy Director, Quality and  
Population Health Management, California Department of  
Health Care Services

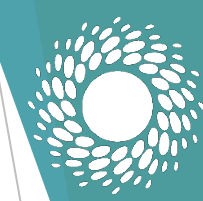
#ITUP2023



California Pan-Ethnic  
HEALTH NETWORK

# Systemic Change Innovations Fostering an Anti-Racist Health Care System

**Ronald Coleman Baeza**  
**Managing Director of Policy**  
**California Pan-Ethnic Health Network (CPEHN)**  
**ITUP Conference - Sacramento**  
**February 7, 2023**



CPEHN ensures health justice and equity are on the agendas of policymakers and that communities are leading policy efforts

**We build people power** to educate and influence policymakers through lived experience and community expertise for better health equity



**We pass, change, and implement policies** that reflect community needs for better health



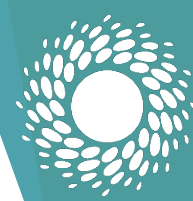
**We invest in communities of color** to build leadership, sustainability, and advocacy

**We connect data, stories, partners, and regions** to build knowledge, relationships, and understanding across cultures



**To create equitable conditions** that promote health equity and allow communities of color and all residents to thrive and prosper



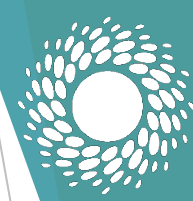


# How does CPEHN work to address racism in healthcare delivery?

- Health Systems
- Mental Health and Oral Health
- Public Health

# Fostering an Anti-Racist Health Care System through Statewide Advocacy

- ▶ Racism As a Public Health Crisis
- ▶ Health Equity and Racial Justice Fund
- ▶ Improving the Proposed Racial Equity Commission
- ▶ Enhancing Data to Reduce Disparities
- ▶ Engaging Communities to Reduce Bias



California Pan-Ethnic  
HEALTH NETWORK

For More information:

Ronald Coleman Baeza

Managing Director of Policy

California Pan-Ethnic Health Network

[rcoleman@cpehn.org](mailto:rcoleman@cpehn.org)





# Systemic Change: Innovations Fostering an Anti-Racist Health Care System

Mayra E Alvarez

February 7, 2023

[www.childrenspartnership.org](http://www.childrenspartnership.org)

@kidspartnership



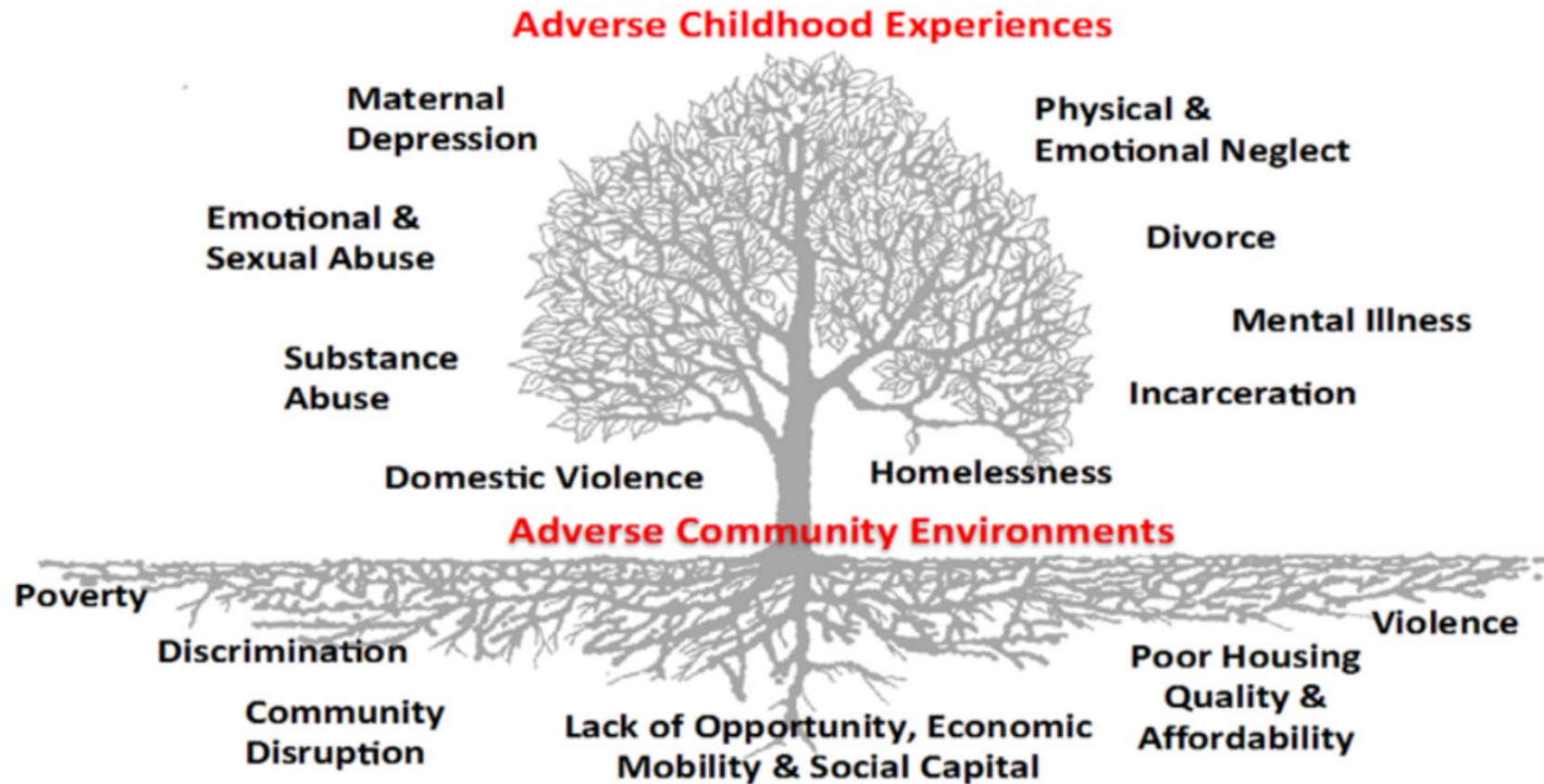


# Who We Are

**The Children's Partnership is a California advocacy organization working to advance child health equity through research, policy and community engagement.**



# Racism as a root cause of child adversity



Source: Rhea Boyd, M.D.; Ellis, W. Dietz, W. A New Framework for Addressing Adverse Childhood and Community Experiences: The Building Community Resilience (BCR) Model. *Academic Pediatrics*. 17 (2017) pp. S86-S93.



# Community Leadership: Families as Experts



## Telehealth and Children of Color with Special Health Care Needs: Lessons from the Pandemic

EXECUTIVE SUMMARY



CHILDRENSPARTNERSHIP.ORG  
September 2022



# Community Leadership: Trusted Messengers are Key

## The San Diego Union-Tribune

**‘Promotoras’ playing role in vaccine outreach for Latino communities**  
They are familiar with residents and neighborhoods  
By Alexandra Mendoza  
Feb. 19, 2021 9:03 PM PT

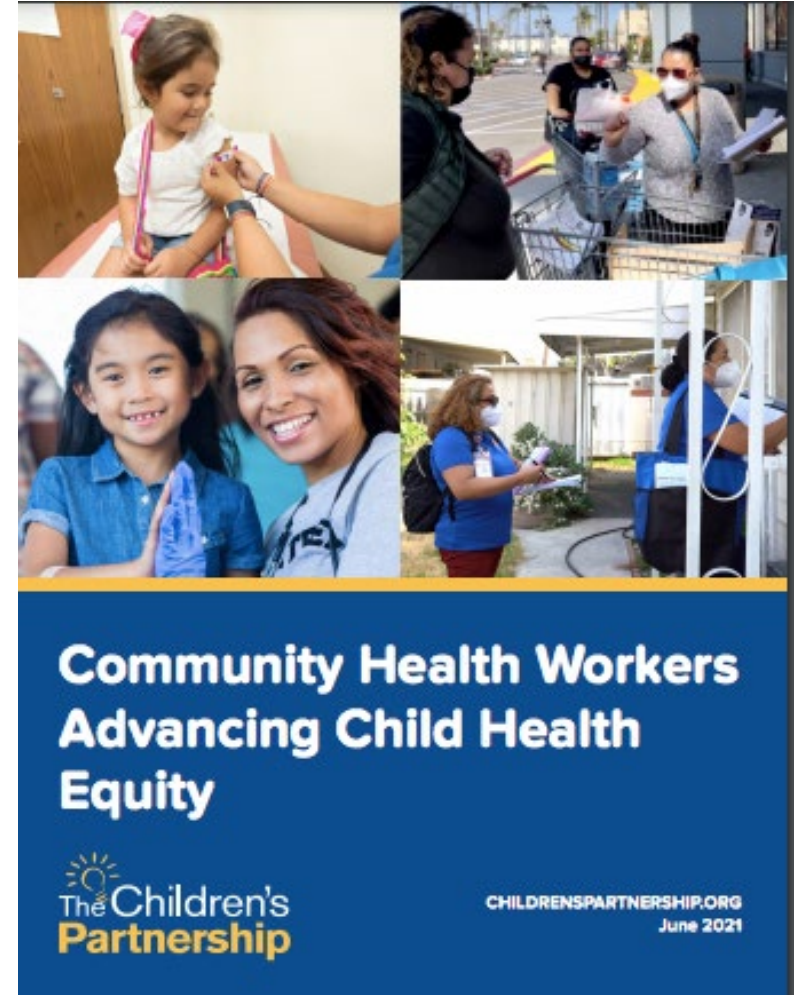




# A community health workforce includes...

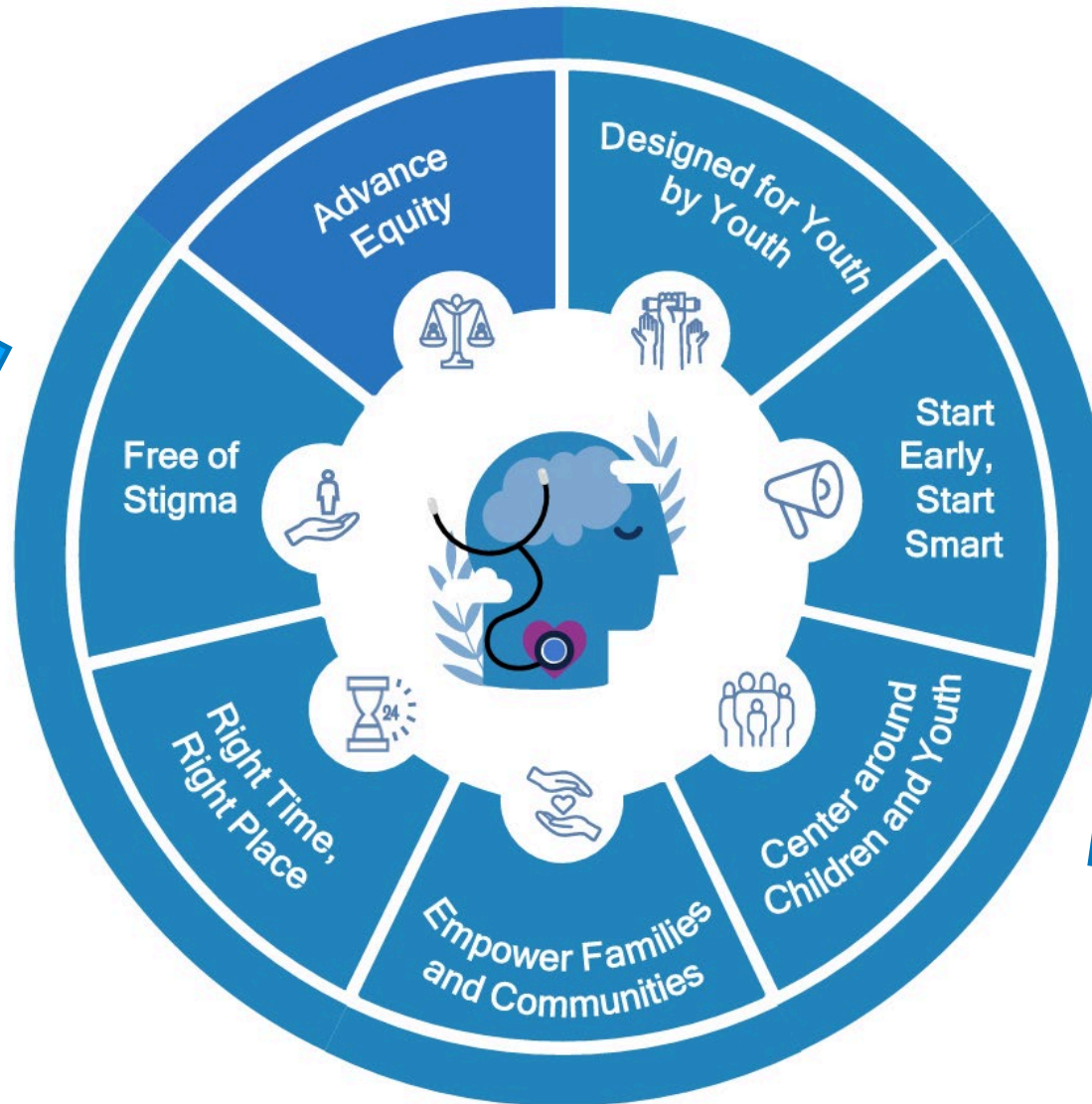
...people on the frontlines who protect and promote the health of their communities and reflect the communities they serve through shared race, ethnicity, culture, language, or life experience.

- Promotores
- Community health workers (CHWs)
- Community doulas
- Community health advocates
- Community health representatives
- Peer counselors
- Home visitors
- Navigators/navegantes
- And more!



# Children and Youth Behavioral Health Initiative

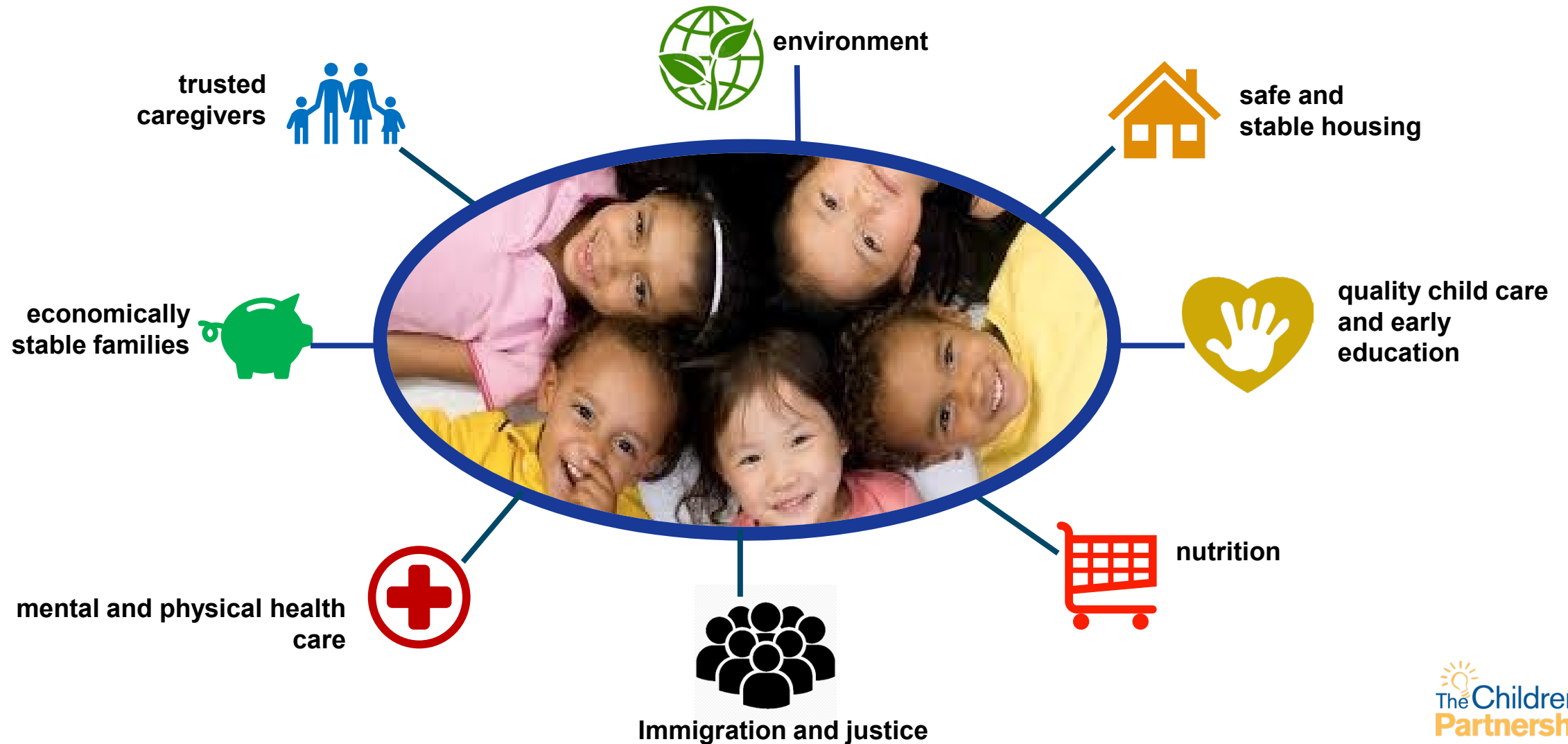
Dyadic  
Services



Youth  
Peer-to-Peer  
Programs

Community-  
Defined  
Practices

# A Whole Child Approach: Strength in Partnership





# THANK YOU!



---

**Mayra E Alvarez**  
[malvarez@childrenspartnership.org](mailto:malvarez@childrenspartnership.org)  
**g**

**@kidspartnership**  
**@mayraealvarez**





---

## **California's Trusted Medi-Cal Partner: Innovations Fostering an Anti-Racist Health Care System**

# Structural Competency to Address Structural Racism



- We have an obligation to our members to recognize how social issues affect healthcare so we can connect patients to the right resources and support when, where and how they need it.
- Structural racism is endemic and has greatly impacted all facets of society, including healthcare.
- To address systemic racism, we have to understand how racism and racial bias disproportionately impacts people of color – and confront it head on.
- We must also acknowledge & proactively work to help people with intersectional identities as they often face additional barriers to quality care. It is incumbent on us to acknowledge and work to address related needs holistically.

# The Importance of Data Driven Insights

*As one of the state's longest serving and most experience Medi-Cal plans, we are in a unique position to support activation through sharing population health data insights with CBOs. We're focused on providing data driven insights to improve individual and population health outcomes and experience. We do this through:*



**Improved Analytics Including Quantitative & Qualitative Data**



**Screening Individual Members for Social Needs**



**Measuring & Improving the Patient Experience**



**Empower Communities by Exchanging Insights and Data**





# Our Work in the Community

*In addition to data, we know we have to hear from the community on interventions. This is why we work with CBOs that themselves work with the communities we serve to develop evidence-based interventions known to reduce racial and ethnic disparities in care and outcomes.*



## Community Impact Councils & Advisory Committees

Setting up these programs to collaborate with the people who have lived experience in and are intimately connected with the communities we serve.



## Supporting Provider Enablement

Recognizing that providers serving our communities are resource-strapped, it is important to support providers to effectively address needs to improve quality.



## Community-Specific Programs & Partnerships

Focusing on culturally and community specific programs and partnerships, like our Community Connections Forums, Doula Services, CHWs/Promotores and more.



## Equity-Focused Value-Based Payment Structures

Developing these structures that support providers to enable wraparound equitable care for their patients.

# Health Net's Journey

*IHI Commenting on Health Net in their Payers & Health Equity Reaching Beyond Incentives and Penalties Articles:*

*“Saving dedicated space to improve their work as leaders — without the goal of doing a specific thing right now, but with the goal of developing the comfort and understanding of what it means to do anti-racism, equity-focused work in the day-to-day operations of a massive organization — is hard for a lot of organizations.” – Alex Anderson, IHI*

[https://www.ihl.org/communities/blogs/payers-and-health-equity-reaching-beyond-incentives-and-penalties?utm\\_campaign=tw&utm\\_medium=email&\\_hsmt=243673024&\\_hsenc=p2ANqtz--wtRRXXC93iffjUZ\\_0HS8OEjAryYmX35jxFv17uX6Q\\_LhaPkQPKzYFC-9-c75ZBYxrHZ79OCPhIzIlkzYxgi9LD8w&utm\\_content=243524861&utm\\_source=hs\\_email](https://www.ihl.org/communities/blogs/payers-and-health-equity-reaching-beyond-incentives-and-penalties?utm_campaign=tw&utm_medium=email&_hsmt=243673024&_hsenc=p2ANqtz--wtRRXXC93iffjUZ_0HS8OEjAryYmX35jxFv17uX6Q_LhaPkQPKzYFC-9-c75ZBYxrHZ79OCPhIzIlkzYxgi9LD8w&utm_content=243524861&utm_source=hs_email)

# Data as Power: Medi-Cal's Bold Vision for Whole Person Care

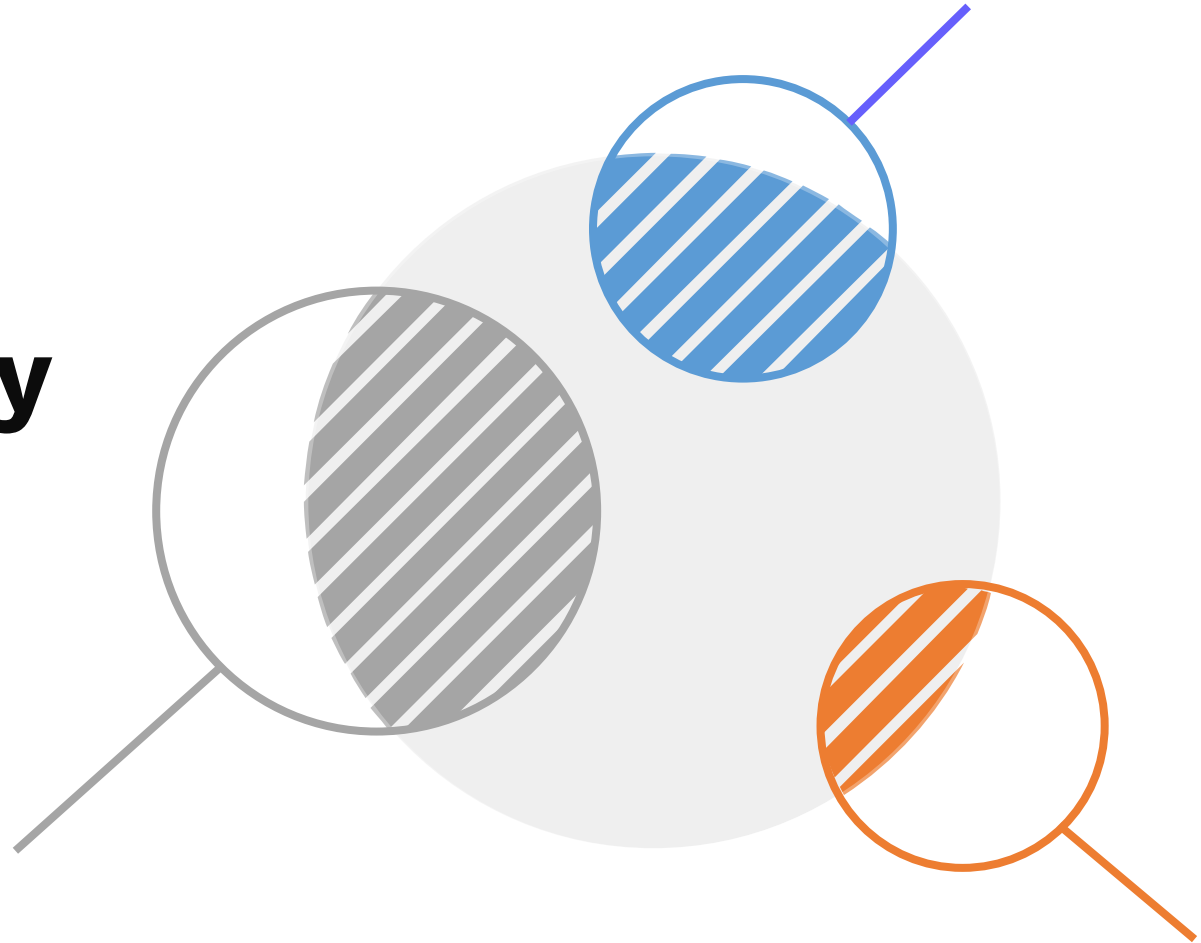
Palav Babaria, MD, MHS  
Chief Quality & Medical Officer  
Deputy Director, QPHM



**Quality and Population Health Management**

# Healthcare today is fragmented

With bits and pieces of data,  
we cannot see the full picture





# CalAIM Initiative

**CalAIM's bold Medi-Cal transformation expands on the traditional notion of "the health care system." It is much more than a doctor's office or hospital; it also includes community-based organizations and non-traditional providers that together can deliver equitable, whole-person care.**

## CalAIM Transformation Means:

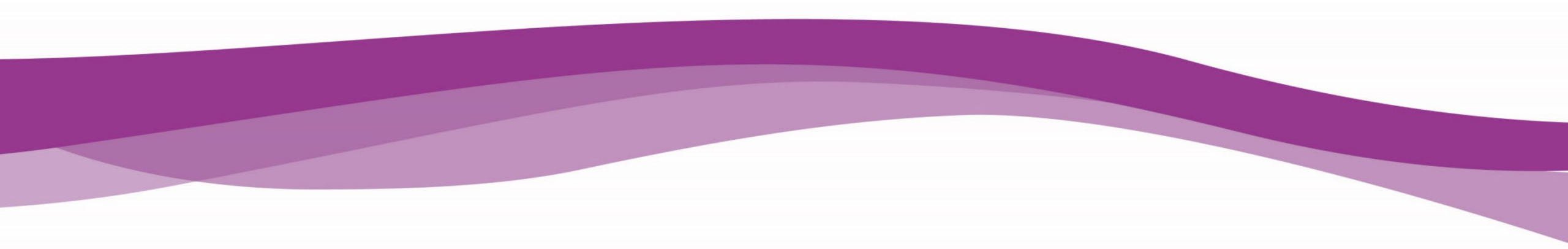
- » Meeting the needs of the whole person
- » Engaging health providers who are trusted and relatable
- » Expanding Community Supports and proactive upstream services
- » Promoting community engagement
- » Making the best use of partners and resources

# CalAIM Supports Californians' Ability to Stay Healthy in All Areas of Life

Everyone has a stake in a better Medi-Cal program; many of us know someone whose health depends on it.

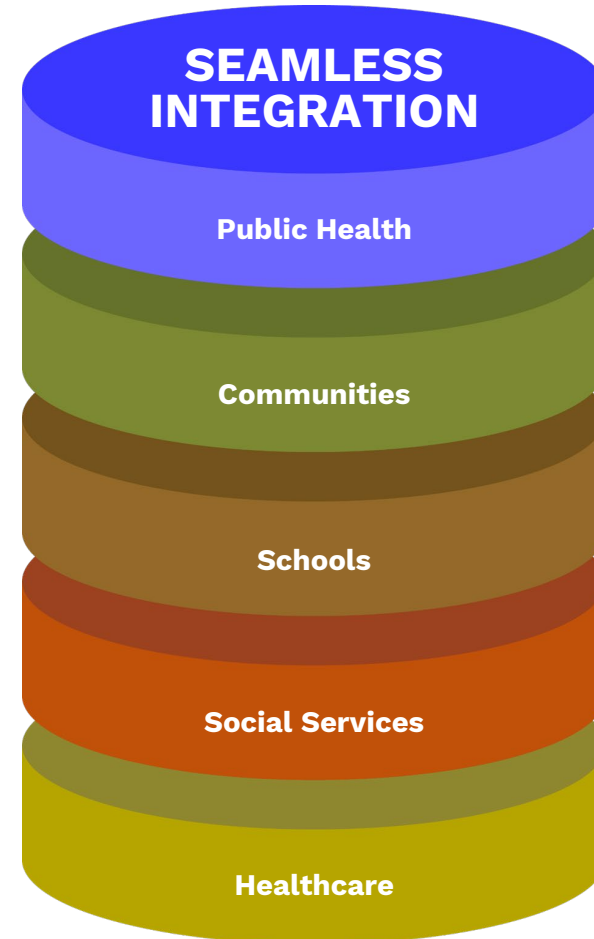
- » **Population Health.** One in three Californians are enrolled in Medi-Cal, with more than 65% of enrollees identifying as people of color
- » **Children & Youth.** Medi-Cal covers 50% of all births in California, with about two-thirds of children enrolled in Medi-Cal identifying as Black and Latino
- » **Complex Needs & Unmet Care.** More than two in three patient days in a California long-term care facility are covered by Medi-Cal
- » **Justice-Involved.** At least 80% of justice-involved individuals are eligible for Medi-Cal

**How do we put patients back in the driver's seat when it comes to their healthcare information?**



# The future of healthcare

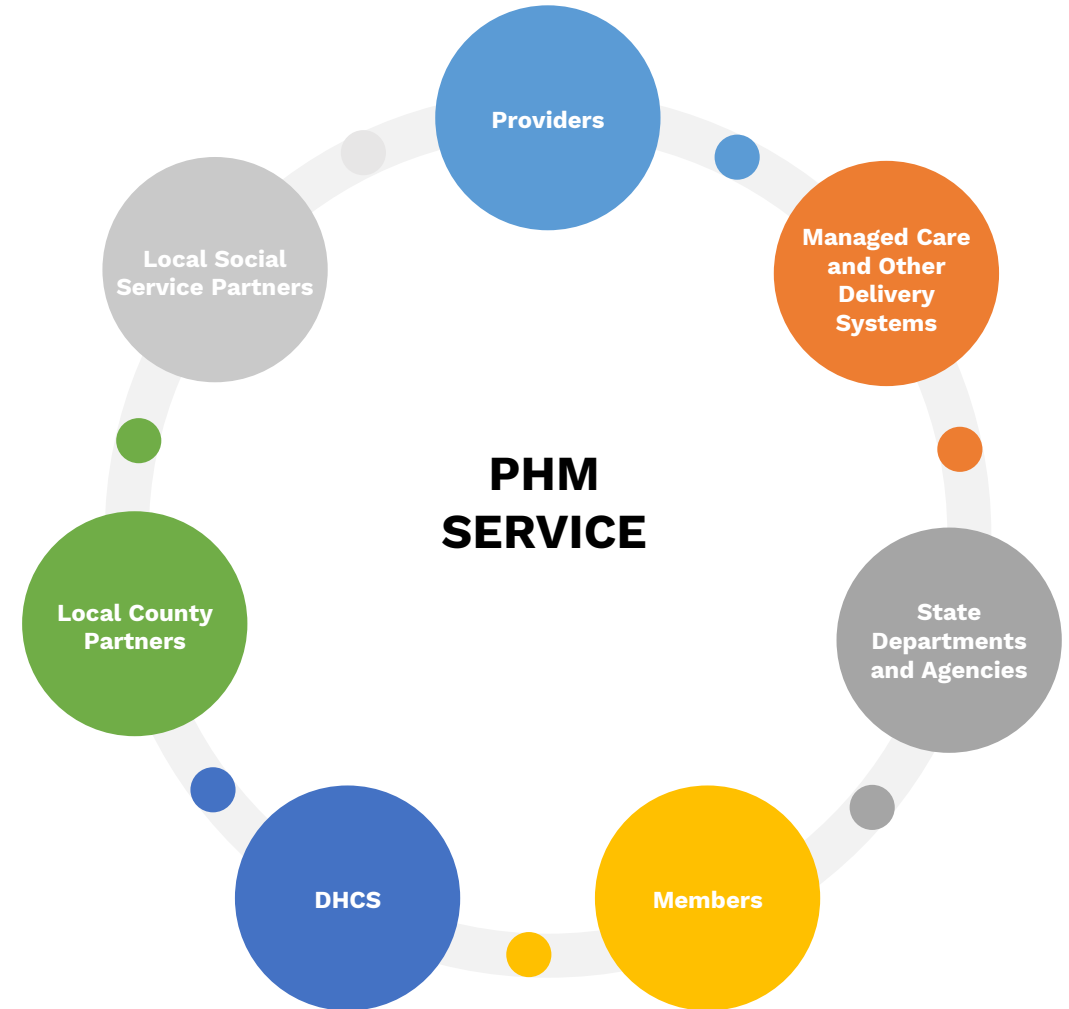
- » Breaking out of healthcare's four walls
- » DHCS' Population Health Management Service
  - » The PHM Service will aggregate, link, and provide access to a variety of data types and support key population health functions.



**PHM SERVICE:**

# Meeting the needs of diverse users

Allowing integrated access for all  
the parts of our healthcare system



# Member ownership and equity

Giving users health data  
autonomy looks like:

**01**

Easy access to  
see their data

**02**

Power to edit on  
this platform as  
needed

**03**

Owning the  
data about  
them

**04**

Power over how  
their data is used  
and shared

# Why is this so important?

## BOLD GOALS: 50x2025

### STATE LEVEL



Close racial/ethnic disparities in well-child visits and immunizations by 50%



Close maternity care disparity for Black and Native American persons by 50%



Improve maternal and adolescent depression screening by 50%



Improve follow up for mental health and substance use disorder by 50%



Ensure all health plans exceed the 50th percentile for all children's preventive care measures

**The time is Now.  
Questions?**





ITUP 27<sup>th</sup> Annual Conference • Feb. 6-7, 2023

# CULTIVATING AN EQUITABLE FUTURE OF HEALTH



## QUESTIONS?

# ITUP 27<sup>TH</sup> ANNUAL CONFERENCE

## Evaluations

Please complete the Conference evaluation at the end of the conference by scanning the QR code below!

