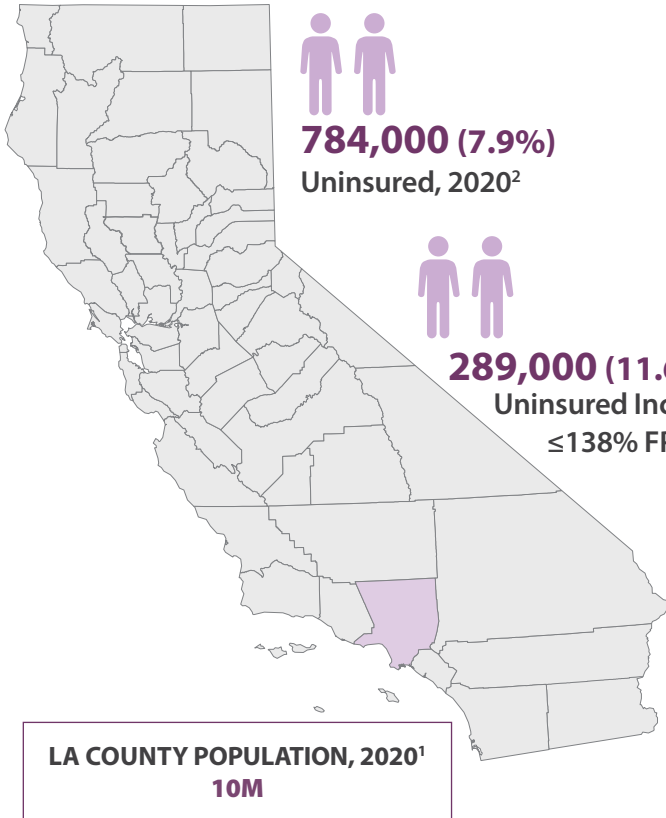


**CALIFORNIA TOTAL POPULATION, 2020<sup>1</sup>: 39.5M**

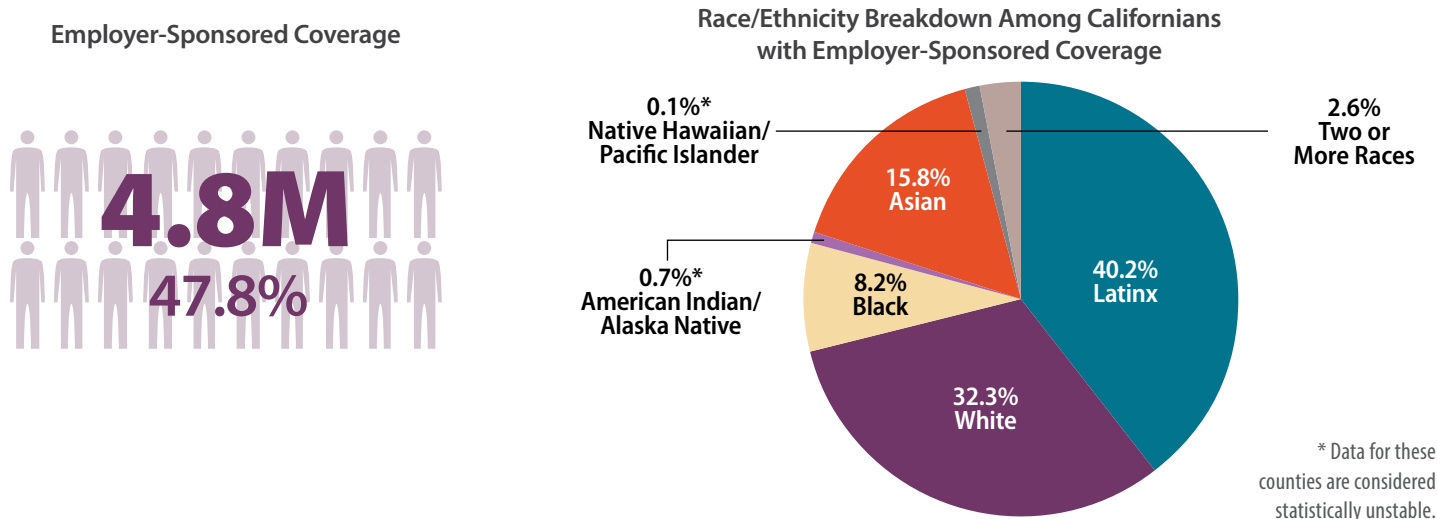


**FIGURE 1. Race/Ethnicity Among the Uninsured, 2020<sup>2</sup>**

Percent by Race	County Population	Insured	Uninsured
Latinx	50.0%	88.6%	11.4%
White	26.2%	96.4%	3.6%
Black	7.9%*	94.1%*	5.9%*
American Indian/ Alaska Native	0.4%*	100%*	-
Asian	13.5%	95.3%	4.7%
Native Hawaiian/ Pacific Islander	0.1%*	79.5%*	-
Two or More Races	2.1%	94.3%*	5.7%

(-) Notes a value unavailable due to data masking.  
\* Data for these counties are considered statistically unstable.

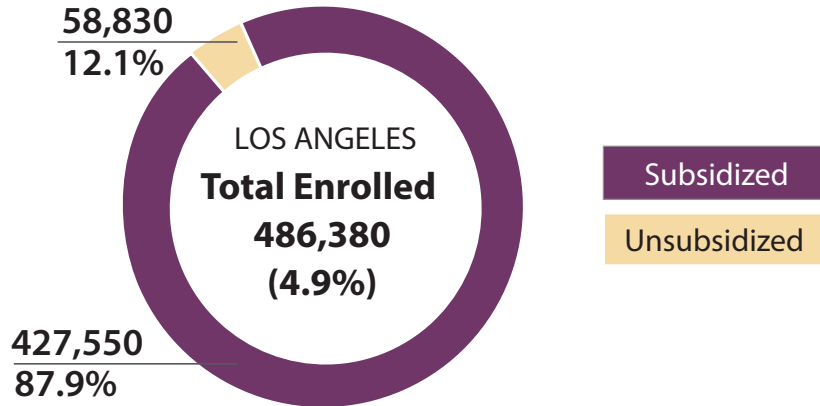
**FIGURE 2. Employer-Sponsored Coverage, 2020<sup>2</sup>**



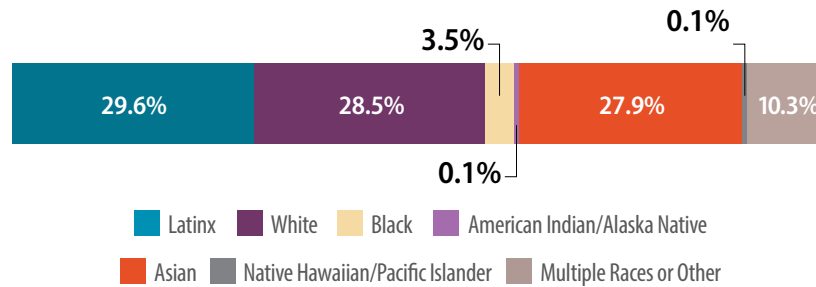


## COVERED CALIFORNIA

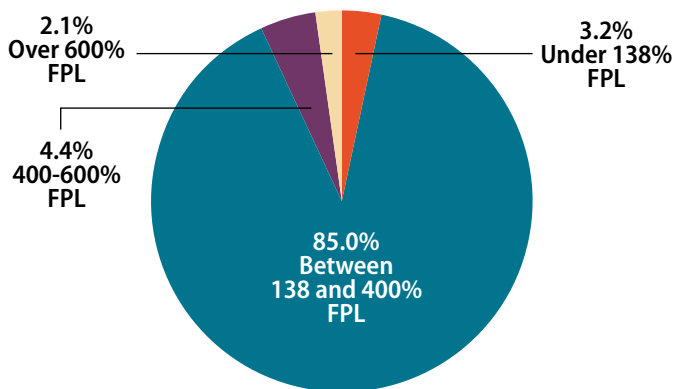
**FIGURE 3.** Percent of LA County Population Enrolled in Covered California, December 2021<sup>3</sup>



**FIGURE 4.** Covered California Enrollment by Race/Ethnicity, December 2021<sup>3</sup>



**FIGURE 5.** Covered California Enrollment by FPL, December 2021<sup>3</sup>



**FIGURE 6.** Covered California Enrollment by Health Plan, December 2021<sup>3</sup>

Anthem Blue Cross	18,160
Health Net	63,150
Kaiser Permanente	125,890
Blue Shield	135,950
Molina Healthcare	13,150
L.A. Care Health Plan	101,630
Oscar Health Plan	28,450
Sharp Health Plan	10

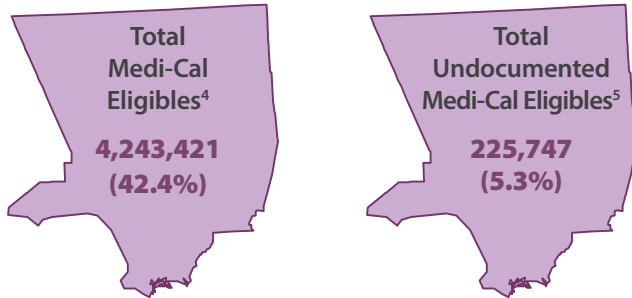
Enrollments where the FPL of the member is not known are not included here.

Covered California's privacy policy rounds all figures to the nearest 10, as a result, grand totals shown may be slightly different from the totals in the individual plan data

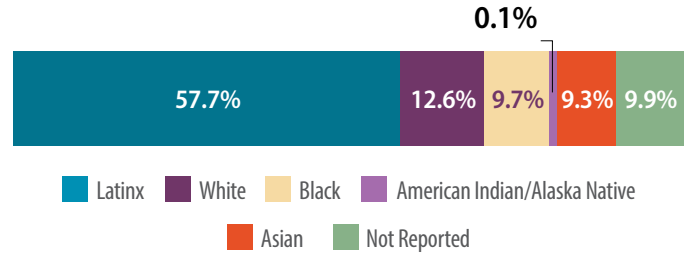


## MEDI-CAL

**FIGURE 7. Medi-Cal Enrollment, January 2022**



**FIGURE 8. Medi-Cal Enrollment, by Race/Ethnicity, January 2022<sup>6</sup>**



**FIGURE 9. Medi-Cal Enrollment by Managed Care and Fee-for-Service (FFS), January 2022<sup>7</sup>**

<b>Total Managed Care Enrollment</b>	<b>3,386,561</b>	
<b>Enrollment by Managed Care Plans</b>	<b>LA Care</b>	<b>Health Net</b>
	2,366,946	1,019,615
<b>Medi-Cal FFS</b>	<b>856,860</b>	

**FIGURE 10. Expected [CalAIM](#) Implementation Start Date**

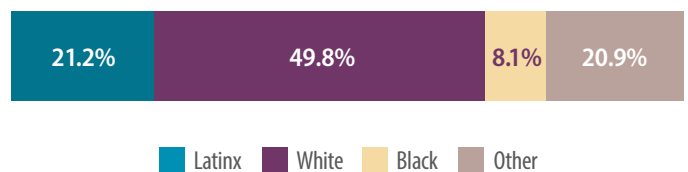


## MEDICARE

**FIGURE 11. Medicare Enrollment and Percent of Counties' Population, 2020<sup>4,8</sup>**

<b>Medicare</b>	<b>1,389,045 (13.9%)</b>
<b>Medicare Advantage</b>	<b>822,789 (59.2%)</b>
<b>FFS Medicare</b>	<b>566,256 (40.8%)</b>
<b>Dual Eligible**</b>	<b>496,561 (35.7%)</b>

**FIGURE 12. Medicare Enrollment, by Race/Ethnicity, 2020<sup>8</sup>**



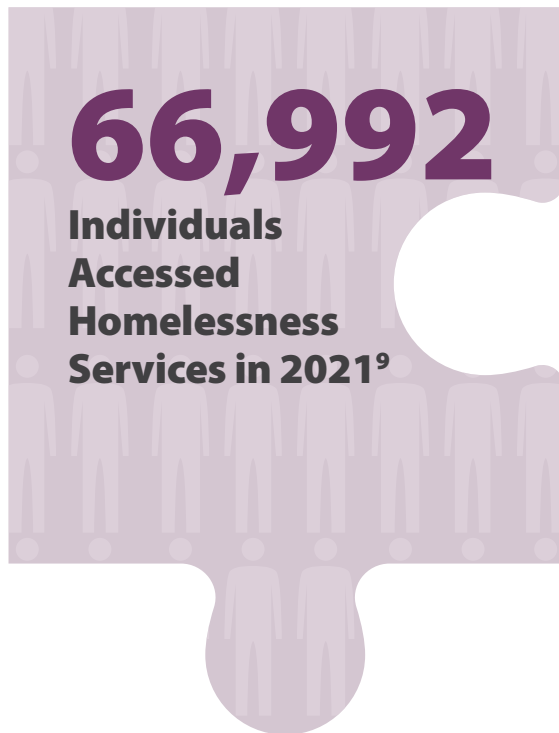
\*\*Dual Eligibles are those eligible for Medicare and Medi-Cal, also referred to as Medi Medis.



## DATA SNAPSHOT: SOCIAL DRIVERS OF HEALTH

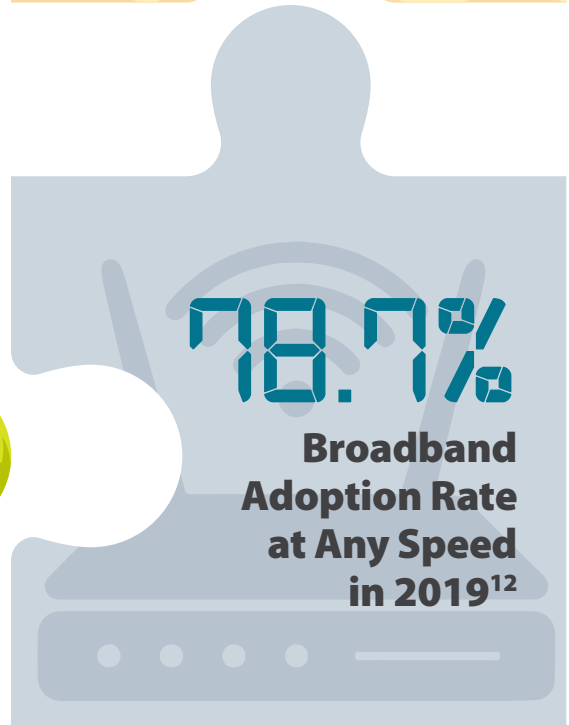
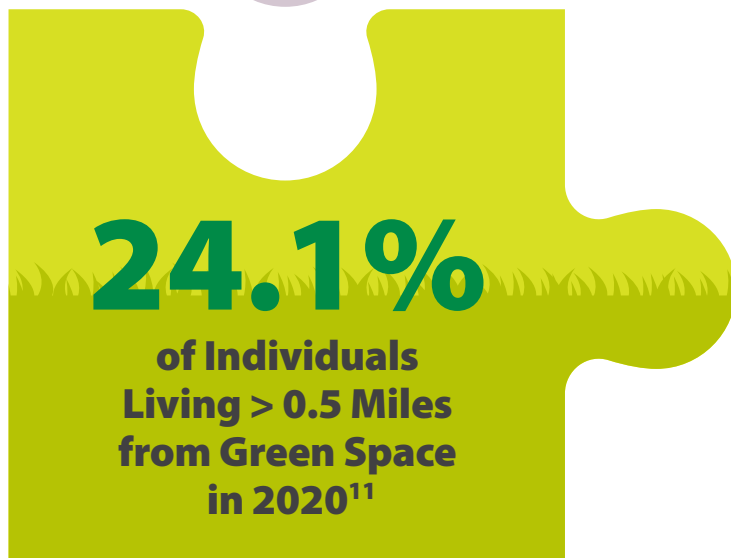
Social Drivers of Health (SDoH), also known as Social Determinants of Health, refer to the conditions in environments where people are born, live, learn, work, play, worship, and age that influence their health risks and overall wellbeing. Some of these drivers include access to safe housing, nutritious food, parks and green space, and even broadband and internet connectivity, all of which impact the ability of and opportunity for Californians to live their healthiest lives.

Housing Assistance



Food Security

Access to Green Space



Broadband Access



## NOTES

All decimals rounded to nearest tenth.

1. United States Census Bureau, [2020 Census Redistricting Data](#), Accessed: March 16, 2022.
2. UCLA Center for Health Policy Research, [2020 California Health Interview Survey](#), Public Use File, Accessed: March 7, 2022.
3. Covered California, December 2021 [Active Member Profile](#), Accessed: March 31, 2022.
4. Department of Health Care Services, [Medi-Cal Certified Eligibles Data Table by County and Dual Status](#), February 2022, Accessed: March, 31 2022.
5. Department of Health Care Services, [Medi-Cal Certified Eligibles Data Table by County and Aid Code Group](#), February 2022, Accessed: March 31, 2022.
6. Department of Health Care Services, [Medi-Cal Certified Eligibles Data Table Race/Ethnicity and Age](#), February 2022, Accessed: March 31, 2022.
7. Department of Health Care Services, [Medi-Cal Managed Care Enrollment Report](#), February 2022, Accessed: March 31, 2022.
8. Centers for Medicare and Medicaid Services, [Medicare Geographic Variation - by National, State & County](#), 2020, Public Use File, Accessed: March 31, 2022
9. California Interagency Council on Homelessness, [Homeless Data Integration System](#) Public Use File, 2021, Accessed: March 28, 2022.
10. California Department of Social Services, [CalFresh Data Dashboard](#), 2021, Accessed: March 28, 2022.
11. Let's Get Healthy California, Data Dashboard for Aging, [Strategy C: Outdoor & Community Spaces for All Ages](#), 2020, Accessed: March 28, 2022.
12. California Public Utilities Commission, [EOY 2019 CA Fixed Broadband Adoptions by Population](#), Accessed: March 28, 2022.

### About ITUP

ITUP is an independent, nonprofit, health policy institute that has been a central voice in the California health landscape for more than two decades. ITUP serves as a trusted expert, grounded in statewide and regional connections with a network of policymakers, health care leaders, and stakeholders. The mission of ITUP is to promote innovative and workable policy solutions that expand health care access and improve the health of all Californians.

ITUP is generously supported by the following funders:

- California Community Foundation
- California Health Care Foundation
- The California Endowment
- The California Wellness Foundation



@ITUP



@InsuretheUninsuredProject



@InsuretheUninsuredProject



www.itup.org