

CALIFORNIA TOTAL POPULATION: 39.5M¹

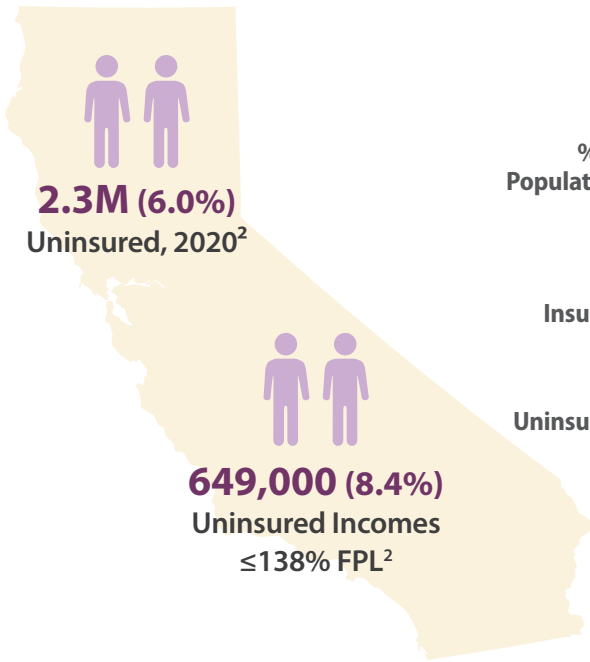


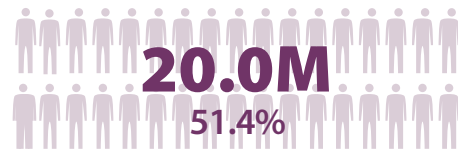
FIGURE 1. California Population and Uninsured by Race, 2020²

	Latinx	White	Black	AI/AN	Asian	NH/PI	2+
% of Population	39.0%	36.9%	5.7%	0.5%	15.4%	0.3%	2.2%
Insured	90.3%	97.1%	95.6%	95.7%	95.4%	91.4%	95.6%
Uninsured	9.7%	2.9%	4.4%	4.3%	4.6%	8.6%	4.4%

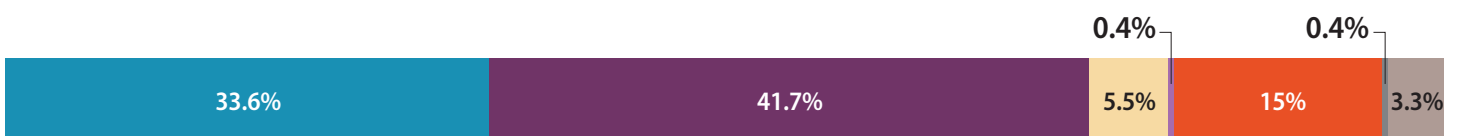
AI/AN=American Indian/Alaska Native | NH/PI = Native Hawaiian/Pacific Islander | 2+ = Two or More Races
* Data for these counties are considered statistically unstable. | (-) Notes a value unavailable due to data masking.

FIGURE 2. Employee Sponsored Coverage in California, 2020²

Percent of Californians with Employer-Sponsored Coverage



Race/Ethnicity Breakdown Among Californians with Employer-Sponsored Coverage



Latinx White Black American Indian/Alaska Native Asian Native Hawaiian/Pacific Islander Multiple Races or Other

Covered California's privacy policy rounds all figures to the nearest 10. As a result, grand totals shown may be slightly different from the totals in the individual plan data.

COVERED CALIFORNIA

FIGURE 3. Population Enrolled in Covered California, June 2021³

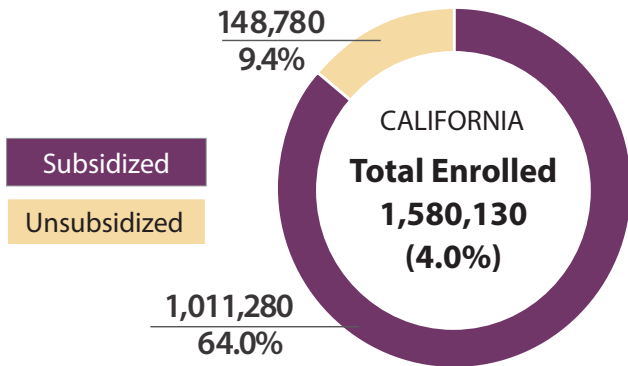
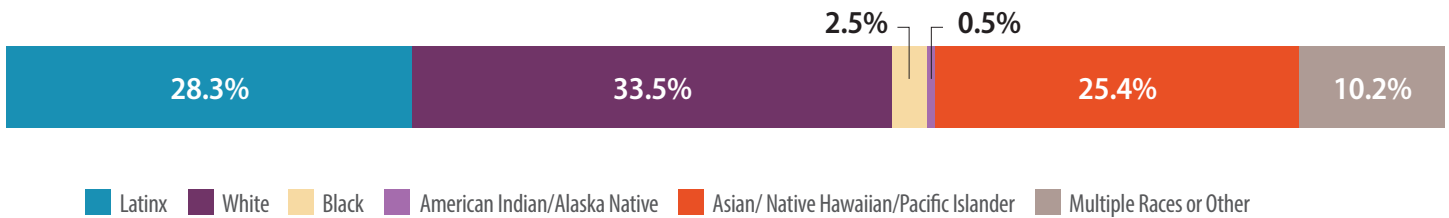


FIGURE 4. Covered California Enrollment by Federal Poverty Level (FPL), June 2021³

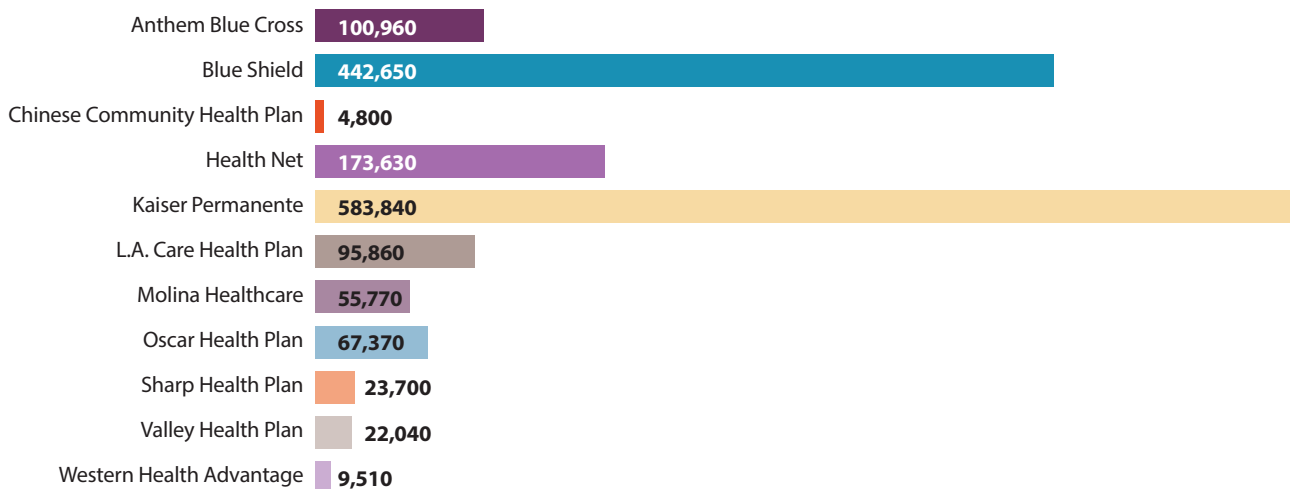
Under 138% FPL	Between 138% and 400% FPL	Between 400% and 600% FPL	Over 600% FPL
2.4%	91.9%	4.6%	90.0%

FIGURE 5. Covered California Enrollment by Race, June 2021³



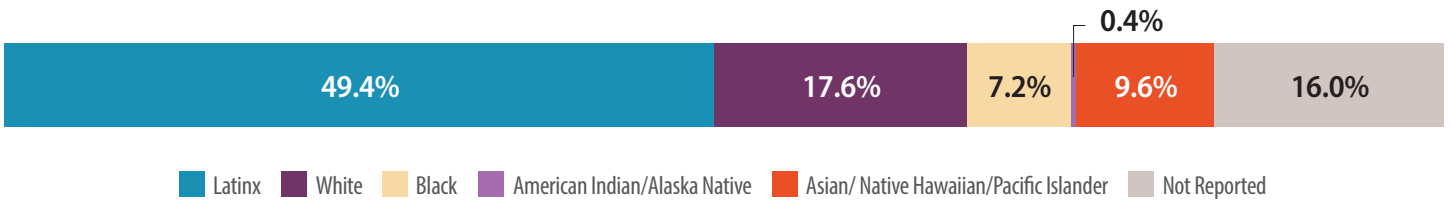
Covered California's privacy policy rounds all figures to the nearest 10. As a result, grand totals shown may be slightly different from the totals in the individual plan data.

FIGURE 6. Covered California Enrollment by Health Plan, June 2021³



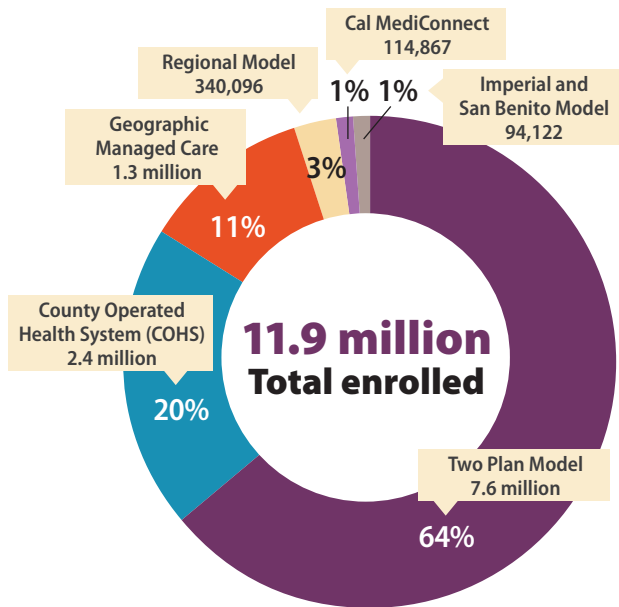
MEDI-CAL

FIGURE 7. Race/Ethnicity Among Medi-Cal Enrollees, October 2021⁶

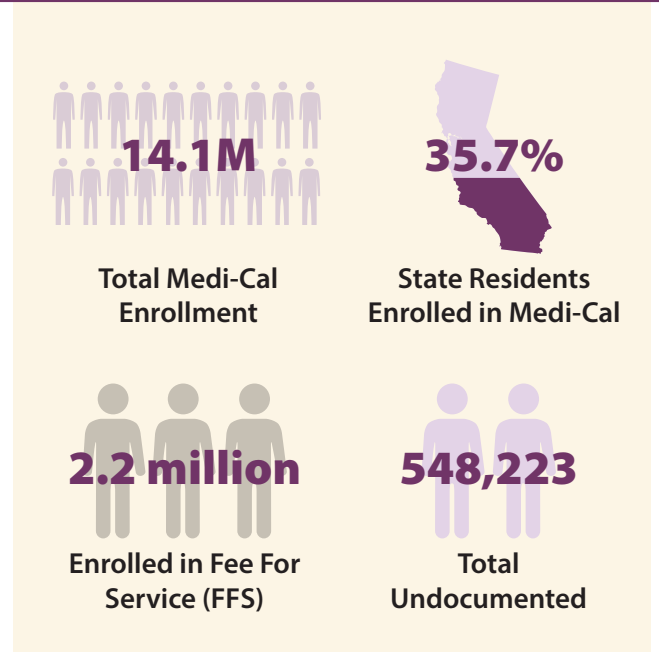


Covered California's privacy policy rounds all figures to the nearest 10. As a result, grand totals shown may be slightly different from the totals in the individual plan data.

FIGURE 8. Medi-Cal Enrollment by Managed Care Model and Fee-for-Service (FFS), October 2021⁷



MEDI-CAL FAST FACTS^{4, 5, 7}



MEDICARE

FIGURE 9. Medicare Enrollment and Percent of State's Population, December 2020⁷

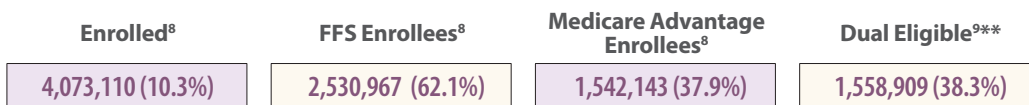
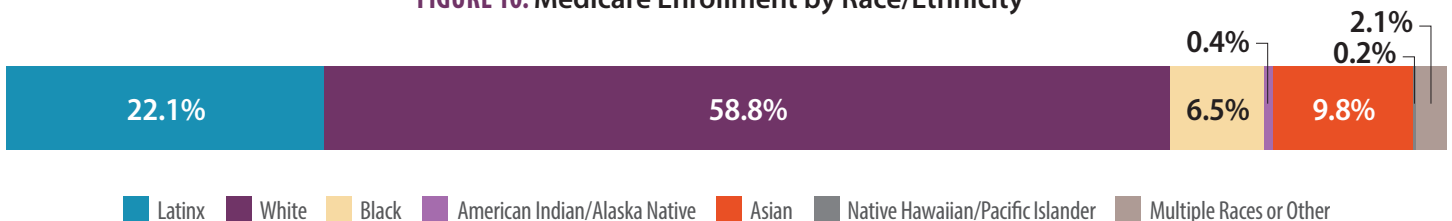


FIGURE 10. Medicare Enrollment by Race/Ethnicity⁹



Covered California's privacy policy rounds all figures to the nearest 10. As a result, grand totals shown may be slightly different from the totals in the individual plan data.

NOTES

All decimals rounded to nearest tenth.

1. United States Census Bureau, [2019 ACS 1 Year Demographic and Housing Estimates](#), Accessed: July 20, 2021.
2. UCLA Center for Health Policy Research, [2020 California Health Interview Survey](#), Public Use File, Accessed: December 4, 2021.
3. Covered California, June 2021, [Active Member Profile](#), Accessed: December 4, 2021
4. Department of Health Care Services, [Medi-Cal Certified Eligibles Data Table by County](#), October 2021, Accessed: December 4, 2021.
5. Department of Health Care Services, [Medi-Cal Certified Eligibles Data Table by County and Aid Code Group](#), October 2021, Accessed: December 4, 2021.
6. Department of Health Care Services, [Medi-Cal Certified Eligibles Data Table Race/Ethnicity and Age](#), June 2021, Accessed: December 4, 2021.
7. Department of Health Care Services, [Medi-Cal Managed Care Enrollment Report](#), October 2021, Accessed: December 4, 2021.
8. Centers for Medicare and Medicaid Services, [2019 State/County Table - All Beneficiaries](#), Public Use File, Accessed: December 4, 2021.
9. UCLA Center for Health Policy Research, [2020 California Health Interview Survey](#), Public Use File, Accessed: December 4, 2021.

About ITUP

ITUP is an independent, nonprofit, health policy institute that has been a central voice in the California health care and health reform landscape for more than two decades. ITUP serves as a trusted expert, grounded in statewide and regional connections with a network of policymakers, health care leaders, and stakeholders. The mission of ITUP is to promote innovative and workable policy solutions that expand health care access and improve the health of all Californians.

ITUP is generously supported by the following funders:

- California Community Foundation
- California Health Care Foundation
- The California Endowment
- The California Wellness Foundation



@ITUP



@InsuretheUninsuredProject



@InsuretheUninsuredProject



www.itup.org