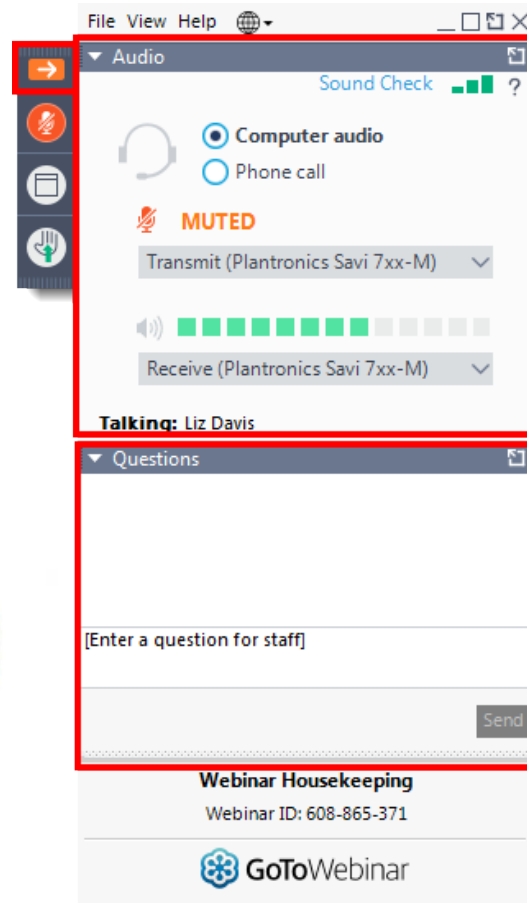
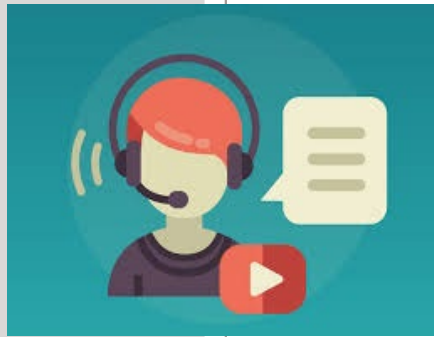

L.A. Health Collaborative

The Future of Health: CalAIM Implementation and Beyond



October 28, 2021

Welcome to the Webinar!



Your Participation

Open and close your control panel

Join audio:

- Choose **Mic & Speakers** to use VoIP
- Choose **Telephone** and dial using the information provided

Submit questions and comments at any time via the Questions panel

Reminder: Today's presentation is being recorded and will be available within 48 hours.

ITUP Mission / Vision



Mission

ITUP's mission is to promote innovative and workable policy solutions that expand health care access and improve the health of all Californians. ITUP implements its mission through policy-focused research and broad-based stakeholder engagement.

Vision

ITUP believes that all Californians should have a fair opportunity to live their healthiest lives.

ITUP Values



ITUP Seeks a Health Care System that is:

- Universal** – All Californians are eligible for comprehensive health coverage and services, including primary, specialty, behavioral, oral, and vision health services, as well as services that address the social determinants of health.
- Equitable** – All Californians receive health care coverage, treatment, and services that address the social determinants of health regardless of health status, age, ability, income, language, race, ethnicity, gender identity, sexual orientation, immigration status, and geographic region.
- Accessible** – All Californians have access to coverage options and services that are available, timely, and appropriate.
- Effective** – Health, health care, and related services that address the social determinants of health are person-centered, value-based, coordinated, and high-quality.
- Affordable** – Coverage and services are affordable for consumers at the point of purchase and care; and, at the health system level for public and private purchasers.



LA HEALTH COLLABORATIVE

The Future of Health: CalAIM Implementation and Beyond

AGENDA

Thursday, October 28, 2021

1:00 p.m.- 3:00 p.m.

GoToWebinar Link:

<https://attendee.gotowebinar.com/register/7464889423418126348>

1:00 – 1:10 p.m.	Welcome and Introductions
1:10 – 2:10 p.m. <i>Includes Q&A</i>	CalAIM in Los Angeles County Clemens Hong, M.D., M.P.H. , Acting Director, Community Programs Lead, COVID-19 Testing County of Los Angeles at Los Angeles County Department of Health Services Cynthia Carmona, M.P.A. , Senior Director, Safety Net Initiatives, L.A. Care Health Plan Karen Richmond , Regional Vice President of Medi-Cal, Health Net, LLC Katie Heidorn, M.P.A. , Executive Director, Insure the Uninsured Project (Moderator)
2:10-2:50 p.m. <i>Includes Q&A</i>	Community Supports: How to Make CalAIM Meaningful Richard Ayoub , Executive Director, Project Angel Food Amy Turk, LCSW , Chief Executive Officer, Downtown Women's Center Katie Heidorn, M.P.A. , Executive Director, Insure the Uninsured Project (Moderator)
2:50 – 3:00 p.m.	Takeaways and Wrap Up
3:00 p.m.	Adjourn

Today's Agenda

CalAIM in Los Angeles County

Cynthia Carmona, M.P.A.

Senior Director, Safety Net Initiatives, L.A. Care Health Plan

Karen Richmond

Regional Vice President of Medi-Cal, Health Net, LLC

Clemens Hong, M.D., M.P.H.

Acting Director, Community Programs Lead, COVID-19 Testing County of Los Angeles at Los Angeles County Department of Health Services



California Advancing and Innovating Medi-Cal (CalAIM): Enhanced Care Management (ECM) & In Lieu of Services (ILOS)

Insure the Uninsured Project (ITUP): L.A. Health Collaborative

October 28, 2021

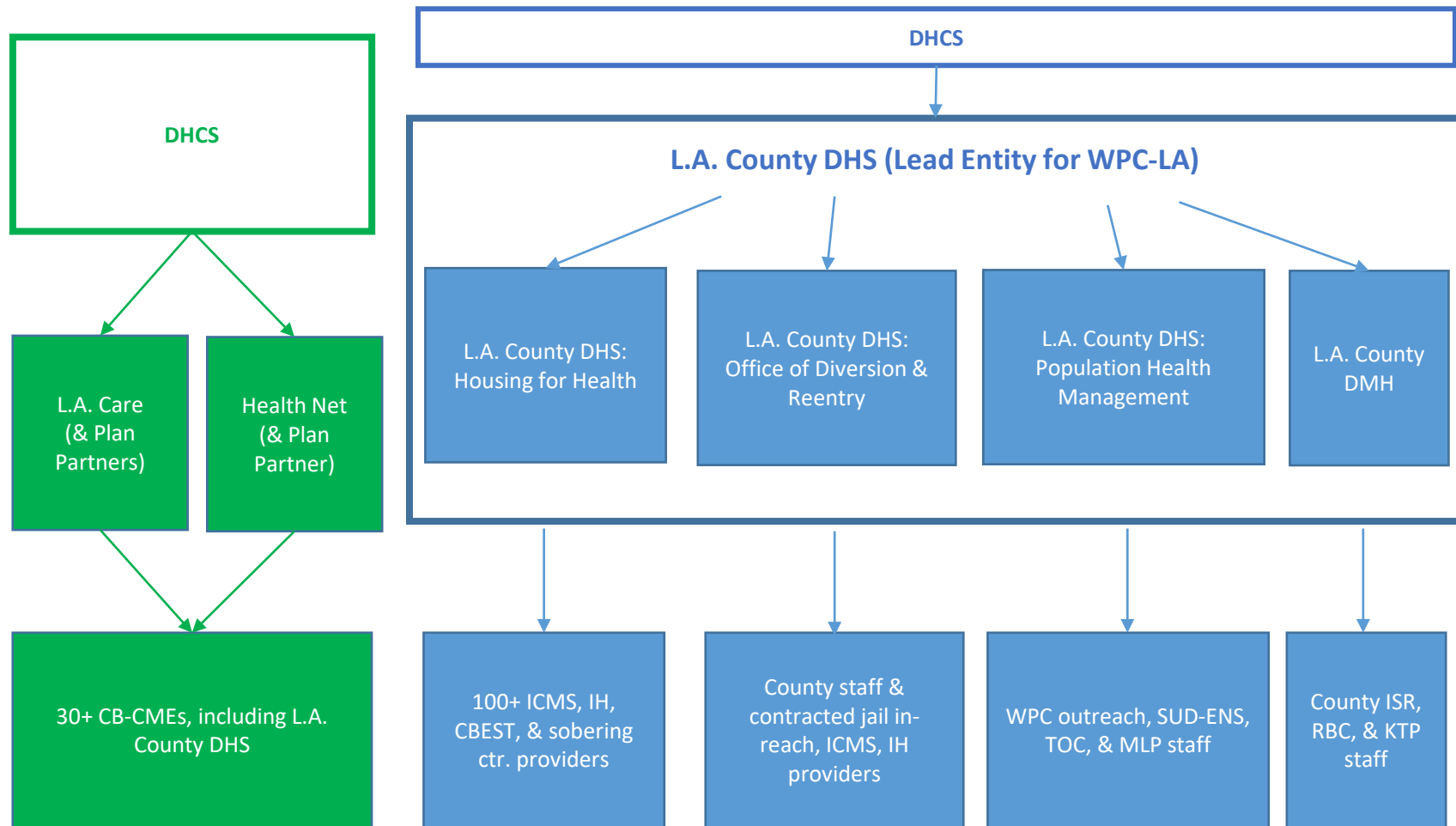
L.A. Care Health Plan | Health Net, Inc | L.A. County

Cynthia Carmona
L.A. Care Health Plan
Senior Director, Safety
Net Initiatives

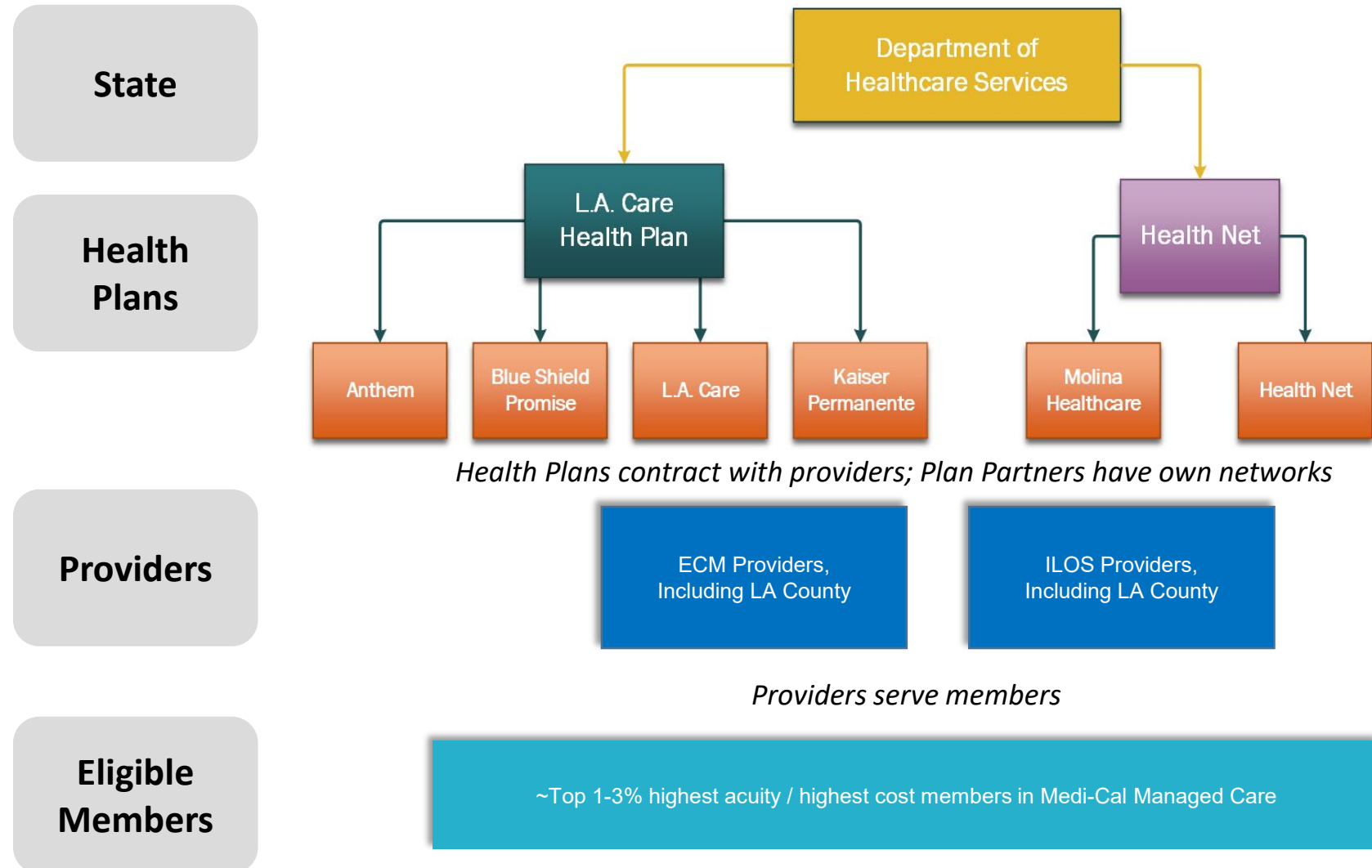
Karen Richmond
Health Net
Regional Vice President,
Medi-Cal

Clemens Hong, MD MPH
L.A. County DHS
Acting Director,
Community Programs

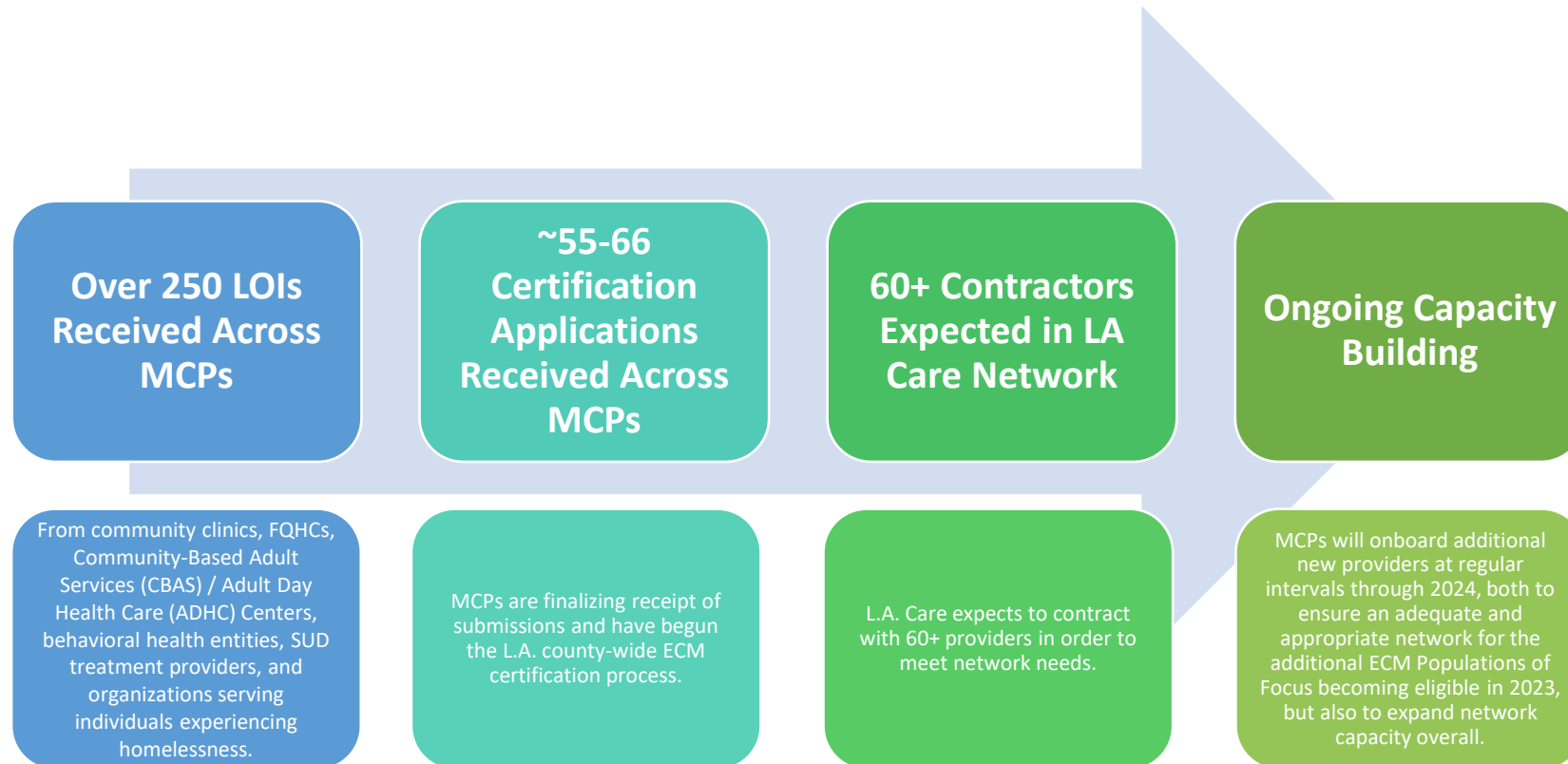
Current State: HHP and WPC-LA



Future State: ECM and ILOS



ECM Network Development



ILOS Selections by L.A. County Managed Care Plan

MCPs	Selected ILOS for January 2022 Launch
Anthem Blue Cross	<ul style="list-style-type: none">• Asthma Remediation• Environmental Accessibility Adaptations (Home Modifications)• Housing Deposits• Housing Tenancy and Sustaining Services• Housing Transition Navigation Services• Meals/Medically Tailored Meals• Recuperative Care (Medical Respite)
Blue Shield Promise	<ul style="list-style-type: none">• Environmental Accessibility Adaptations (Home Modifications)• Housing Deposits• Housing Tenancy and Sustaining Services• Housing Transition Navigation Services• Meals/Medically Tailored Meals• Personal Care and Homemaker Services• Recuperative Care (Medical Respite)• Respite Services• Short-term Post-Hospitalization Housing
Health Net	<ul style="list-style-type: none">• Asthma Remediation• Housing Transition Navigation Services• Housing Tenancy and Sustaining Services• Meals/Medically Tailored Meals• Recuperative Care (Medical Respite)• Sobering Centers

ILOS Selections by L.A. County Managed Care Plan Cont.

MCPs	Selected ILOS for January 2022 Launch
Kaiser Permanente	<ul style="list-style-type: none">• Housing Transition Navigation Services• Housing Tenancy and Sustaining Services• Meals/Medically Tailored Meals• Recuperative Care (Medical Respite)
L.A. Care Health Plan	<ul style="list-style-type: none">• Housing Transition Navigation Services• Housing Tenancy and Sustaining Services• Meals/Medically Tailored Meals• Recuperative Care (Medical Respite)
Molina Healthcare of California	<ul style="list-style-type: none">• Housing Transition Navigation Services• Housing Tenancy and Sustaining Services• Meals/Medically Tailored Meals• Recuperative Care (Medical Respite)• Sobering Centers

L.A. Care is working with DHCS on policies and procedures to ensure:

- Adequate member communications and education
- Access to those services offered by Plan Partners that are not offered by L.A. Care

MCPs are coordinating:

- Provider selection & certification process
- Provider training, TA, and capacity-building strategy

ILOS Network Development



CalAIM Incentive Fund

- The State has allocated \$300 million statewide to fund infrastructure and capacity building in the ECM and Community Supports programs. LA County has the opportunity to earn over \$150 million for this purpose.

Domains include: Infrastructure (20%), ECM Capacity Building (20%), and Community Supports Capacity Building (20%)

Plans will be able to propose where to spend the remaining 30% of their Incentive Fund allocation.

Plans are required to submit their Incentive Fund plans by mid-December 2021.

ECM & ILOS Guidance & Requirements

- ECM & ILOS requirements that are in process or ***not final/unknown*** include the following:
 - ECM Staffing requirements & caseload
 - ECM eligible member count
 - ECM & ILOS Reporting requirements
 - ECM & ILOS Data sharing & authorization requirements
 - ECM & ILOS Training requirements
- DHCS regularly updates their guidance on their website.
<https://www.dhcs.ca.gov/enhancedcaremanagementandinlieuofservices>

Overview - County Approach to CalAIM Transition

- Work in close partnership with DHCS & Health Plans to sustainably bring Medicaid dollars to critical services, including optimizing ECM/ILOS implementation
- Maximize enrollment in 50+ Medicaid Expansion & Global Payment Program revenue to support care for “uninsured”
- Braid funding from PATH and non-Medicaid sources to sustain and grow high-value services for Persons Experiencing Homelessness & Justice Involved populations
- Continue to drive value-driven innovation in preparation for Medicaid benefit expansion – e.g. MLTSS

County Programs Continuing Through All Health Plans on January 1, 2022

Health Homes
Program

Some WPC Care
Coordination
Programs

Intensive Case
Management
Services

Tenancy
Sustaining
Services

Recuperative
Care*

* Currently limited to post-acute population

WPC-Supported County Programs Continuing Through Some Health Plans on January 1, 2022

LA County will extend existing programs through other funding in 2022 when not included by Health Plans

Post-
Hospitalization
Interim Housing

In Home Care
Giver Support
Services

Housing
Deposits

Home
Modifications

Personal Care &
Homemaker
Services

Sobering Center

Yellow Highlight = programs that are mapped to Community Supports

WPC-Supported County Programs Not Continuing Through Health Plans on January 1, 2022

LA County will extend most programs through other funding in 2022

Enhanced Residential
Care (e.g. Board &
Care support)

Day Habilitation
Program

Multidisciplinary
Street Outreach
Teams

Benefits Advocacy

Opioid Overdose
Education and
Naloxone Distribution
Program

Medical Legal and
Community
Partnerships Program

DMH Enhanced Care
Coordination
Program

Yellow Highlight = programs that are mapped to Community Supports

WPC-Supported County Programs Transitioning to Primary Care/ECM on January 1, 2022

Substance Use
Disorder Engagement
Navigation and
Support

Transitions of Care

Challenges in L.A. County

L.A. County Scale

WPC Transition
(scope &
complexity)

Workforce

Multiple Initiatives

Funding
Uncertainty

Potential for
disintegration
through Managed
Care

Insufficient
investment

Delays in Adoption
of Community
Supports

Opportunities in L.A. County

More intensive services
for members

Stronger MCP
connections to non-
traditional providers

Better infrastructure to
serve the entire delivery
system

Additional funds to braid
into current
environment

Support equitable
access to coordinated
care for County
residents

Work towards a more
integrated health
delivery system

Provide full continuum
of services to justice-
involved, PEH, & people
at risk for
institutionalization

Increase Medicaid
resources to support
County
residents/priorities

THANK
YOU!

Questions?

Cynthia Carmona, M.P.A.

Senior Director, Safety Net Initiatives, L.A. Care Health Plan

Karen Richmond

Regional Vice President of Medi-Cal, Health Net, LLC

Clemens Hong, M.D., M.P.H.

Acting Director, Community Programs Lead, COVID-19 Testing County of Los Angeles at Los Angeles County Department of Health Services

Community Supports: How to Make CalAIM Meaningful

Richard Ayoub

Executive Director, Project Angel Food

Amy Turk, L.C.S.W.

Chief Executive Officer, Downtown Women's Center

IN LIEU OF SERVICES

How to Make Cal AIM Meaningful



PROJECT
ANGEL
FOOD

Project Angel Food prepares and delivers medically tailored meals to feed people impacted by serious illness, bringing comfort and hope every day.



Medically Tailored Meals: Tackling Food Insecurity and Nutrition Insecurity

- Medically tailored meals (MTM) are meals designed by a Registered Dietitian Nutritionist (RDN) reflecting appropriate dietary therapy based on evidence-based practice guidelines.
- Tailored to individual conditions, our MTM services are more than home-delivered meals; they include our nutrition counseling and education, supporting self-management and social connection.
- Our MTMs benefit patients with nutrition-related health conditions including congestive heart failure, diabetes, chronic kidney disease, cancer, HIV/AIDs, COVID-19, and high-risk pregnancies.

CalFIMC Brochure



Benefits

Improving

- Improving Quality of Life

Preventing

- Preventing Patient Hospitalization

Reducing

- Reducing Healthcare Costs



Challenges in Implementing ILOS

Convince Department of Health Care Services and Health Plans to reimburse the full cost

Continue to provide excellent service while for-profit companies enter into the market

Meet with Health Plans, convincing them to make Medically Tailored Meals a Benefit, and convincing them to contract with us

Project Angel Food Differentiators



We accommodate multiple illnesses in one person

Person-to-person deliveries (human connection)

Conduct a cursory wellness check

Nutrition education

Reduce loneliness

Lessons Learned



- Have Ongoing Relationships with Health Plans
- Gain respect and Credibility with the Department of Healthcare Services
- Be nimble enough to pivot to Meet the Need
- Have Strategic Capacity Building

Downtown Women's Center



ending homelessness for women in greater Los Angeles

THE ISSUES

1 IN 3 INDIVIDUALS EXPERIENCING HOMELESSNESS
IN THE UNITED STATES ARE WOMEN

WOMEN'S HOMELESSNESS AT A GLANCE:

- 223,578 nationwide
- 20,671 LA County
- 13,330 LA City

- Homeless women frequently experience gender-based violence
- Women of color are disproportionately affected by homelessness
- LGBTQ women are more likely to have experienced sexual assault or sexual violence
- Housing continues to be the most critically needed resource yet also the most difficult to access
- Homeless women are more likely to be older than the general population of women in Los Angeles
- Accessing necessary medical services remains a challenge





WE ASK

“WHAT HAPPENED TO YOU?”

**“WHAT DO YOU NEED TO GET
BETTER?”**

A CORNERSTONE OF ADDRESSING WOMEN'S HOMELESSNESS

trauma-informed care

EVERY WOMAN HOUSED

HOUSING

Permanent Supportive
Housing

Community-Based Housing

Rapid Re-Housing

Housing Justice Program

WELLNESS

Day Center

Women's Health Clinic

Project Roomkey

Clinical Services

EMPLOYMENT

Workforce Development

MADE by DWC

Vaccine Ambassadors

ADVOCACY

DWC Advocates

Domestic Violence &
Homeless Services
Coalition

Community-based
research

99%

HOUSING RETENTION RATE

260K

MEALS SERVED

5,472

WOMEN SERVED



HEALTH HOMES / WHOLE PERSON CARE

- Strides in financial support for case management and peer specialists
- Movement toward actualizing housing is healthcare
- Mostly experienced as behind-the-scenes administration via Department of Health Services, Housing for Health
- DWC was not a Community-Based Care Management Entity (C B-C ME)





CaIAIM

**DWC will partner with LA
Care & Health Net to provide:**

- Housing Transition Navigation Services
- Housing Tenancy & Sustaining Services Health Net



WE'RE LOOKING FORWARD TO:

- Healthcare benefit deepening equitable access through "no wrong door approach"
- Expanded offers for non-medical services
- Learning circle with California Community Foundation
- Reverse referrals as CBOs are set up well to identify need
- Keeping with best practices of Trauma-Informed Care, Housing First and Harm Reduction



OUR QUESTIONS

1. Can we partner to advocate for additional permanent housing?
2. Billing and contracting rates to be determined.



DWC WOMEN'S NEEDS ASSESSMENT

bit.ly/2019needsassessmentsummary

TRAUMA & RESILIENCY INFORMED CARE TOOLKIT

bit.ly/DWCtic

ADVOCACY TOOLKIT

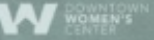
bit.ly/DWCadvocacy

SUPPORTIVE HOUSING FOR SURVIVORS TOOLKIT

bit.ly/DVhousingtoolkit

Creating Permanent Supportive Housing to Meet the Needs of Survivors of Domestic Violence

A Toolkit for Low-Income
Housing Developers, Architects,
Property Managers, and Housing
Service Providers



THANK
YOU



[@dwcweb](https://www.dwcweb.org)

Questions?

Richard Ayoub

Executive Director, Project Angel Food

Amy Turk, L.C.S.W.

Chief Executive Officer, Downtown Women's Center

We love to
hear from you!

*Contact us:
info@itup.org*

