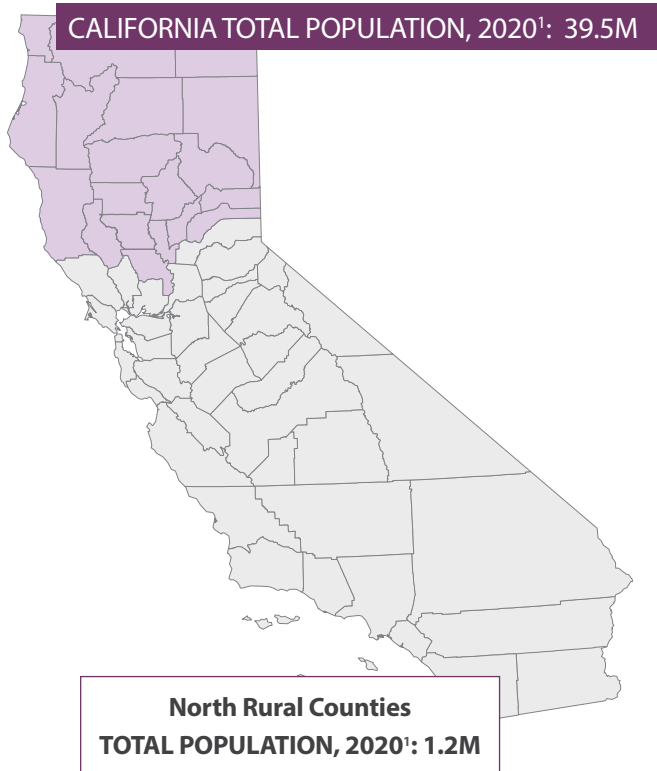


North Rural Counties

July 2022

BUTTE, COLUSA, DEL NORTE, GLENN, HUMBOLDT, LAKE, LASSEN, MENDOCINO, MODOC, NEVADA, PLUMAS, SHASTA, SIERRA, SISKIYOU, SUTTER, TEHAMA, TRINITY, YUBA



	Population ^{1,2}	Uninsured, 2020 ³	Uninsured, Incomes ≤ 138% Federal Poverty Level (FPL), 2020 ³
BUTTE	211,632	14,000 (6.7%*)	7,000 (14.4%*)
SHASTA	182,155	10,000 (5.9%)	-
HUMBOLDT	136,463	6,000 (5.1%*)	-
NEVADA	102,241	5,000 (5.4%*)	-
SUTTER	99,633	7,000 (6.8%*)	-
MENDOCINO	91,601	5,000 (5.7%*)	-
YUBA	81,575	5,000 (7.0%*)	-
LAKE	68,163	2,000 (3.8%*)	-
TEHAMA	65,829	1,000 (0.7%*)	-
GLENN ²	28,917		
COLUSA ²	21,839		
Aggregated Data for Tehama, Glenn, and Colusa Counties			
SISKIYOU	44,076	7,000 (5.1%*)	1,000 (2.8%*)
LASSEN	32,730		
DEL NORTE	27,743		
PLUMAS	19,790		
TRINITY	16,112	Aggregated Data for Siskiyou, Lassen, Del Norte, Plumas, Trinity, Modoc, and Sierra Counties	
MODOC	8,700		
SIERRA	3,236		

* Data for these counties are considered statistically unstable | (-) Notes a value unavailable due to data masking

FIGURE 1. Race/Ethnicity Among the Uninsured, 2020²

Percent by Race	County Population							Insured							Uninsured						
	Latinx	White	Black	AI/AN	Asian	NH/PI	2+	Latinx	White	Black	AI/AN	Asian	NH/PI	2+	Latinx	White	Black	AI/AN	Asian	NH/PI	2+
Butte	16.4%	74.0%	-	2.8%*	1.3%*	-	5.1%*	81.5%*	98.8%*	-	-	78.7%*	-	100.0%*	-	1.2%*	-	88.9%*	-	-	-
Shasta	6.6%	88.0%	-	0.7%*	2.1%*	-	2.6%*	100.0%*	93.4%*	-	100.0%*	100.0%*	-	98.7%*	-	6.6%	-	-	-	-	-
Humboldt	11.7%	76.4%	-	1.8%*	6.9%*	-	3.2%*	71.6%*	98.1%*	-	100.0%*	95.8%*	-	100.0%*	-	1.9%*	-	-	-	-	-
Nevada	14.9%*	81.8%*	-	-	0.6%*	-	2.3%*	100.0%*	95.2%*	-	-	100.0%*	-	37.7%*	-	4.8%*	-	-	-	-	-
Sutter	30.8%	47.6%	-	-	19.1%	-	1.9%*	90.0%*	97.0%*	-	-	87.9%*	-	100.0%*	10.0%*	3.0%*	-	-	12.1%*	-	-
Mendocino	24.3%	61.8%	-	7.0%*	2.6%*	-	2.8%*	85.8%*	97.4%*	-	100.0%*	75.9%*	-	100.0%*	-	2.6%*	-	-	-	-	-
Yuba	26.6%	56.8%	2.6%*	1.7%*	9.1%	-	2.9%*	81.6%*	97.9%*	100.0%*	100.0%*	100.0%*	-	71.9%*	18.4%*	-	-	-	-	-	-
Lake	22.5%	71.1%	2.3%*	-	1.8%*	-	1.5%*	100.0%*	94.7%*	100.0%*	-	100.0%*	-	100.0%*	-	5.3%*	-	-	-	-	-
Aggregated Data for Tehama, Glenn, and Colusa Counties																					
	34.0%	58.9%	-	3.8%*	-	-	3.1%*	100.0%*	98.9%*	-	100.0%*	-	-	100.0%*	-	1.1%*	-	-	-	-	-
Aggregated Data for Siskiyou, Lassen, Del Norte, Plumas, Trinity, Modoc, and Sierra Counties																					
	20.6%	70.4%	-	3.4%*	-	-	5.5%*	100.0%*	95.1%*	-	51.9%*	-	-	100.0%*	-	4.9%*	-	-	-	-	-

AI/AN=American Indian/Alaska Native | NH/PI = Native Hawaiian/Pacific Islander | 2+= Two or More Races | * Data for these counties are considered statistically unstable.
(-) Notes a value unavailable due to data masking.



FIGURE 2. Employer-Sponsored Coverage, 2020²

	Percent with Employer-Sponsored Coverage Among North Rural Counties	Race/Ethnicity Breakdown Among North Rural Counties with Employer-Sponsored Coverage					
		Latinx	White	Black	AI/AN	Asian	NH/PI
Butte	102,000 (50.8%)	13.3%	76.7%	-	-	0.6%*	-
Shasta	73,000 (41.6%)	5.5%*	88.5%*	-	-	4.0%*	-
Humboldt	55,000 (43.1%)	6.4%*	80.4%	-	-	-	-
Nevada	38,000 (39.8%)	9.2%*	89.6%*	-	-	-	-
Sutter	37,000 (37.0%)	31.5%	52.8%	-	-	11.3%*	-
Mendocino	34,000 (40.0%)	33.5%*	54.0%	-	7.7%*	-	-
Yuba	33,000 (41.9%)	17.5%*	61.7%	2.9%*	-	14.3%*	-
Lake	22,000 (34.9%)	9.9%*	75.7%	6.6%*	-	4.2%*	-
Aggregated Data for Tehama, Glenn, and Colusa Counties							
	40,000 (35.0%)	36.8%	61.5%	-	-	-	-
Aggregated Data for Siskiyou, Lassen, Del Norte, Plumas, Trinity, Modoc, and Sierra Counties							
	47,000 (35.4%)	-	88.5%*	-	4.9%*	-	-

AI/AN=American Indian/Alaska Native | NH/PI = Native Hawaiian/Pacific Islander | 2+ = Two or More Races | * Data for these counties are considered statistically unstable.
 (-) Notes a value unavailable due to data masking.

COVERED CALIFORNIA

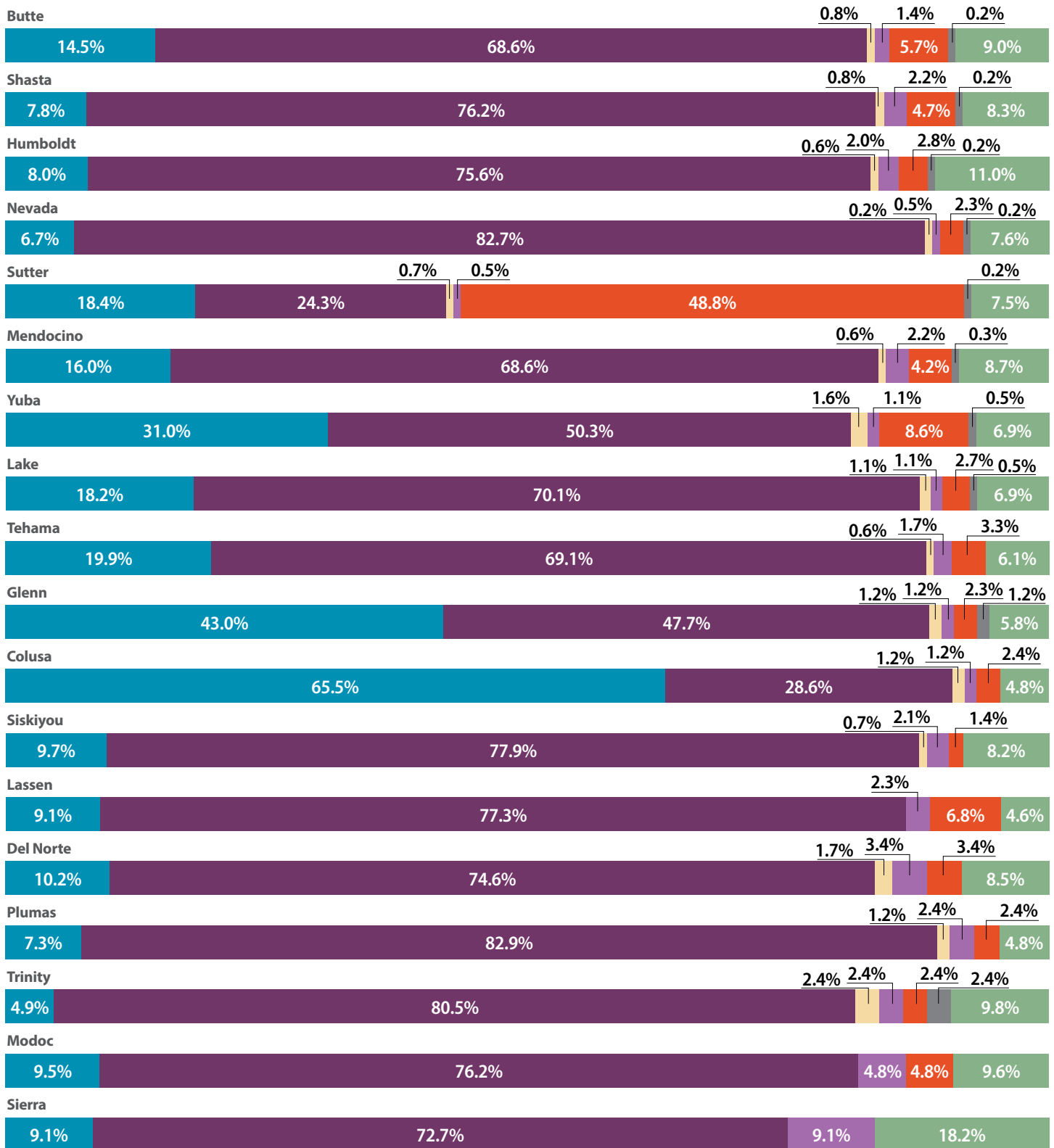
FIGURE 3. Percent of Counties' Populations Enrolled in Covered California, December 2021³

	Enrollment	Subsidized Enrollees	Unsubsidized Enrollees
Butte	7,820 (3.7%)	7,520 (96.2%)	300 (3.8%)
Shasta	7,630 (4.2%)	7,410 (97.1%)	220 (2.9%)
Humboldt	6,760 (5.0%)	6,470 (95.7%)	290 (4.3%)
Nevada	7,890 (7.7%)	7,460 (94.6%)	430 (5.4%)
Sutter	4,870 (4.9%)	4,780 (98.2%)	100 (2.1%)
Mendocino	4,540 (5.0%)	4,330 (95.4%)	210 (4.6%)
Yuba	2,360 (2.9%)	2,290 (97.0%)	70 (3.0%)
Lake	2,280 (3.3%)	2,190 (96.1%)	80 (3.5%)
Tehama	2,300 (3.5%)	2,260 (98.3%)	40 (1.7%)
Glenn	1,020 (3.5%)	990 (97.1%)	30 (2.9%)
Colusa	960 (4.4%)	960 (100.0%)	10 (1.0%)
Siskiyou	1,790 (4.1%)	1,740 (97.2%)	60 (3.4%)
Lassen	550 (1.7%)	540 (98.2%)	10 (1.8%)
Del Norte	740 (2.7%)	720 (97.3%)	20 (2.7%)
Plumas	990 (5.0%)	960 (97.0%)	30 (3.0%)
Trinity	500 (3.1%)	490 (98.0%)	10 (2.0%)
Modoc	280 (3.2%)	280 (100.0%)	10 (3.6%)
Sierra	140 (4.3%)	140 (100.0%)	10 (7.1%)

Covered California's privacy policy rounds all figures to the nearest 10. As a result, grand totals shown may be more than 100 percent.



FIGURE 4. Covered California Enrollment by Race/Ethnicity, December 2021³



■ Latinx
 ■ White
 ■ Black
 ■ American Indian/Alaska Native
 ■ Asian
 ■ Native Hawaiian/Pacific Islander
 ■ Multiple Races or Other

There is no data available for the Native Hawaiian/Pacific Islander and Black categories in some North Rural counties.



FIGURE 5. Covered California Enrollment by FPL, December 2021³

	Under 138% FPL	Between 138% and 400% FPL	Between 400% and 600% FPL	Over 600% FPL
Butte	1.7%	87.6%	6.5%	1.9%
Shasta	1.4%	88.0%	7.2%	2.2%
Humboldt	1.9%	85.2%	8.4%	2.4%
Nevada	1.3%	82.1%	10.6%	3.3%
Sutter	1.2%	91.7%	5.1%	1.2%
Mendocino	1.5%	85.0%	8.8%	2.6%
Yuba	1.3%	91.5%	4.2%	1.3%
Lake	2.2%	87.4%	7.5%	1.8%
Tehama	2.6%	89.1%	6.1%	1.7%
Glenn	1.0%	93.1%	4.9%	1.0%
Colusa	2.1%	89.6%	7.3%	1.0%
Siskiyou	1.7%	86.7%	7.8%	2.8%
Lassen	1.8%	90.9%	5.5%	1.8%
Del Norte	2.7%	86.5%	6.8%	1.4%
Plumas	3.0%	84.8%	9.1%	2.0%
Trinity	2.0%	90.0%	6.0%	2.0%
Modoc	3.6%	89.3%	7.1%	3.6%
Sierra	7.1%	85.7%	14.3%	7.1%

Enrollments where the FPL of the member is not known are not included here. Covered California's data privacy policy rounds all figures to the nearest 10. As a result, grand totals shown may be more than 100 percent.

FIGURE 6. Covered California Enrollment by Health Plan, December 2021³

	Anthem Blue Cross	Blue Shield	Health Net	Kaiser Permanente	Molina Healthcare
Butte	4,240	3,570	10	10	10
Shasta	4,550	3,070	-	10	10
Humboldt	3,820	2,940	-	10	-
Nevada	3,520	4,370	-	10	-
Sutter	2,520	2,270	-	90	-
Mendocino	2,100	2,450	-	-	-
Yuba	750	870	-	740	-
Lake	1,050	1,220	-	-	-
Tehama	1,360	940	-	-	-
Glenn	580	440	-	-	-
Colusa	430	540	-	-	-
Siskiyou	1,090	710	-	-	-
Lassen	400	150	-	10	-
Del Norte	390	350	-	-	-
Plumas	600	390	-	-	-
Trinity	280	230	-	-	-
Modoc	150	130	-	-	-
Sierra	80	60	-	-	-

Covered California's privacy policy rounds all figures to the nearest 10. As a result, grand totals shown may be slightly different from the totals in the individual plan data.

MEDI-CAL

FIGURE 7. Medi-Cal Enrollment, April 2022^{4,5}

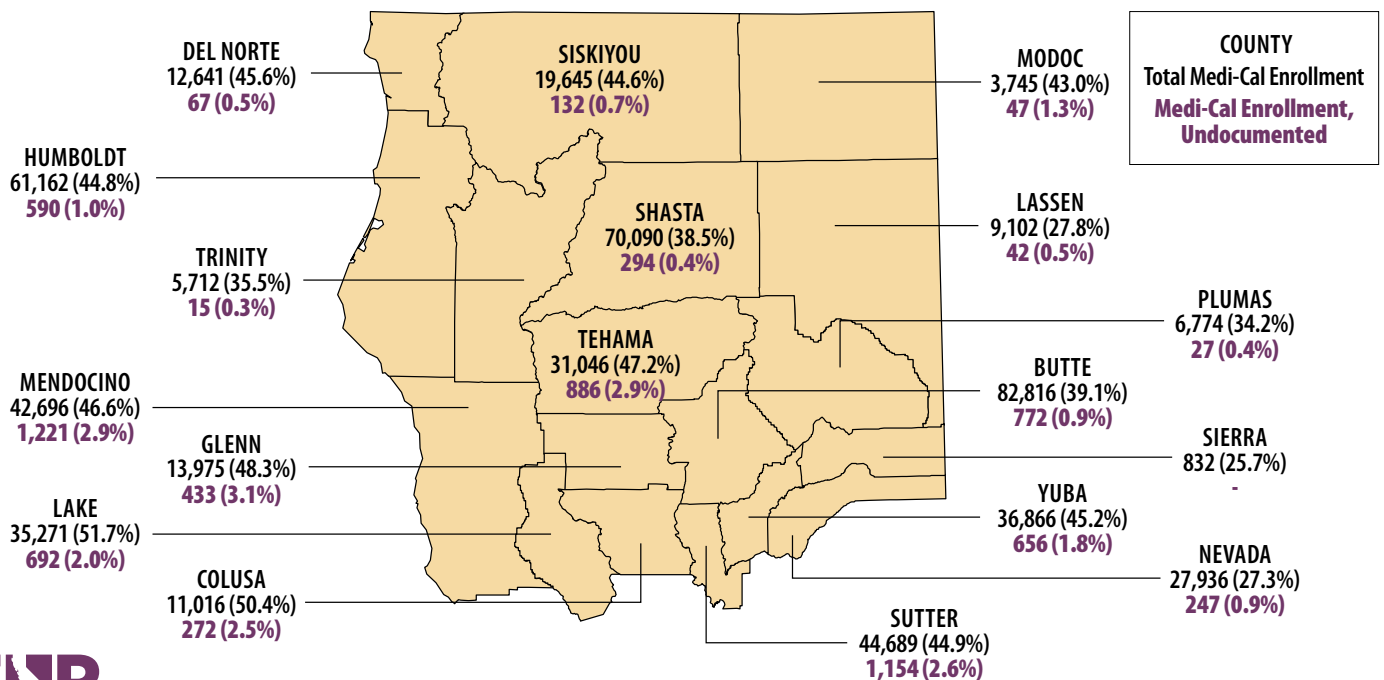
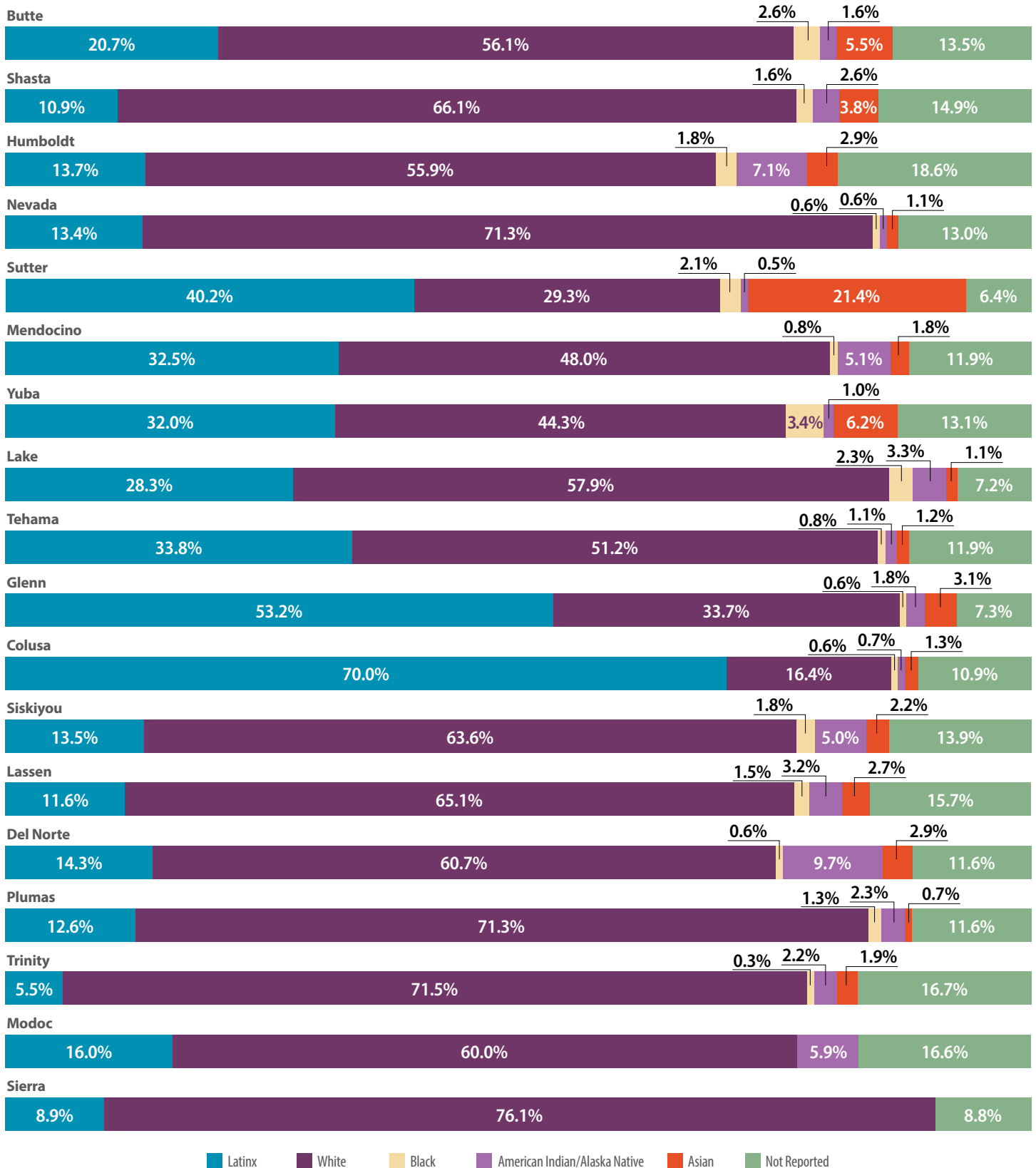




FIGURE 8. Medi-Cal Enrollment by Race/Ethnicity, April 2022⁶



Data for some race/ethnicity categories are not available in **Modoc** and **Sierra** counties.



FIGURE 9. Medi-Cal Enrollment in Managed Care and Fee-For-Service (FFS), April 2022⁷

	Medi-Cal MCP Enrollment	Anthem Blue Cross	Partnership Health Plan	California Health & Wellness	Medi-Cal FFS Enrollment
Butte	71,464	24,633		46,831	11,352
Shasta	68,896		68,896		1,194
Humboldt	59,674		59,674		1,488
Nevada	23,974	14,185		9,789	3,962
Sutter	37,392	24,176		13,216	7,297
Mendocino	40,403		40,403		2,293
Yuba	31,060	19,692		11,368	5,806
Lake	34,191		34,191		1,080
Tehama	25,206	10,647		14,559	5,840
Glenn	11,912	2,886		9,026	2,063
Colusa	9,282	5,292		3,990	1,734
Siskiyou	19,004		19,004		641
Lassen	8,602		8,602		500
Del Norte	12,404		12,404		237
Plumas	5,742	3,006		2,736	1,032
Trinity	5,505		5,505		207
Modoc	3,947		3,947		-
Sierra	637	381		256	195

□ = Health Plan does not operate in this county

FIGURE 10. Expected CalAIM Implementation Start Dates



**January 1
2022**

**July 1
2022**

Enhanced Care Management (ECM), a new Medi-Cal benefit under CalAIM has a phased implementation timeline.

MEDICARE

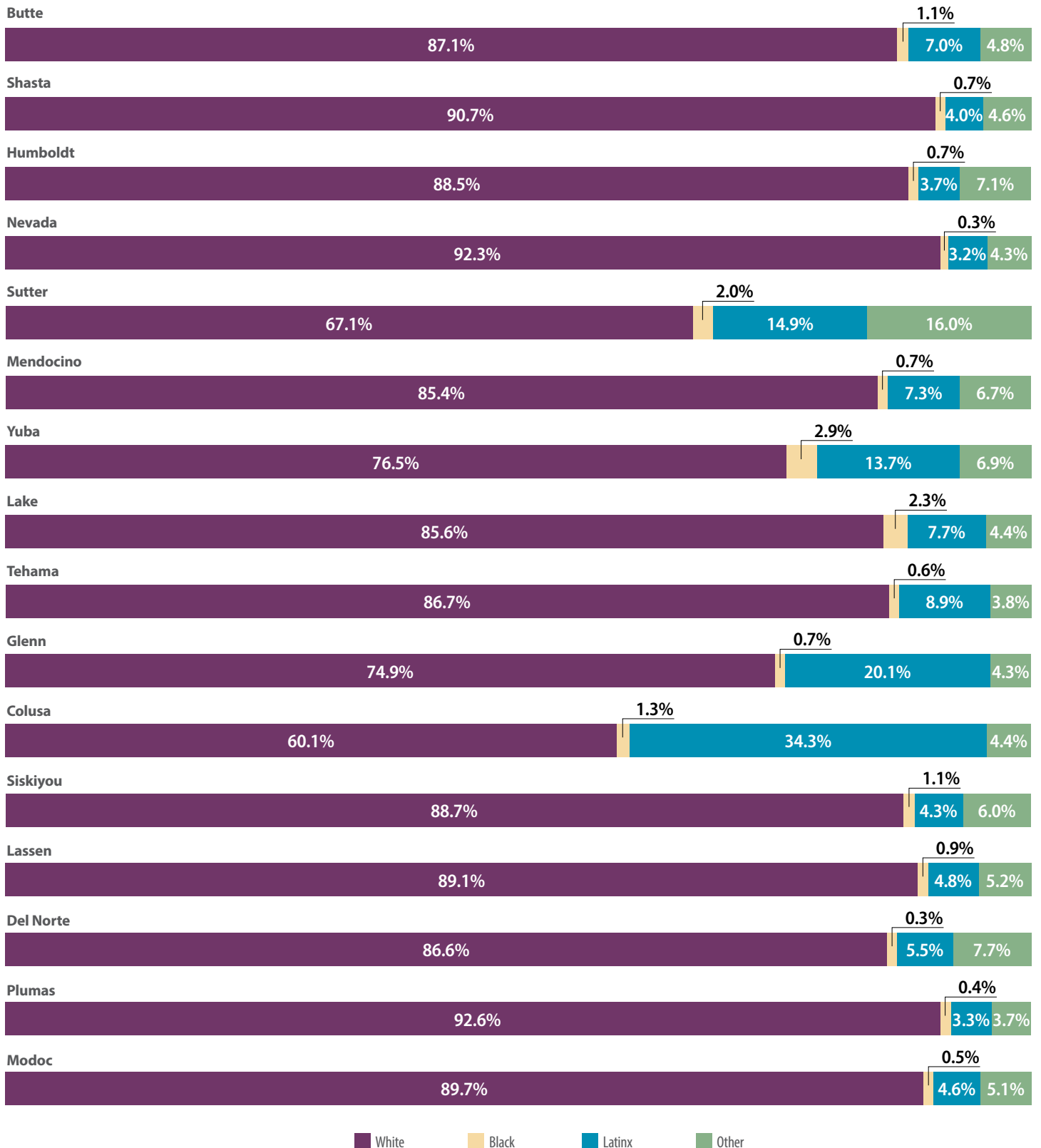
FIGURE 11. Medicare Enrollment and Percent of Counties' Population, 2020^{5,8}

	Medicare	Medicare Advantage	FFS	Dual Eligible** (April 2022) ⁵
Butte	43,710 (20.7%)	3,713 (8.5%)	39,997 (91.5%)	10,960 (25.1%)
Shasta	45,993 (25.2%)	3,355 (7.3%)	42,638 (92.7%)	10,301 (22.4%)
Humboldt	28,085 (20.6%)	1,367 (4.9%)	26,718 (95.1%)	7,084 (25.2%)
Nevada	28,853 (28.2%)	5,551 (19.2%)	23,302 (80.8%)	3,414 (11.8%)
Sutter	16,549 (16.6%)	1,407 (8.5%)	15,142 (91.5%)	5,188 (31.3%)
Mendocino	22,209 (24.2%)	2,287 (10.3%)	19,922 (89.7%)	5,035 (22.7%)
Yuba	12,076 (14.8%)	1,870 (15.5%)	10,206 (84.5%)	3,968 (32.9%)
Lake	16,344 (24.0%)	1,151 (7.0%)	15,193 (93.0%)	5,265 (32.2%)
Tehama	14,557 (22.1%)	1,145 (7.9%)	13,412 (92.1%)	3,893 (26.7%)
Glenn	5,539 (19.2%)	284 (5.1%)	5,255 (94.9%)	1,575 (28.4%)
Colusa	3,576 (16.4%)	280 (7.8%)	3,296 (92.2%)	1,149 (32.1%)
Siskiyou	13,096 (29.7%)	451 (3.4%)	12,645 (96.6%)	3,032 (23.2%)
Lassen	4,910 (15.0%)	174 (3.5%)	4,736 (96.5%)	1,223 (24.9%)
Del Norte	6,104 (22.0%)	210 (3.4%)	5,894 (96.6%)	1,801 (29.5%)
Plumas	6,069 (30.7%)	376 (6.2%)	5,693 (93.8%)	1,039 (17.1%)
Trinity	3,413 (21.2%)	123 (3.6%)	3,290 (96.4%)	799 (23.4%)
Modoc	2,438 (28.0%)	83 (3.4%)	2,355 (96.6%)	579 (23.7%)
Sierra	863 (26.7%)	40 (4.6%)	823 (95.4%)	180 (20.9%)

**Dual Eligibles are those eligible for Medicare and Medi-Cal, also referred to as Medi Meds.
Due to small sample sizes and data privacy policies, percentages may equal more than 100 percent.



FIGURE 12. Medicare Enrollment by Race/Ethnicity, 2020⁸



This dataset suppresses data that is less than 11. For this reason, **Trinity** and **Sierra** are excluded from this figure.



DATA SNAPSHOT: SOCIAL DRIVERS OF HEALTH

Social Drivers of Health (SDoH), also known as Social Determinants of Health, refer to the conditions in environments where people are born, live, learn, work, play, worship, and age that influence their health risks and overall wellbeing. Some of these drivers include access to safe housing, nutritious food, parks and green space, and even broadband and internet connectivity, all of which impact the ability of and opportunity for Californians to live their healthiest lives.

1,637	Butte
1,218	Aggregated Data for Shasta, Del Norte, Siskiyou, Lassen, Plumas, Modoc, and Sierra Counties
1,225	Humboldt
469	Nevada
-	Sutter
985	Mendocino
-	Yuba
302	Lake
166	Tehama
392	Aggregated Data for Glenn, Colusa, and Trinity Counties

Individuals Who Accessed Homelessness Services through September 2021^{9*}



Individuals Enrolled in CalFRESH in April 2022¹⁰



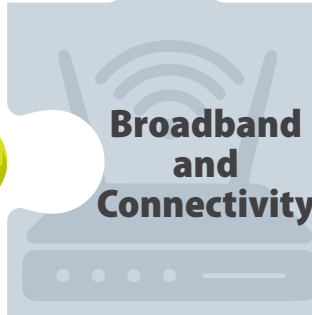
Butte	32,924
Shasta	25,717
Humboldt	23,998
Nevada	8,161
Sutter	12,630
Mendocino	14,514
Yuba	16,245
Lake	14,082
Tehama	10,335
Glenn	3,787
Colusa	2,191
Siskiyou	7,976
Lassen	3,595
Del Norte	5,832
Plumas	2,360
Trinity	2,411
Modoc	1,630
Sierra	317

33.6%	Butte
48.4%	Shasta
49.7%	Humboldt
53.3%	Nevada
42.0%	Sutter
52.9%	Mendocino
38.2%	Yuba
60.3%	Lake
69.4%	Tehama
77.0%	Glenn
44.2%	Colusa
36.9%	Siskiyou
37.3%	Lassen
56.9%	Del Norte
24.3%	Plumas
7.0%	Trinity
39.8%	Modoc
14.8%	Sierra

Percent of Individuals Living < 0.5 Miles from Green Space in 2020¹



Broadband Adoption Rate at 25/3 Mbps or More in 2020¹²



Butte	74.3%
Shasta	59.1%
Humboldt	66.9%
Nevada	52.4%
Sutter	72.9%
Mendocino	48.4%
Yuba	67.8%
Lake	43.5%
Tehama	37.1%
Glenn	41.3%
Colusa	26.5%
Siskiyou	15.5%
Lassen	23.6%
Del Norte	73.8%
Plumas	26.6%
Trinity	14.4%
Modoc	1.7%
Sierra	8.2%

*There is no homelessness data available for **Sutter** and **Yuba** counties.



COVERAGE AT A GLANCE | NORTH RURAL COUNTIES

NOTES

All decimals rounded to nearest tenth.

1. United States Census Bureau, [2020 Census Redistricting Data](#), Accessed: June 2, 2022.
2. UCLA Center for Health Policy Research, [2020 California Health Interview Survey](#), Public Use File, Accessed: June 2, 2022.
3. Covered California, December 2021, [Active Member Profile](#), Accessed: June 2, 2022.
4. Department of Health Care Services, [Medi-Cal Certified Eligibles Data Table by County and Dual Status](#), April 2022, Accessed: June 3, 2022.
5. Department of Health Care Services, [Medi-Cal Certified Eligibles Data Table by County and Aid Code Group](#), April 2022, Accessed: June 3, 2022.
6. Department of Health Care Services, [Medi-Cal Certified Eligibles Data Table Race/Ethnicity and Age](#), April 2022, Accessed: June 3, 2022.
7. Department of Health Care Services, [Medi-Cal Managed Care Enrollment Report](#), May 2022, Accessed: June 29, 2022.
8. Centers for Medicare and Medicaid Services, [Medicare Geographic Variation - by National, State & County](#), 2020, Public Use File, Accessed: June 3, 2022.
9. California Interagency Council on Homelessness, [Homeless Data Integration System](#), January 2021 through September 2021, Accessed: June 3, 2022.
Note: This data updates on a quarterly basis and is dependent on county reporting, thus data may adjust over time.
10. California Department of Social Services, [CalFresh Data Dashboard](#), April 2022, Accessed: June 3, 2022.
Note: California Department of Social Services updates their dashboard with preliminary data on the 1st of the month and again with the final data from the 15th to the 20th of the month.
11. Let's Get Healthy California, Data Dashboard for Aging, [Strategy C: Outdoor & Community Spaces for All Ages](#), 2020, Accessed: June 3, 2022.
12. California Public Utilities Commission, [EOY 2020 BB Adoption by Population](#), Accessed June 29, 2022. Note: According to the FCC, 25/3 is the minimum standard for broadband internet.

About ITUP

ITUP is an independent, nonprofit, health policy institute that has been a central voice in the California health landscape for more than two decades. ITUP serves as a trusted expert, grounded in statewide and regional connections with a network of policymakers, health care leaders, and stakeholders. The mission of ITUP is to promote innovative and workable policy solutions that expand health care access and improve the health of all Californians.

ITUP is generously supported by the following funders:

- California Community Foundation
- California Health Care Foundation
- The California Endowment
- The California Wellness Foundation



@ITUP



@InsuretheUninsuredProject



@InsuretheUninsuredProject



www.itup.org