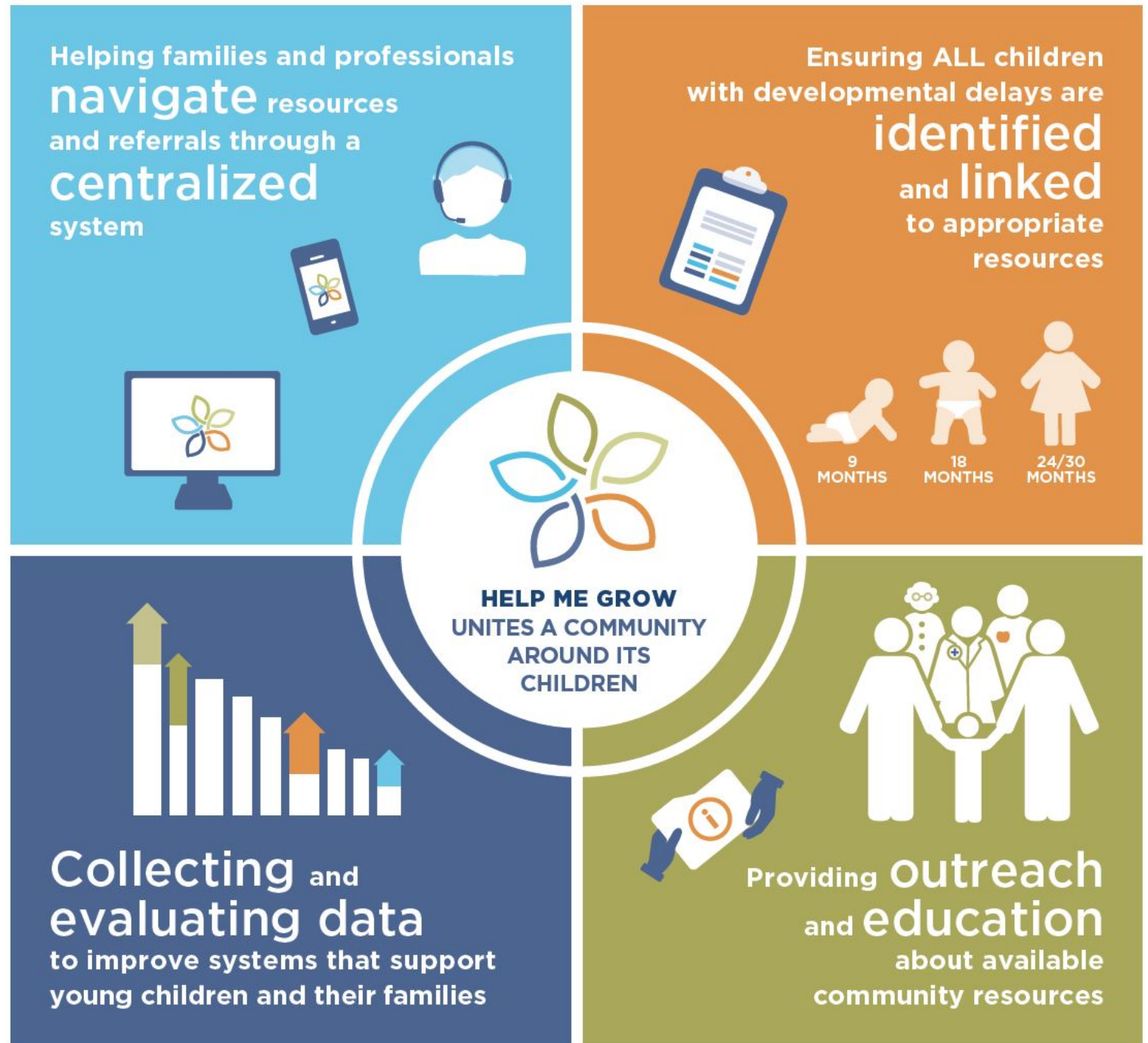


Capitalizing on Help Me Grow County Experiences

Sarah Crow
Managing Director
First 5 Center for Children's Policy

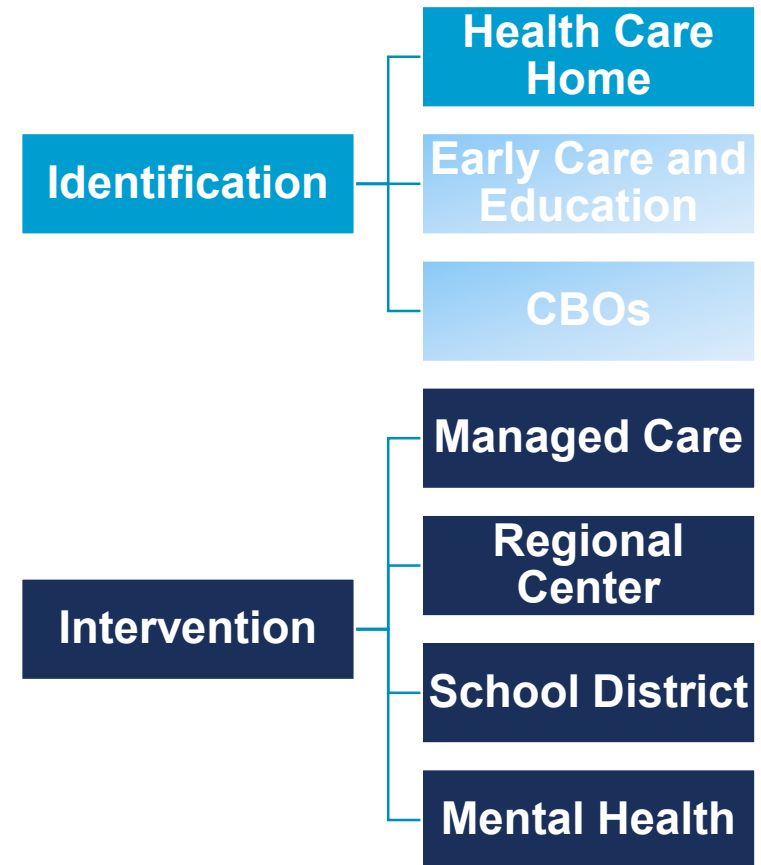
February 24, 2020



Definitions

Help Me Grow: Nationally-recognized model that increases coordination across systems of care to connect young children to screening and early intervention

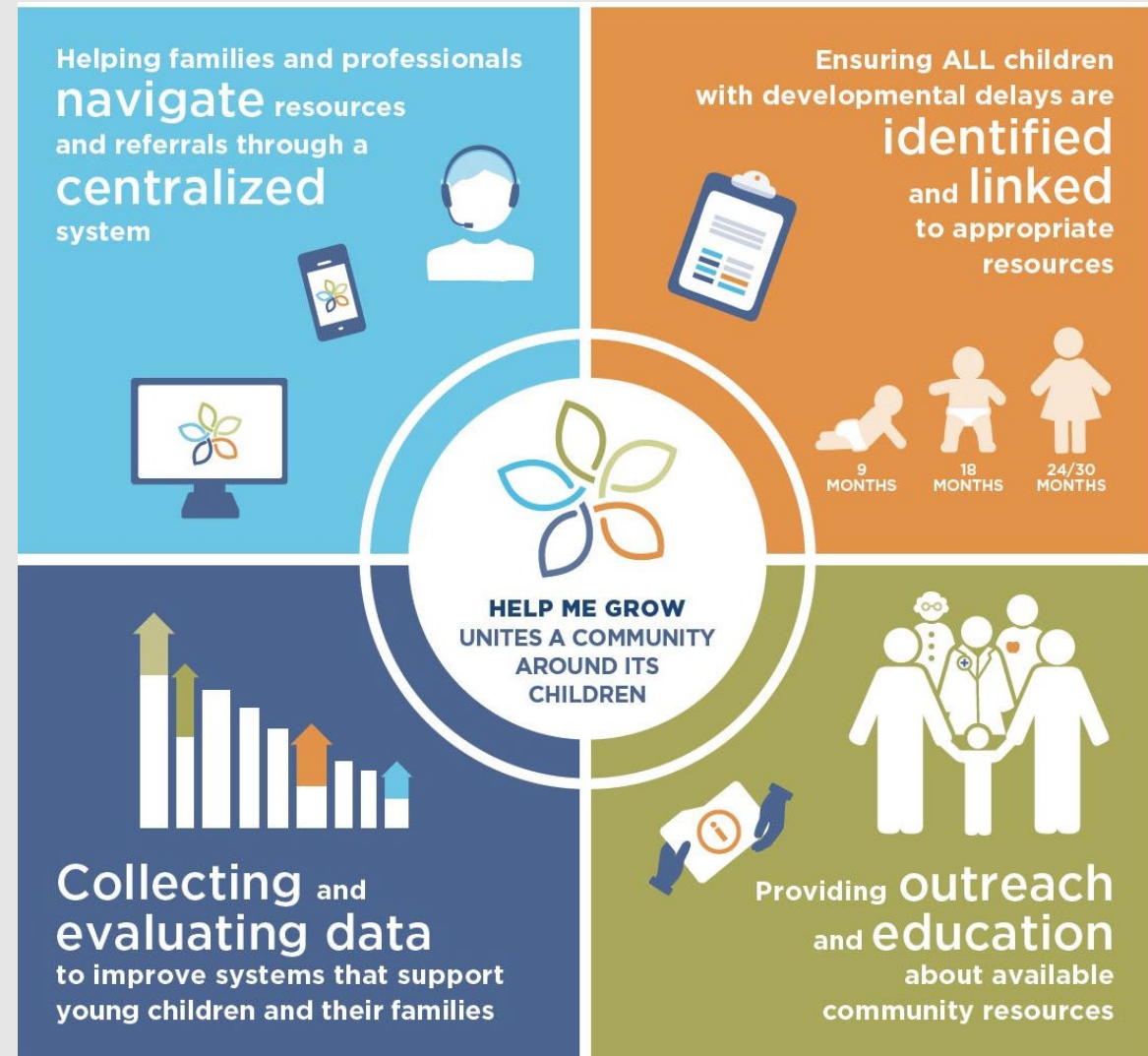
Early identification and intervention (EII) system: System of services that identifies & addresses developmental and behavioral concerns and delays



Help Me Grow Model

Four Components

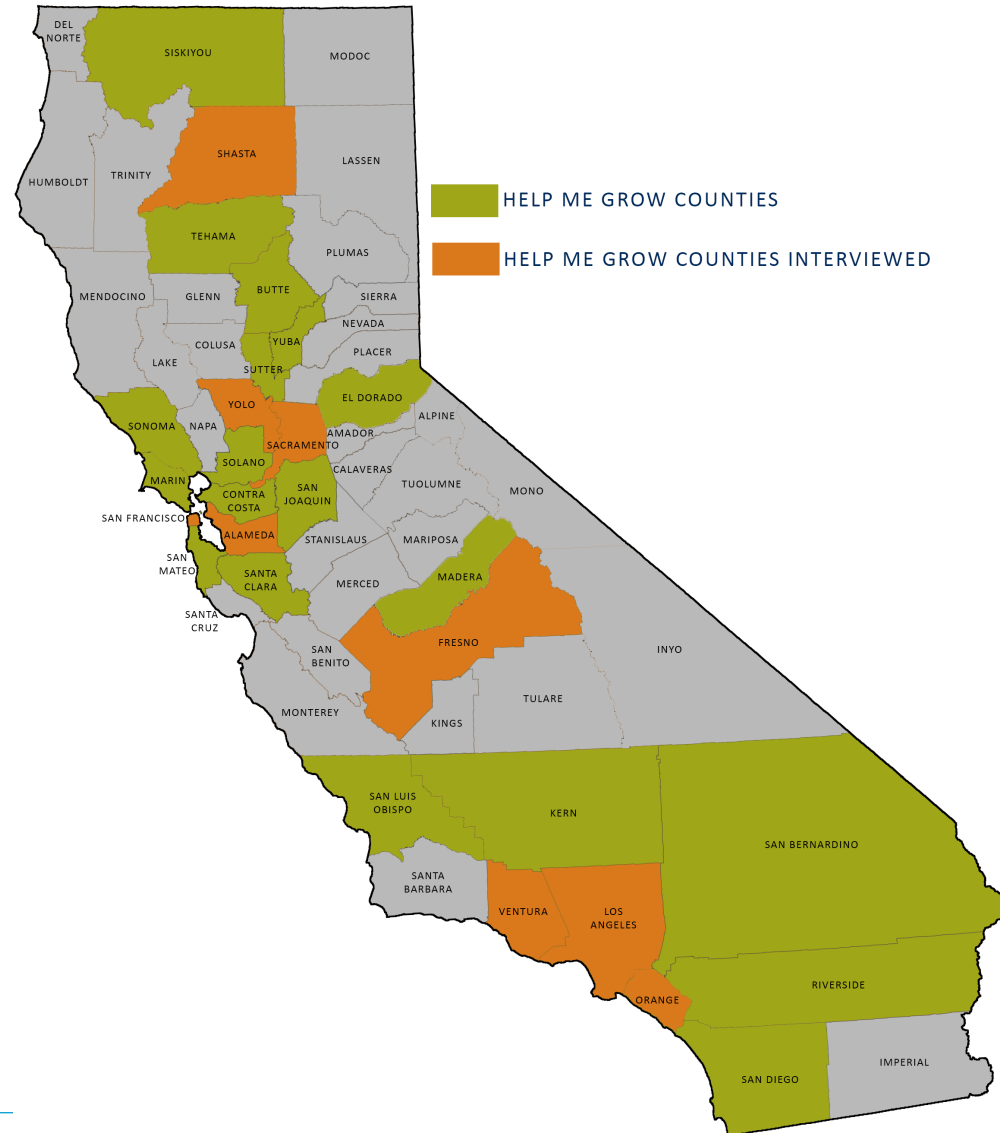
- Centralized Access Point
- Identification of Delays and Linkage to Resources
- Outreach and Education
- Data Collection and Analysis



HMG Reach & Counties Interviewed

Counties Interviewed

- Alameda
- Fresno
- Los Angeles
- Orange
- Sacramento
- San Francisco
- Shasta
- Ventura
- Yolo



Successes & Innovations

- Enhancing and developing new partnerships to realize collective impact
- Communities are being served better
- Real time understanding of available services and supports
- Piloting new ideas and developing innovative solutions to address systemic problems

Limitations & Complexities

- Data, data, data
 - Not all HMGs are collecting or reporting
 - Relevant systems don't always work together
- Messaging
 - No statewide messaging or campaign
 - No standard pathway to navigate systems
- Funding
 - Prop 10 declining revenue
 - Inability for some First 5s to harness additional funds
- Local control
 - HMG systems reflective of local landscape

Lessons for the State

- Locally-informed centralized access point is important
- Community-based screening continue to play a role, even as health plans do more developmental screening
- Provide additional support for & oversight of Medi-Cal managed care plans
- Create statewide EII messaging and promotional materials
- Data should be linked across systems

Thank you!

Reach out!

sarah@first5center.org