

**CALIFORNIA
ACCOUNTABLE
COMMUNITIES
FOR HEALTH
INITIATIVE**

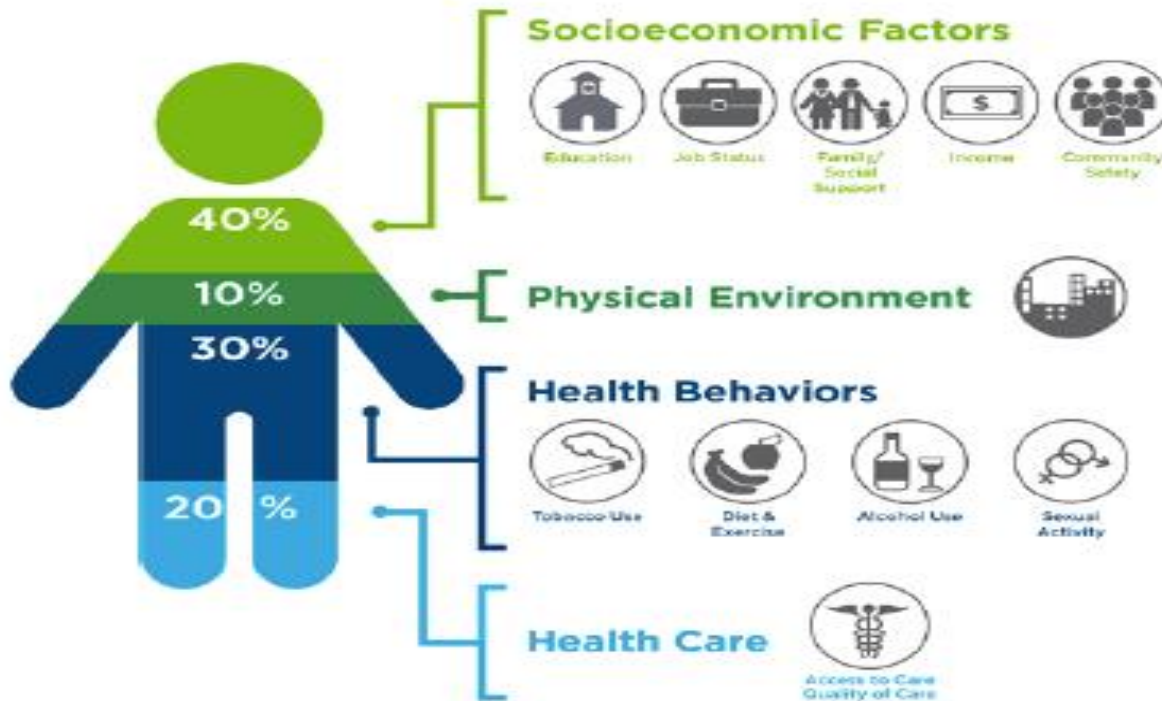


Accountable Communities for Health:
The Next Generation of Health System
Transformation

Barbara Masters

ITUP February 6, 2018

What Goes Into Your Health?



How can the health system better address these factors in a coordinated and holistic manner?

Source: Institute for Clinical Systems Improvement, Going Beyond Clinical Work: Solving Complex Problems (October 2016)

The Bridgeport Group

What goes into your health? An illustration of the impact health care has on a person's health versus non-healthcare factors.

Elements of an ACH



Shared vision and goals



Governance
(partners & leadership)



Resident Engagement



Backbone organization



Data analytics and sharing capacity



Wellness Fund & Sustainability

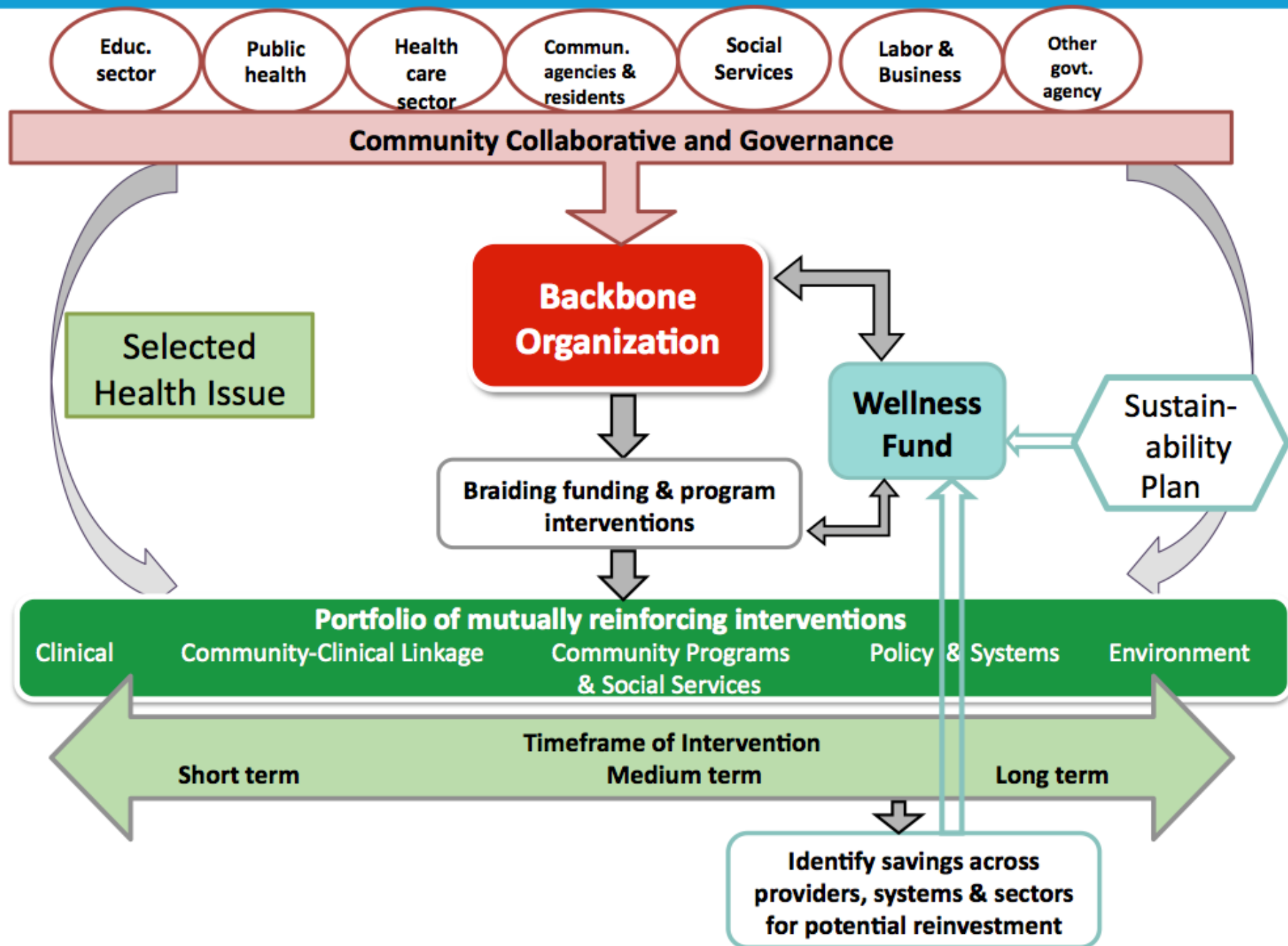


Portfolio of interventions



Equity

Accountable Communities for Health



California Accountable Communities for Health Initiative

blue  of california
foundation

Blue Shield of California Foundation is an independent licensee of the Blue Shield Association



SIERRA HEALTH
FOUNDATION

 The
California
Endowment

 KAISER PERMANENTE®

 *Community*
PARTNERS®

*Accelerating ideas into action
to advance the public good.*


California Health & Human Services Agency

CACHI 



QUESTIONS?