
Overview of the Uninsured: North Central, 1996-2004

Insure the Uninsured Project
www.itup.org

This research is funded by grants from:
The California Wellness Foundation
The California Endowment
Blue Shield of California Foundation
LA Care Health Plan



*Presented to the North Central Regional Workgroup
October 23, 2006*

Agenda

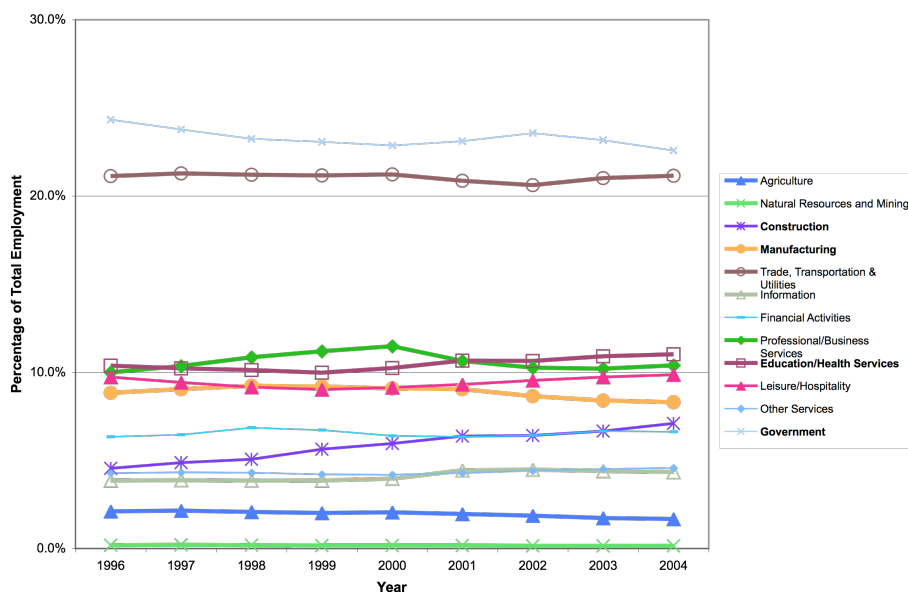
- General demographic and insurance changes
- Community Clinics
 - Utilization
 - Funding
- Hospitals
 - Utilization
 - Financing
- County Health
 - Demographics
 - Financing

General Perspective

- Counties included in this analysis are El Dorado, Napa, Placer, Sacramento, Solano, Sonoma, and Yolo
- The proportion of employment in the government and manufacturing industries declined while the share of jobs in construction and education/health services grew
- After three years of rising unemployment, the unemployment rate dropped in 2004 to 5.4%.
- The proportion of Hispanic residents in the North Central increased while the proportion of Whites decreased. In 2004, Whites made up over 60% of the population.
- The proportion of North Central residents enrolled in Medi-Cal and Healthy Families has been growing since 1999 to over 16% of the population.
- The rate of uninsurance has remained around 19% since 1998.

Insure the Uninsured Project
North Central Regional Overview of the Uninsured, 1996-2004

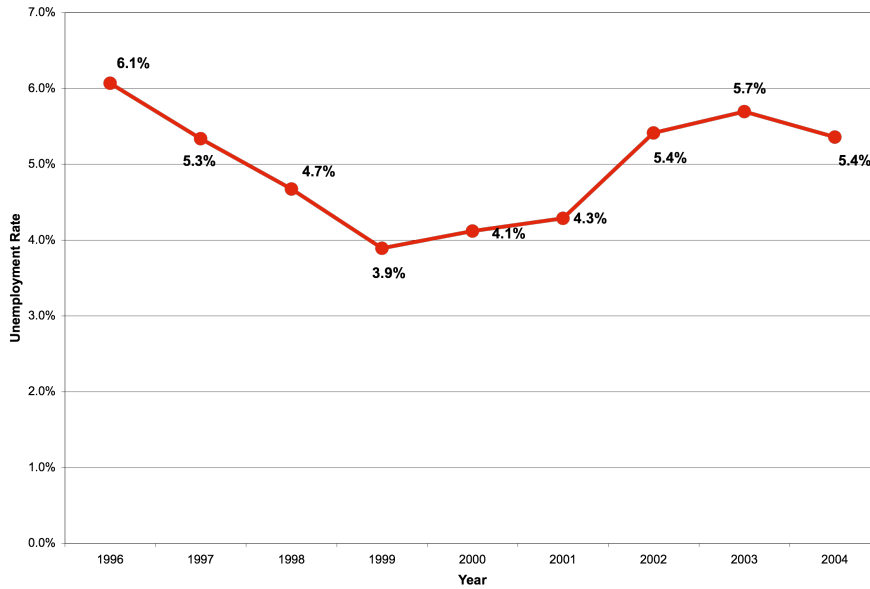
North Central Changing Economy by Industry, 1996-2004



Source: CA Employment Development Dept.

Insure the Uninsured Project
North Central Regional Overview of the Uninsured, 1996-2004

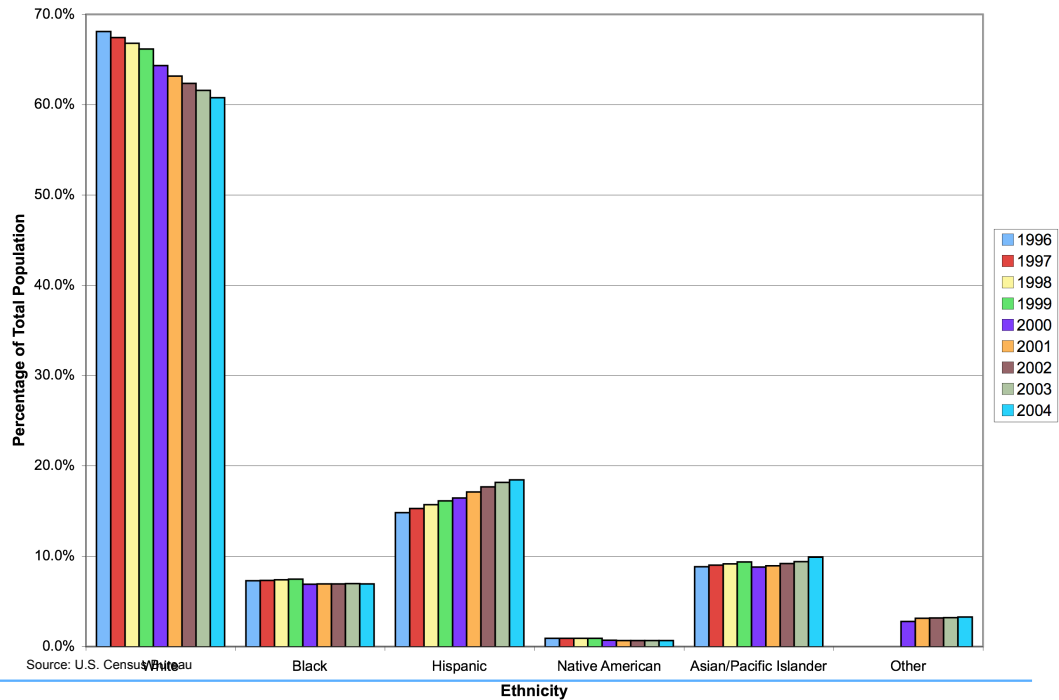
North Central Regional Unemployment Rate, 1996-2004



Source: CA Employment Development Department

Insure the Uninsured Project
North Central Regional Overview of the Uninsured, 1996-2004

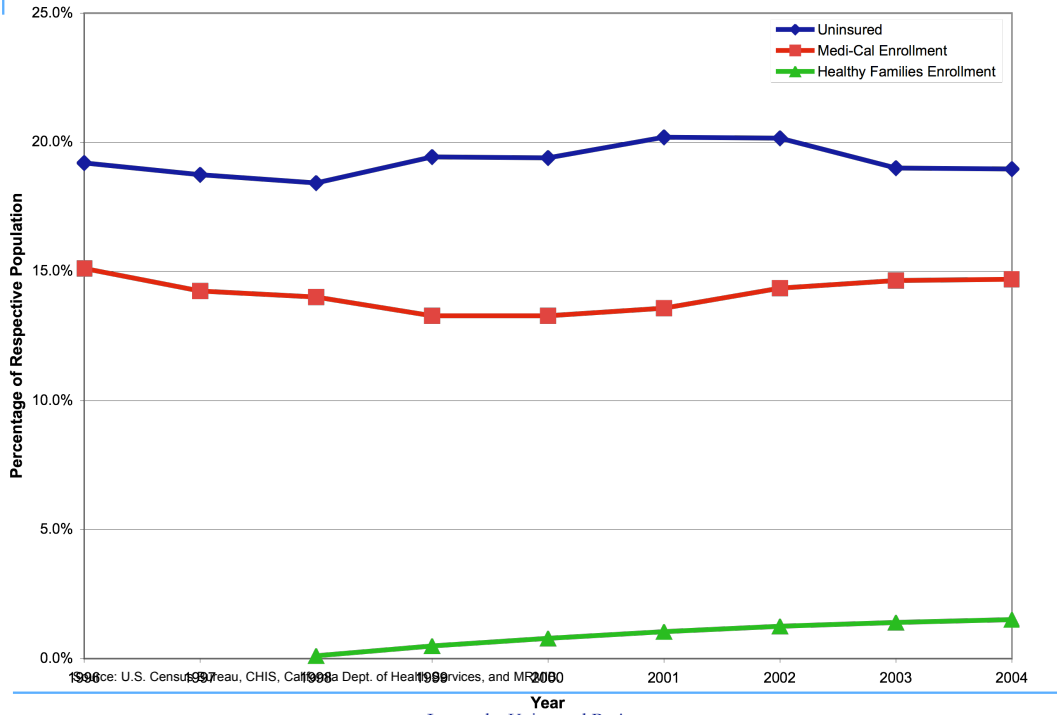
North Central Changing Population by Ethnicity, 1996-2004



Source: U.S. Census Bureau

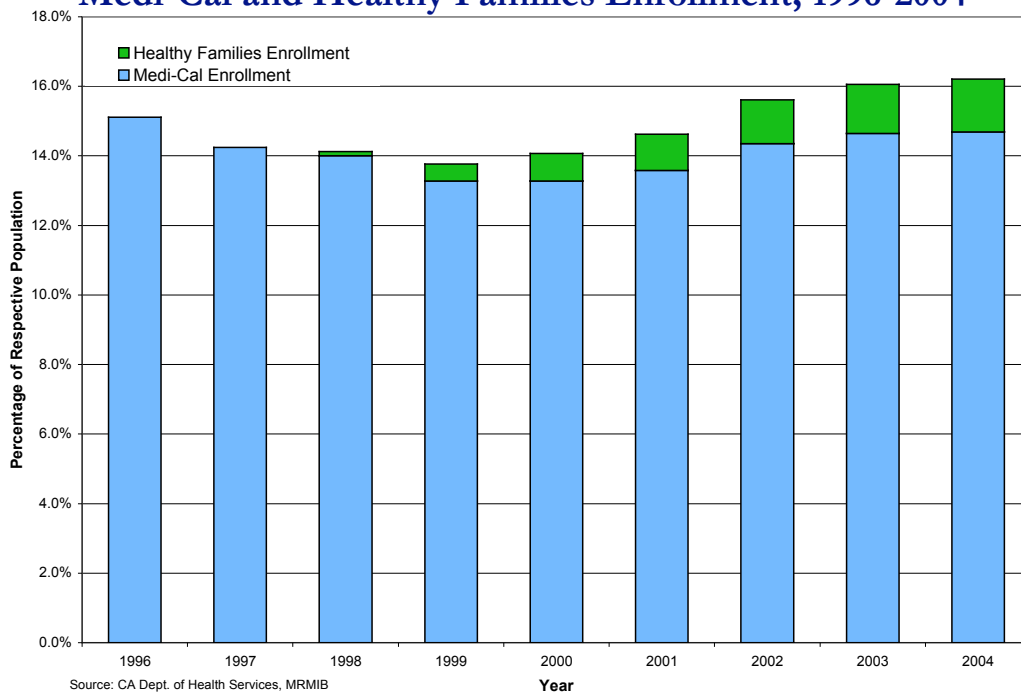
Insure the Uninsured Project
North Central Regional Overview of the Uninsured, 1996-2004

North Central Changes in Insurance Status, 1996-2004



Source: U.S. Census Bureau, CHIS, California Dept. of Health Services, and MRMB
 Insure the Uninsured Project
 North Central Regional Overview of the Uninsured, 1996-2004

Medi-Cal and Healthy Families Enrollment, 1996-2004



Source: CA Dept. of Health Services, MRMB
 Medi-Cal Enrollment as percentage of total population; Healthy Families enrollment as percentage of non-elderly population

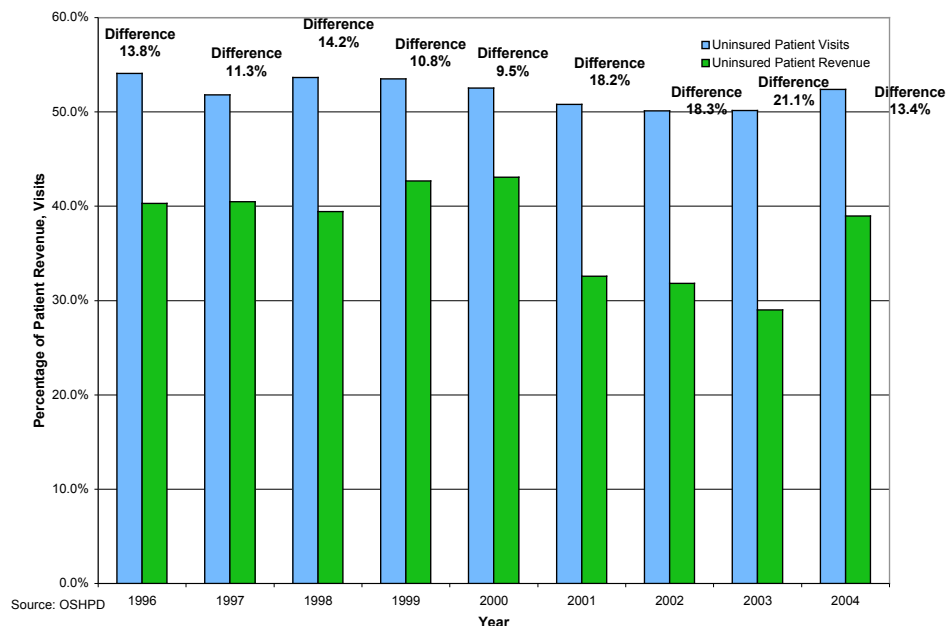
Insure the Uninsured Project
 North Central Regional Overview of the Uninsured, 1996-2004

Community Clinics

- The funding deficit for uninsured clinic visits has increased overall.
- Community clinics have operated with surpluses for the past 3 years.
- Patient fees and private reimbursement increased as a portion of clinic revenue, while federal and state grants/contracts represent a declining source of clinic revenue, and county/local reimbursements fluctuated.
- Since 1997, community clinics operated with a surplus, with the exception of 2001
- Among uninsured patient revenue, the proportion contributed by Family PACT increased while the proportion contributed by CHDP, county programs, and self-pay decreased.

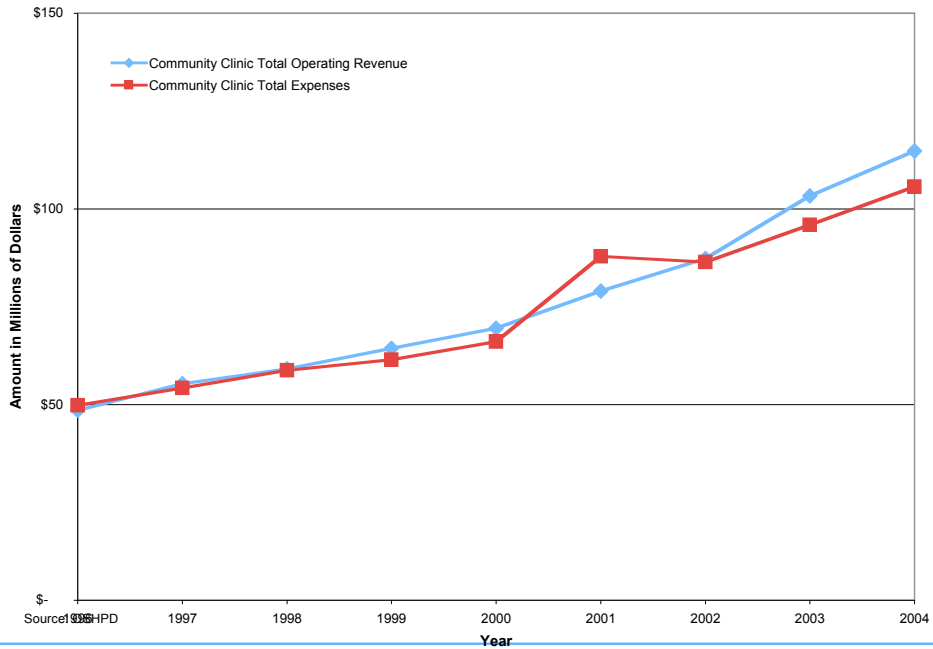
Insure the Uninsured Project
North Central Regional Overview of the Uninsured, 1996-2004

North Central Uninsured Clinic Visits and Revenue, 1996-2004



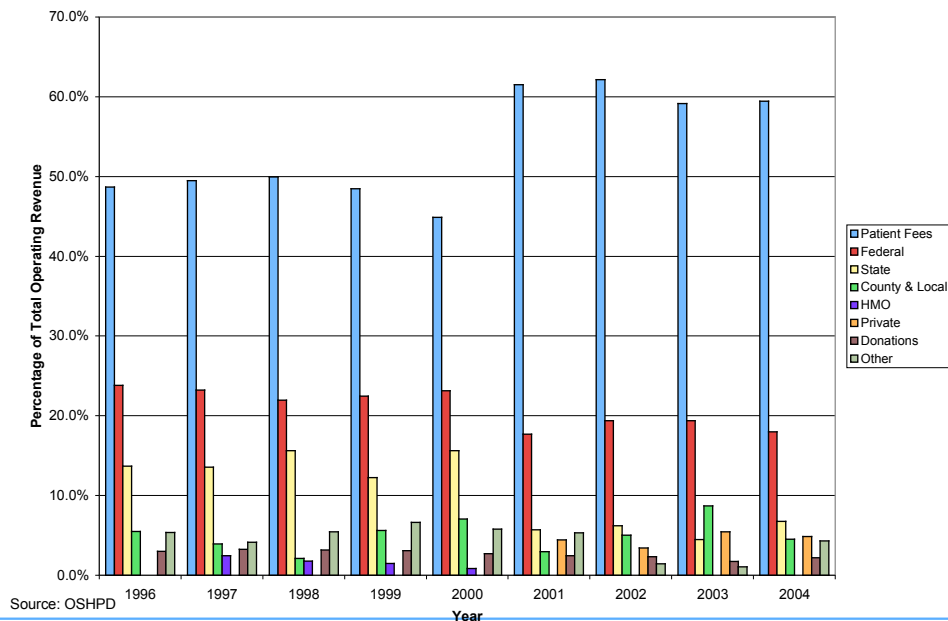
Insure the Uninsured Project
North Central Regional Overview of the Uninsured, 1996-2004

North Central Community Clinic Total Operating Revenue and Expenses, 1996-2004



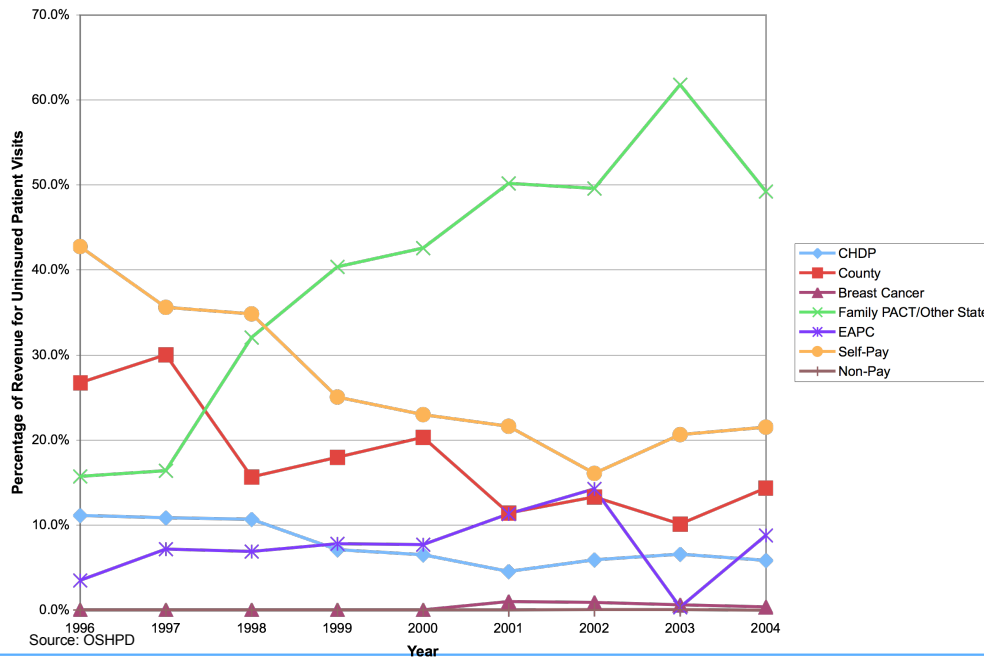
Insure the Uninsured Project
North Central Regional Overview of the Uninsured, 1996-2004

Sources of North Central Community Clinic Total Operating Revenue, 1996-2004



Insure the Uninsured Project
North Central Regional Overview of the Uninsured, 1996-2004

Changing Sources of Revenue for Uninsured Patient Visits, 1996-2004



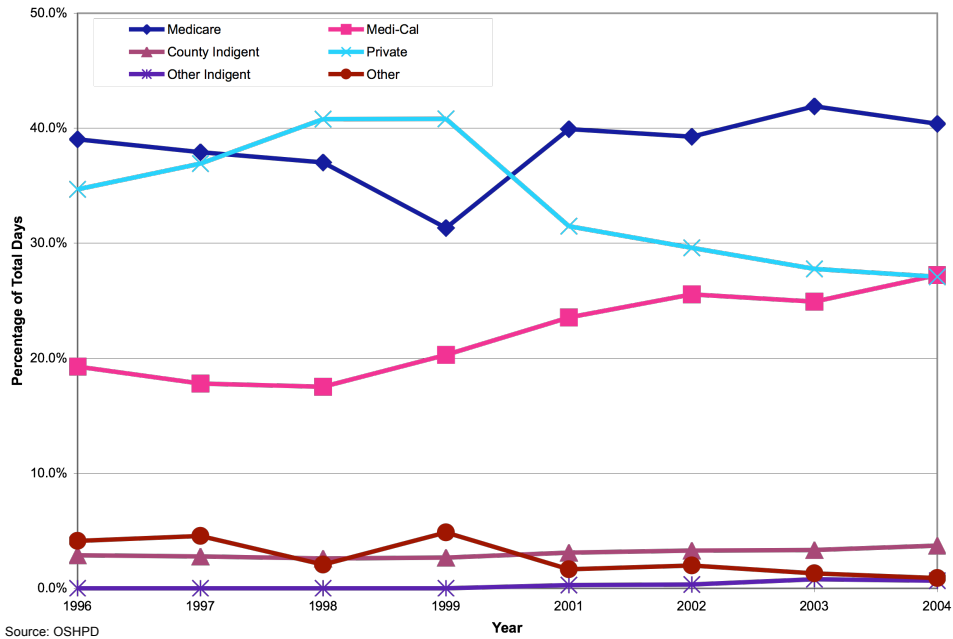
Insure the Uninsured Project
North Central Regional Overview of the Uninsured, 1996-2004

Hospitals

- The proportion of hospital inpatient days increased for Medicare and Medi-Cal patients and decreased for privately insured patients.
- The proportion of emergency department utilization among Medi-Cal patients increased and among privately insured patients declined.
- North Central hospitals have operated with a margin of over \$100 million since 2000.
- Hospital expenditures on care for the uninsured fluctuated as the proportion of county reimbursement remained relatively flat and the proportion of bad debt and charity care fluctuated.
- Since 1998, DSH growth for North Central private hospitals failed to keep pace with their cost of bad debt and charity care, with the exception of 2001. The cost of bad debt and charity care increased substantially in 2003 and 2004.
- DSH for private hospitals has grown slightly in the years since 1998.

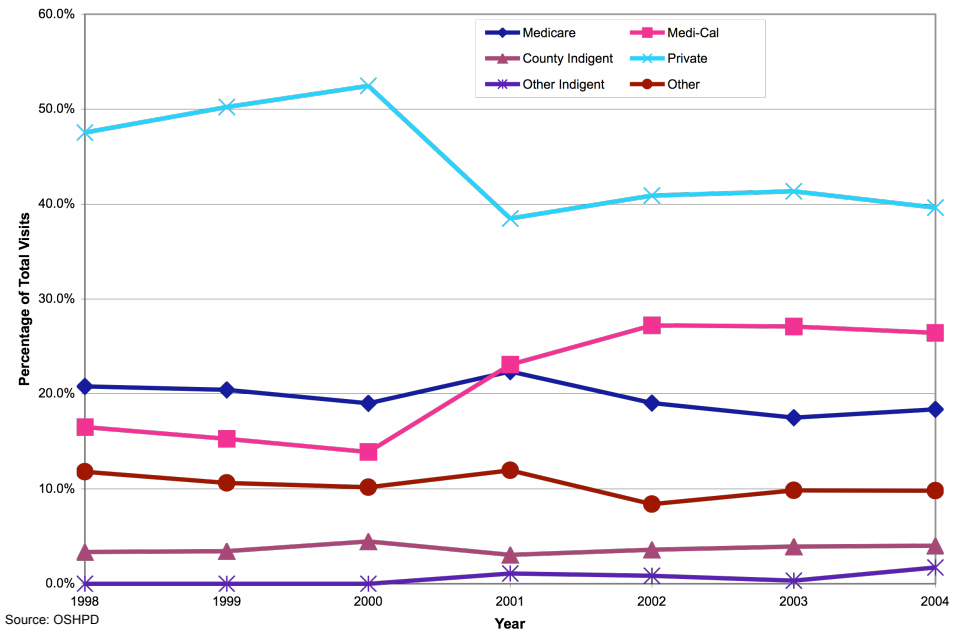
Insure the Uninsured Project
North Central Regional Overview of the Uninsured, 1996-2004

North Central Hospital Inpatient Utilization by Payer, 1996-2004



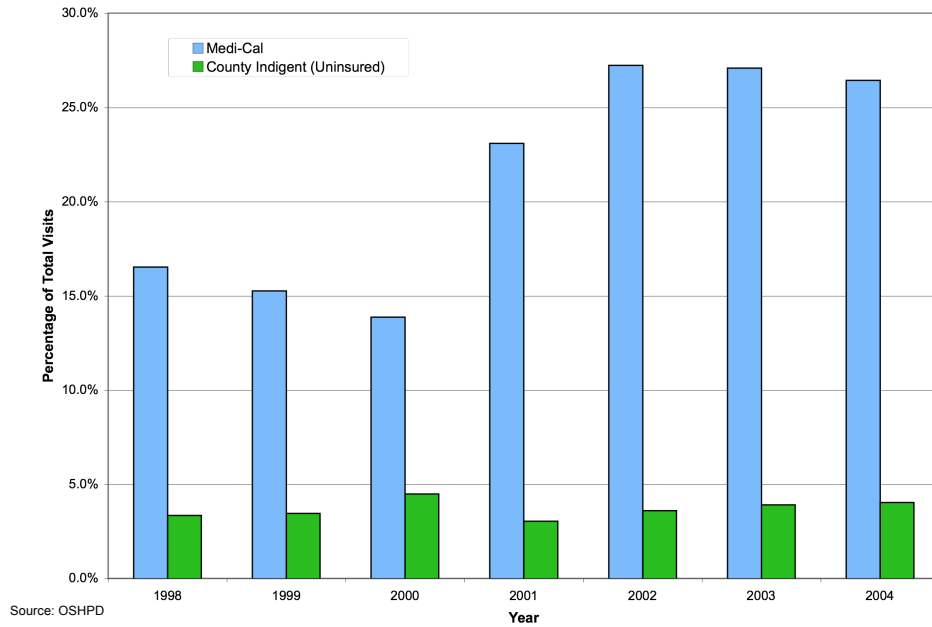
Insure the Uninsured Project
North Central Regional Overview of the Uninsured, 1996-2004

North Central Emergency Department Utilization by Payer, 1998-2004



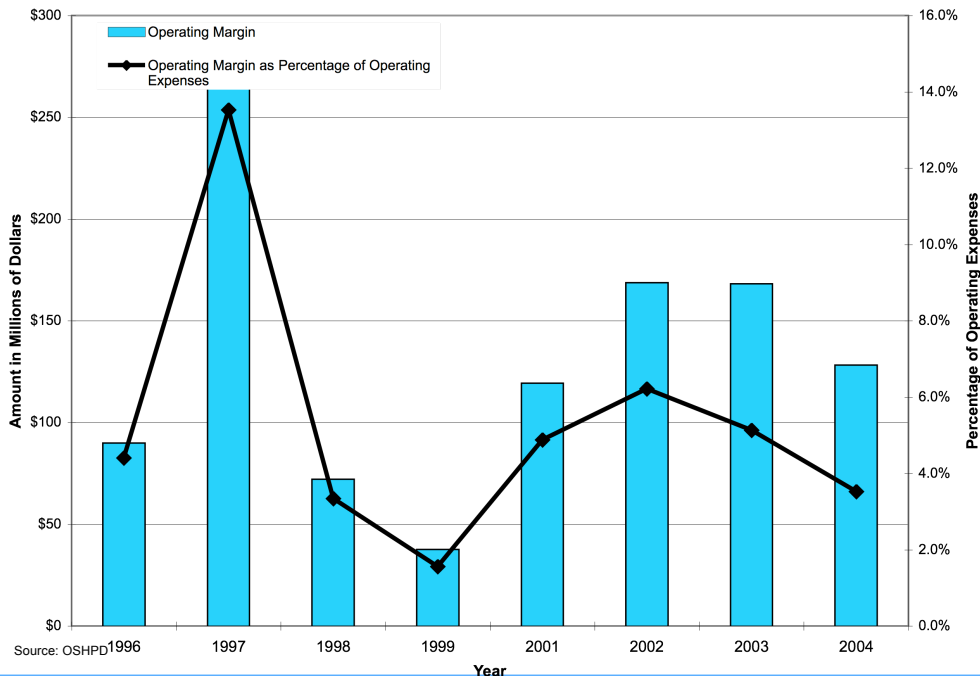
Insure the Uninsured Project
North Central Regional Overview of the Uninsured, 1996-2004

County Indigent and Medi-Cal Patient ED Utilization, 1998-2004



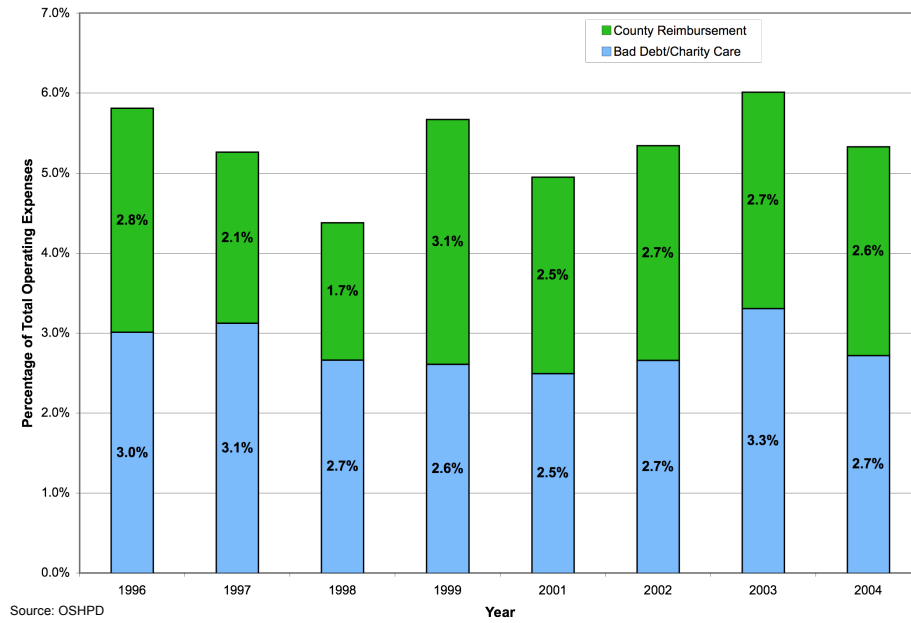
Insure the Uninsured Project
North Central Regional Overview of the Uninsured, 1996-2004

North Central Hospitals' Operating Margin, 1996-2004



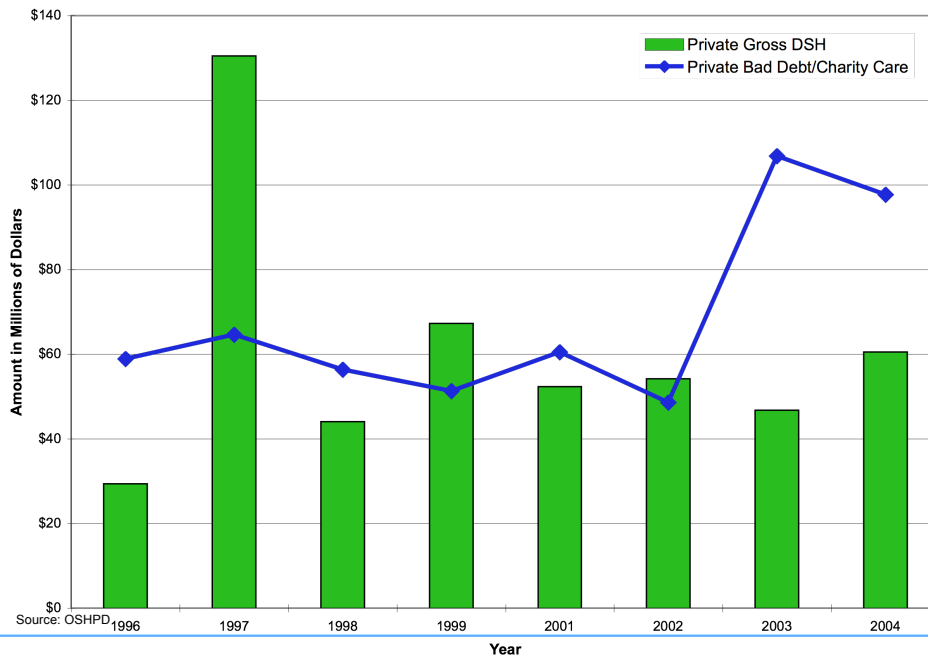
Insure the Uninsured Project
North Central Regional Overview of the Uninsured, 1996-2004

Hospital Care to the Uninsured as a Percentage of Total Hospital Expenditures, 1996-2004



Insure the Uninsured Project
North Central Regional Overview of the Uninsured, 1996-2004

DSH Disbursements and Cost of Bad Debt/Charity Care, 1996-2004



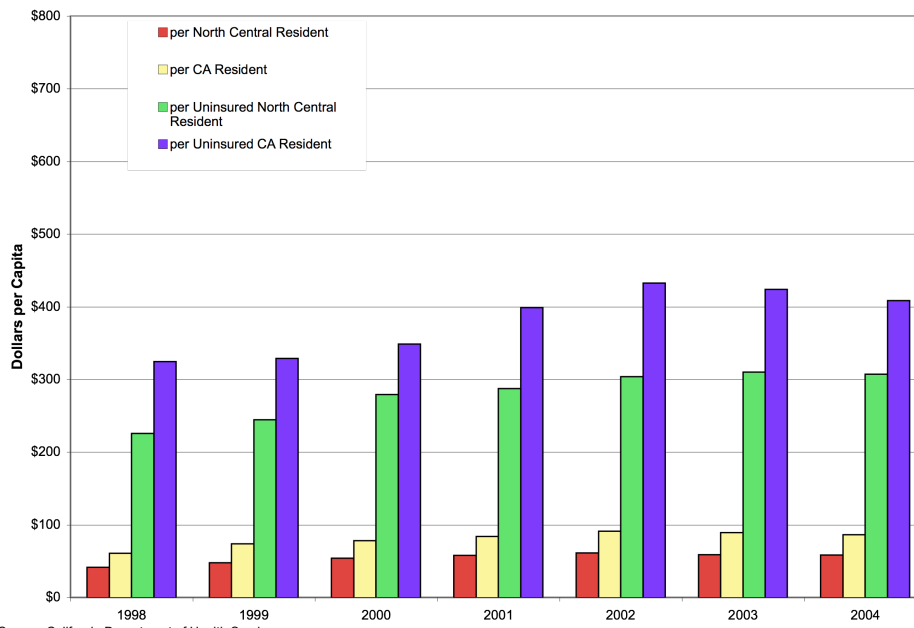
Insure the Uninsured Project
North Central Regional Overview of the Uninsured, 1996-2004

County Health

- Since 1996, county revenue per uninsured North Central resident has increased though funding equity for the region has declined.
- Overall funding equity for the North Central has declined
- Overall, the number of county indigent patients has increased, with Hispanics and Whites representing the majority of patients.
- Among the county indigent in North Central, utilization of outpatient services far exceeded utilization of inpatient services.
- County spending on all services for indigent patients nearly doubled between 1998 and 2003.

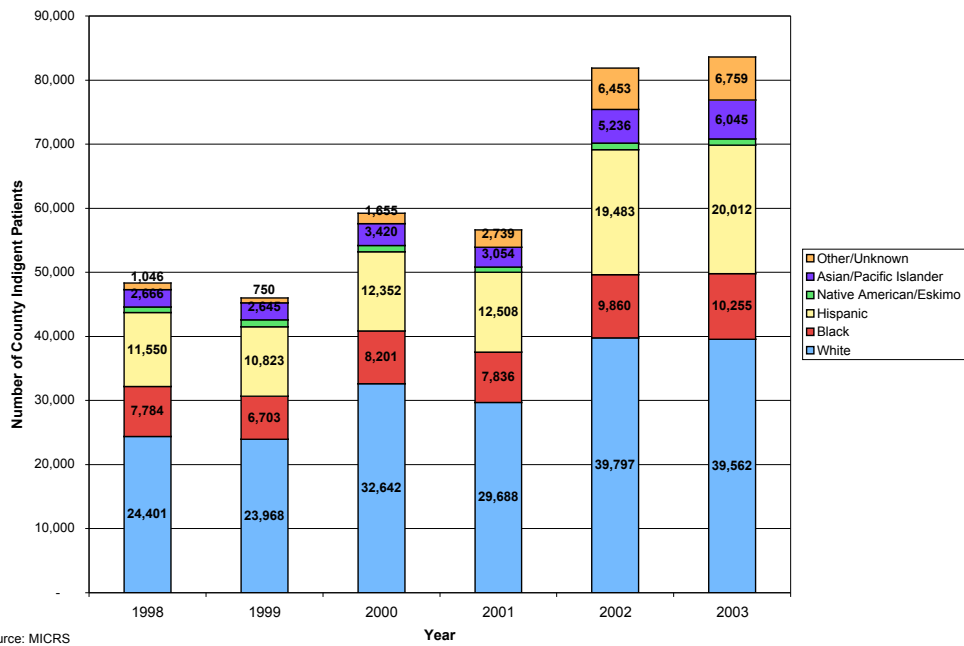
Insure the Uninsured Project
North Central Regional Overview of the Uninsured, 1996-2004

Per Capita Funding in the North Central and California, 1998-2004



Insure the Uninsured Project
North Central Regional Overview of the Uninsured, 1996-2004

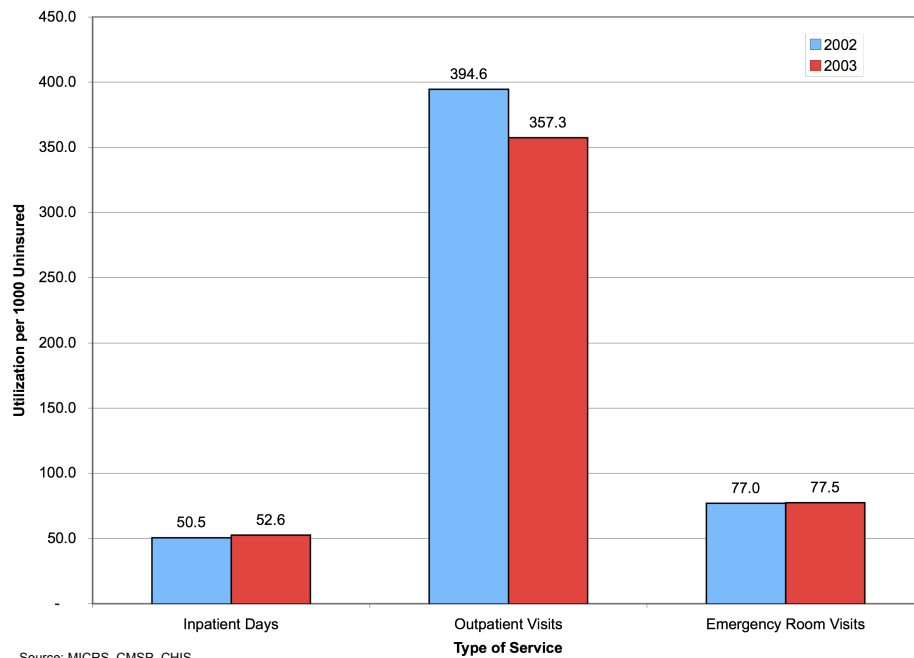
North Central Indigent Patients by Ethnicity, 1998-2003



Source: MICRS

Insure the Uninsured Project
North Central Regional Overview of the Uninsured, 1996-2004

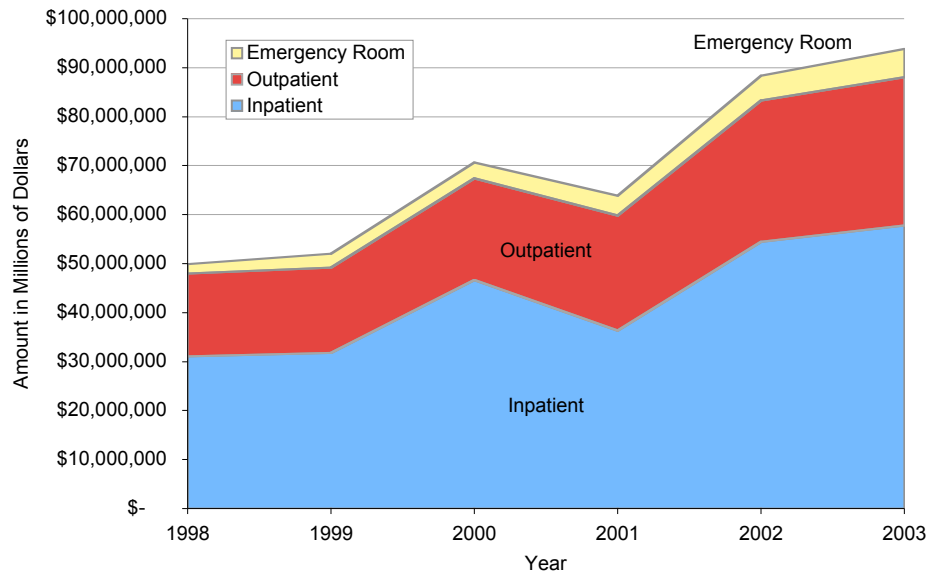
County Health Services per 1000 Uninsured, 2002-2003



Source: MICRS, CMSP, CHS

Insure the Uninsured Project
North Central Regional Overview of the Uninsured, 1996-2004

North Central County Spending by Service Type, 1998-2003



Source: MICRS, CMSP

Insure the Uninsured Project
North Central Regional Overview of the Uninsured, 1996-2004